

YALE 84 & 88 Non-Deadlocking Nightlatch

Non Deadlocking · Yale · 8 variants

PRICING

From £19.94 ex VAT

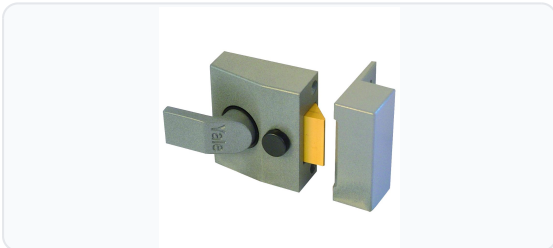
£23.93 inc VAT

8 variants available

VAT 20.00%

Range: £19.94 - £28.52 ex VAT

Product Imagery



Specification Summary

| | |
|--------------|-----------------|
| Brand | Yale |
| Product type | Non Deadlocking |

Product Description

The Yale 84 & 88 range offers a modern, non-deadlocking nightlatch solution designed for timber doors. Ideal for properties requiring convenient, reliable latching, this range features an integrated snib button that allows you to easily hold back the latchbolt when unrestricted access is needed.

A key benefit of this nightlatch is its non-handed design. The latchbolt can be easily reversed on site, making it suitable for both left and right-handed inward opening doors. Additionally, reverse strikes are available to suit outward opening doors.

This versatile nightlatch is available in multiple configurations to suit your specific installation needs. Please choose from the options below to select your preferred backset (40mm for the Yale 84 or 60mm for the Yale 88), cylinder finish (Polished Brass, Satin Chrome, or case-only with no cylinder), packaging style (Boxed or Visi), and manufacturer reference.

Technical Specifications




- **Brand:** Yale
- **Backset:** 40mm or 60mm (please choose from the options below)
- **Case Finish:** Dull Metal Grey
- **Cylinder Finish:** Polished Brass or Satin Chrome (where cylinder is included; please choose from the options below)
- **Cylinder System:** Yale 5 Pin (where cylinder is included)
- **Keying:** Keyed To Differ (with In-House Keying - KA or Special Order Keying - MK available)
- **Weight:** 600g to 890g (depending on the model selected)
- **Packaging:** Boxed or Visi (please choose from the options below)



Key Features

- **Non-Deadlocking Design:** Modern nightlatch featuring a convenient snib button to hold back the latchbolt.
- **Reversible Latchbolt:** Non-handed design with an easily reversible latchbolt for simple on-site configuration.
- **Outward Opening Compatibility:** Reverse strikes are available separately to suit outward opening doors.
- **2-Year Guarantee:** Backed by a 2-year manufacturer's guarantee for peace of mind.
- **Multiple Options:** Available in a range of backsets, cylinder finishes, and packaging types to suit your requirements (please choose below).

Variant Specifications And Pricing

| Image | Part Number | Ex VAT | Inc VAT | Attributes / Specs |
|---|-------------|--------|---------|---|
|  | 2594 | £27.37 | £32.84 | Backset: 60mm Barcode: 5010608808804 Brand: Yale Case Finish: Dull Metal Grey Cylinder Finish: Polished Brass Cylinder System: Yale 5 Pin Key Cutting: In-House Keyed: Keyed To Differ Keying - KA: In-House Keying - MK: Special Order Manufacturer Reference: P88 PB Pack Quantity: 1 Packaging: Visi Weight: 890g |
|  | 2631 | £25.26 | £30.31 | Backset: 40mm Barcode: 5010608908412 Brand: Yale Case Finish: Dull Metal Grey Cylinder Finish: Satin Chrome Cylinder System: Yale 5 Pin Key Cutting: In-House Keyed: Keyed To Differ Keying - KA: In-House Keying - MK: Special Order Manufacturer Reference: 84 SC Pack Quantity: 1 Packaging: Boxed Weight: 690g |
|  | 2633 | £25.26 | £30.31 | Backset: 40mm Barcode: 5010608808408 Brand: Yale Case Finish: Dull Metal Grey Cylinder Finish: Polished Brass Cylinder System: Yale 5 Pin Key Cutting: In-House Keyed: Keyed To Differ Keying - KA: In-House Keying - MK: Special Order Manufacturer Reference: P84 PB Pack Quantity: 1 Packaging: Visi Weight: 750g |

| Image | Part Number | Ex VAT | Inc VAT | Attributes / Specs |
|---|-------------|--------|---------|---|
|  | 297 | £27.37 | £32.84 | Backset: 60mm Barcode: 5010608908818 Brand: Yale Case Finish: Dull Metal Grey Cylinder Finish: Satin Chrome Cylinder System: Yale 5 Pin Key Cutting: In-House Keyed: Keyed To Differ Keying - KA: In-House Keying - MK: Special Order Manufacturer Reference: 88 SC Pack Quantity: 1 Packaging: Boxed Weight: 850g |
|  | 4475 | £19.94 | £23.93 | Backset: 60mm Barcode: 5010608558686 Brand: Yale Case Finish: Dull Metal Grey Keying - MK: Special Order Manufacturer Reference: 88 Pack Quantity: 1 Packaging: Boxed Weight: 690g |
|  | 8126 | £28.52 | £34.22 | Backset: 40mm Barcode: 5010608558662 Brand: Yale Case Finish: Dull Metal Grey Keying - MK: Special Order Manufacturer Reference: 84 Pack Quantity: 1 Packaging: Boxed Weight: 600g |

| Image | Part Number | Ex VAT | Inc VAT | Attributes / Specs |
|---|-------------|--------|---------|--|
|  | 9022 | £27.37 | £32.84 | <p>Backset: 60mm Barcode: 5010608908801 Brand: Yale Case Finish: Dull Metal Grey Cylinder Finish: Polished Brass Cylinder System: Yale 5 Pin Key Cutting: In-House Keyed: Keyed To Differ Keying - KA: In-House Keying - MK: Special Order Manufacturer Reference: 88 PB Pack Quantity: 1 Packaging: Boxed Weight: 810g</p> |
|  | 9089 | £25.26 | £30.31 | <p>Backset: 40mm Barcode: 5010608908405 Brand: Yale Case Finish: Dull Metal Grey Cylinder Finish: Polished Brass Cylinder System: Yale 5 Pin Key Cutting: In-House Keyed: Keyed To Differ Keying - KA: In-House Keying - MK: Special Order Manufacturer Reference: 84 PB Pack Quantity: 1 Packaging: Boxed Weight: 710g</p> |

Brand Profile

Yale



Yale is one of the most recognisable names in locks and home security — the kind of brand that’s become so default it’s basically a synonym for “lock” in a lot of people’s heads. The story starts with **Linus Yale** and the invention/development of the **pin-tumbler** concept that underpins a huge chunk of modern lock design, then scales into mass manufacturing and global distribution through the industrial era.

Today, Yale sits in an interesting split-brain reality:

- **Outside the US & Canada, Yale is an ASSA ABLOY brand**, and Yale’s own regional “About” pages explicitly state the brand was purchased by ASSA ABLOY in **August 2000**.
- **In the US & Canada**, the **Yale and August** brands were sold off as part of antitrust remedies tied to ASSA ABLOY’s Spectrum acquisition; Reuters and The Verge both describe Yale being retained by ASSA ABLOY outside North America, while the US/Canada Yale brand moved to **Fortune Brands Innovations**.

Product-wise, Yale spans the whole spectrum from **classic mechanical cylinders and door hardware** through to **smart locks and connected access** under the Yale Home umbrella. A key modern milestone was ASSA ABLOY’s acquisition of **August Home** (completed in **December 2017**), which fed into the broader “smart access” push around app-based entry and connected ecosystems.