

# UNION JL22OVS StrongBOLT Oval Sashcase

Cylinder - Oval · Union · 4 variants

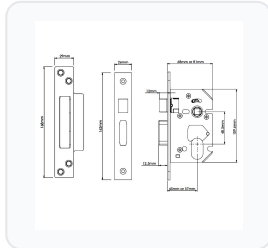
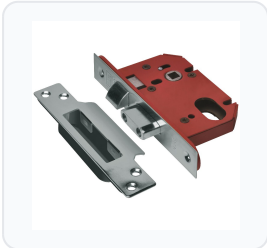
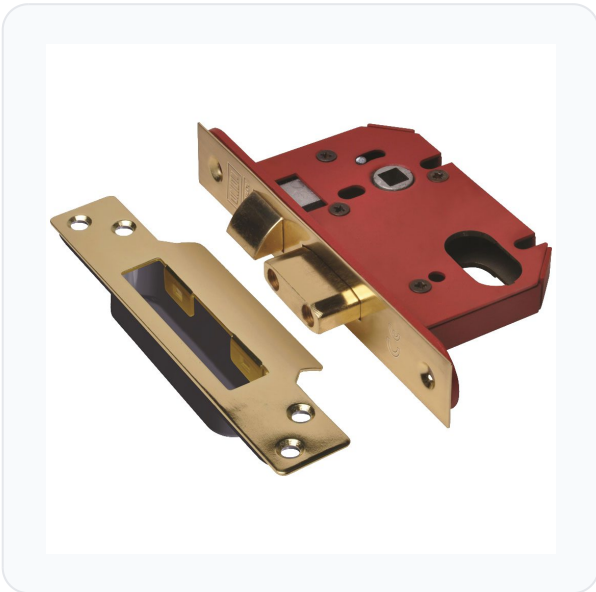
**PRICING**

**From £37.52 ex VAT**

£45.02 inc VAT

4 variants available  
VAT 20.00%

**Product Imagery**



**Specification Summary**

Brand	Union
Product type	Cylinder - Oval

## Product Description

The UNION JL22OVS StrongBOLT Oval Sashcase is a high-security mortice sashlock designed for use with an oval profile cylinder. Built with the renowned StrongBOLT™ design, it features a unique chamfered deadbolt that provides superior resistance against side load and physical attacks, including drilling, sawing, and picking.

This sashcase is highly versatile and easy to install, featuring a square faceplate combined with a radius inner forend that fits easily into standard UK mortices. It utilizes UNION's innovative SwitchLatch™ technology for a quick and easy reversible radius latch, making it suitable for both left and right-handed doors. It also comes complete with an anti-rattle adjustable strike for precise onsite fine-tuning and a plastic splinter guard to ensure a clean, professional finish.

Approved for use on 60-minute timber fire doors, this lock is CE marked, Certifire approved, and Secured by Design accredited. It is available in multiple backsets, case depths, and finishes - including Polished Brass and Stainless Steel. Please choose your required options from the selection below.

## Technical Specifications

- **Mechanism:** Oval Cylinder (cylinder not included)
- **Backset:** 45mm or 57mm (please select from the options below)
- **Case Depth:** 68mm or 81mm (please select from the options below)
- **Case Height:** 109.6mm
- **Centres:** 47.5mm
- **Bolt Throw:** 14mm
- **Spindle:** 8mm
- **Forend Dimensions:** 162mm (L) x 26mm (W)
- **Finish:** Polished Brass or Stainless Steel (please select from the options below)
- **Fire Tested:** 1-hour timber doors (BS EN 1634-1)
- **Standards:** BS EN 12209:2003, CE Marked, Certifire Approved, Secured by Design
- **Guarantee:** 10 Year

## Key Features

- **Enhanced Security:** Chamfered deadbolt design increases resistance against side load and drilling attacks.
- **Attack Resistant:** Highly resistant to picking, sawing, and force.
- **SwitchLatch™ Technology:** Easy reversible radius latch allows for quick handing adjustments on-site.
- **Simple Installation:** Features a square faceplate and radius inner forend for easy fitting or retrofitting.
- **Professional Finish:** Supplied with a plastic splinter guard and an anti-rattle adjustable strike for fine-tuning.
- **Fire Door Approved:** Certified for use on 60-minute timber fire doors.
- **Multiple Options:** Available in a choice of backsets, case depths, and finishes to suit your door requirements.

## Variant Specifications And Pricing

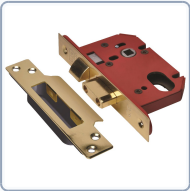
Image	Part Number	Ex VAT	Inc VAT	Attributes / Specs
	L19782	£37.52	£45.02	<p> <b>Backset:</b> 45mm  <b>Barcode:</b> 5011802175556  <b>Bolt Throw:</b> 14mm  <b>Boxed Quantity:</b> 10  <b>Brand:</b> Union  <b>Case Depth:</b> 68mm  <b>Case Height:</b> 109.6mm  <b>Centres:</b> 47.5mm  <b>Finish:</b> Polished Brass  <b>Fire Tested:</b> 1 Hour Timber  <b>Forend Finish:</b> Polished Brass  <b>Forend Length:</b> 162mm  <b>Forend Width:</b> 26mm  <b>Guarantee:</b> 10 Year  <b>Handed:</b> Reversible  <b>Manufacturer Reference:</b> JL22OVS-PB-2.5  <b>Mechanism:</b> Oval Cylinder  <b>Pack Quantity:</b> 1  <b>Packaging:</b> Boxed  <b>Spindle:</b> 8mm  <b>Standards:</b> BS EN 12209:2003, Secured by Design, BS EN 1634-1, CE Marked, Certifire  <b>Weight:</b> 615g         </p>

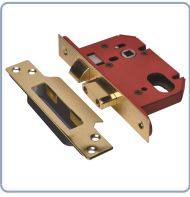
Image	Part Number	Ex VAT	Inc VAT	Attributes / Specs
	L19783	£37.52	£45.02	<p> <b>Backset:</b> 57mm  <b>Barcode:</b> 5011802175563  <b>Bolt Throw:</b> 14mm  <b>Boxed Quantity:</b> 10  <b>Brand:</b> Union  <b>Case Depth:</b> 81mm  <b>Case Height:</b> 109.6mm  <b>Centres:</b> 47.5mm  <b>Finish:</b> Polished Brass  <b>Fire Tested:</b> 1 Hour Timber  <b>Forend Finish:</b> Polished Brass  <b>Forend Length:</b> 162mm  <b>Forend Width:</b> 26mm  <b>Guarantee:</b> 10 Year  <b>Handed:</b> Reversible  <b>Manufacturer Reference:</b> JL22OVS-PB-3.0  <b>Mechanism:</b> Oval Cylinder  <b>Pack Quantity:</b> 1  <b>Packaging:</b> Boxed  <b>Spindle:</b> 8mm  <b>Standards:</b> BS EN 12209:2003, Secured by Design, BS EN 1634-1, CE Marked, Certifire  <b>Weight:</b> 705g         </p>

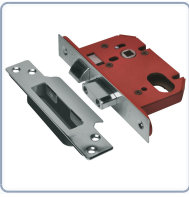
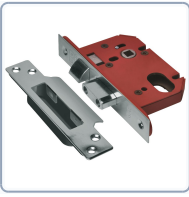
Image	Part Number	Ex VAT	Inc VAT	Attributes / Specs
	L19784	£37.52	£45.02	<p> <b>Backset:</b> 45mm  <b>Barcode:</b> 5011802175570  <b>Bolt Throw:</b> 14mm  <b>Boxed Quantity:</b> 10  <b>Brand:</b> Union  <b>Case Depth:</b> 68mm  <b>Case Height:</b> 109.6mm  <b>Centres:</b> 47.5mm  <b>Finish:</b> Stainless Steel  <b>Fire Tested:</b> 1 Hour Timber  <b>Forend Finish:</b> Stainless Steel  <b>Forend Length:</b> 162mm  <b>Forend Width:</b> 26mm  <b>Guarantee:</b> 10 Year  <b>Handed:</b> Reversible  <b>Manufacturer Reference:</b> JL22OVS-SS-2.5  <b>Mechanism:</b> Oval Cylinder  <b>Pack Quantity:</b> 1  <b>Packaging:</b> Boxed  <b>Spindle:</b> 8mm  <b>Standards:</b> BS EN 12209:2003, Secured by Design, BS EN 1634-1, CE Marked, Certifire  <b>Weight:</b> 615g         </p>

Image	Part Number	Ex VAT	Inc VAT	Attributes / Specs
	L19785	£37.52	£45.02	<p> <b>Backset:</b> 57mm  <b>Barcode:</b> 5011802175587  <b>Bolt Throw:</b> 14mm  <b>Boxed Quantity:</b> 10  <b>Brand:</b> Union  <b>Case Depth:</b> 81mm  <b>Case Height:</b> 109.6mm  <b>Centres:</b> 47.5mm  <b>Finish:</b> Stainless Steel  <b>Fire Tested:</b> 1 Hour Timber  <b>Forend Finish:</b> Stainless Steel  <b>Forend Length:</b> 162mm  <b>Forend Width:</b> 26mm  <b>Guarantee:</b> 10 Year  <b>Handed:</b> Reversible  <b>Manufacturer Reference:</b> JL22OVS-SS-3.0  <b>Mechanism:</b> Oval Cylinder  <b>Pack Quantity:</b> 1  <b>Packaging:</b> Boxed  <b>Spindle:</b> 8mm  <b>Standards:</b> BS EN 12209:2003, Secured by Design, BS EN 1634-1, CE Marked, Certifire  <b>Weight:</b> 705g         </p>

## Brand Profile

Union



**ASSA ABLOY**

**UNION** is one of the big heritage names in **British-designed locks and door hardware**, with roots going back to **1840** in **Willenhall** (aka the Black Country's lockmaking mothership). What started as a family business grew into a widely specified brand for everything that "goes on a door," and UNION still leans hard into that *made-for-the-trade, won't-let-you-down* identity.

Today, UNION sits inside **ASSA ABLOY Opening Solutions UK & Ireland**, and the brand acts like a hub for a wider family of door-hardware ranges. In recent years, brands like **Exidor** (panic/exit hardware), plus **Dale Hardware** and **Excel Architectural Hardware**, were brought into the broader "UNION family" after ASSA ABLOY acquisitions. It's basically the Avengers, but instead of saving the universe they just make sure fire exits actually work at 3am.

### What UNION is known for:

- A huge spread of **locks and cylinders** (mortice locks, euro cylinders, padlocks, etc.)
- The broader architectural hardware ecosystem: **door controls, exit hardware, hinges, handles, accessories**, and spec/support tooling aimed at installers and ironmongers
- A strong UK trade presence and long distributor relationships (Aldridge even called out a **60-year partnership** publicly).