

SQUIRE GA6 Sold Secure Motorcycle Diamond Heavy Duty Ground Anchor

Ground Anchor · Squire · 1 variant

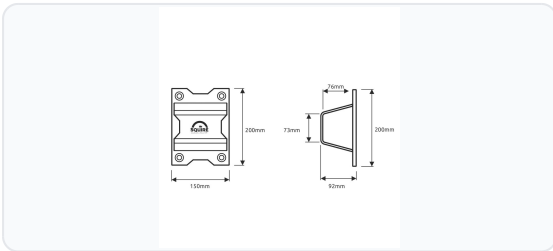
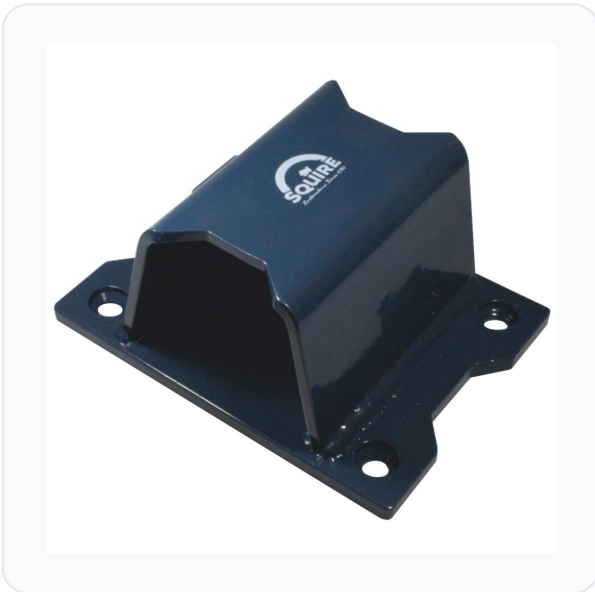
PRICING

From £160.35 ex VAT

£192.42 inc VAT

1 variant available
VAT 20.00%

Product Imagery



Specification Summary

Brand	Squire
Product type	Ground Anchor

Product Description

The Squire GA6 Heavy Duty Ground Anchor provides ultimate security for your high-value assets at home. Achieving the prestigious Sold Secure Motorcycle Diamond approval, this robust anchor is designed to withstand severe, prolonged attacks from a variety of heavy-duty tools, making it the ideal choice for garages, sheds, and outbuildings.

Manufactured from 6mm case-hardened steel with a weather-resistant blue powder-coated finish, the GA6 is built for both internal and external applications. Its versatile design allows it to be securely bolted to either concrete floors

or brick walls. The generous aperture is designed to accommodate heavy-duty security chains up to 22mm in diameter, allowing you to easily secure motorcycles, bicycles, or garden machinery.

Installation is straightforward, with the anchor supplied complete with all necessary high-security fixings, including tamper-proof steel ball inserts to prevent unauthorised removal.


Technical Specifications

- **Material:** 6mm case-hardened steel
- **Finish:** Blue powder-coated
- **Width:** 150mm
- **Depth:** 200mm
- **Height:** 92mm
- **Weight:** 3.9kg
- **Standards:** Sold Secure Motorcycle Diamond, Secured by Design (SBD) approved

Key Features

- **Maximum Security Rating:** Sold Secure Motorcycle Diamond approved for exceptional resistance against destructive attacks.
- **Heavy-Duty Construction:** Made from 6mm case-hardened steel to withstand severe physical attacks.
- **Versatile Mounting:** Suitable for both wall and floor installation on concrete or brick surfaces, indoors or outdoors.
- **Large Aperture:** Accommodates heavy-duty security chains up to 22mm in diameter.
- **Tamper-Proof Fixings:** Supplied complete with high-security fixing bolts and steel ball inserts for a secure, permanent installation.
- **Weather Resistant:** Durable blue powder-coated finish protects against the elements.

Variant Specifications And Pricing

Image	Part Number	Ex VAT	Inc VAT	Attributes / Specs
	L31086	£160.35	£192.42	<p>Barcode: 5012245038330</p> <p>Brand: Squire</p> <p>Depth: 200mm</p> <p>Finish: Blue</p> <p>Height: 92mm</p> <p>Manufacturer Reference: GA6</p> <p>Material: Steel (Hardened)</p> <p>Pack Quantity: 1</p> <p>Packaging: Boxed</p> <p>Standards: Sold Secure (Diamond)</p> <p>Weight: 3.9Kg</p> <p>Width: 15cm</p>

Brand Profile

Squire



Squire (formally **Henry Squire & Sons Ltd**) is one of the UK’s oldest lockmakers — a heritage brand best known for **serious padlocks and chain security**, especially in the motorcycle, commercial, and site-security world. Squire’s own history traces the business back to **1780**, when **William Squire** began making locks in **Willenhall** (the Black Country’s lockmaking capital). They even supplied locks to the **British Army during the Napoleonic Wars**, which is a wildly specific flex that basically translates to: “we’ve been thinking about forced entry since muskets were a performance upgrade.”

Operationally, the trading entity behind the brand is **Henry Squire & Sons Limited**.

What Squire is known for

Squire’s modern identity is anchored in **high-security padlocks** and matching **hardened chains / accessories**, with the flagship line being **Stronghold®**. Their own “About” page calls out products like the **Stronghold SS100cs** as an ultra-high-security production padlock (Squire describe it as the world’s strongest production padlock — not subtle, but neither is a 1kg lump of hardened steel).

A good example of how the brand positions itself in real-world standards:

- The **Squire SS65CS Stronghold** is independently listed by **Sold Secure** with **CEN Grade 6** and a **Powered Cycle Gold** rating, alongside features like hardened components and weather resistance.