

# RONIS 32900 Flange Fix Drawer Furniture Lock

Furniture Lock · Ronis · 1 variant

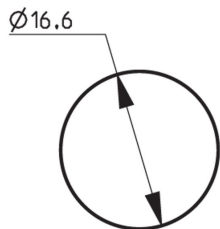
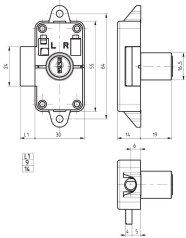
PRICING

**From £48.06 ex VAT**

£57.67 inc VAT

1 variant available  
VAT 20.00%

## Product Imagery



## Specification Summary

Brand	Ronis
Product type	Furniture Lock

## Product Description

The RONIS 32900 Flange Fix Drawer Furniture Lock is a robust and reliable locking solution designed to secure wooden drawers up to 19mm thick. Featuring a round face and a bright nickel finish, this lock is ideal for office, educational, retail, and domestic storage applications. It is supplied under the SM Master Key Series, offering up to 200 different key combinations.

Constructed from high-quality Zamak, this lock features a flange fix design with two screw fixing holes (64mm centres) to ensure a secure and stable installation. It is designed with a removable barrel, allowing the lock barrel to be easily replaced or re-keyed without needing to replace the entire lock body. The key operates with a 90-degree clockwise rotation to unlock, and for added convenience, the key can be removed in both the locked and unlocked positions.


## Technical Specifications

- **Brand:** Ronis
- **Manufacturer Reference:** 32900-9-D04-L3-SM
- **Finish:** Bright Nickel
- **Material:** Zamak
- **Body Width:** 30mm
- **Body Height:** 55mm
- **Body Depth:** 14mm
- **Nozzle/Body Diameter:** 16.5mm
- **Screw Centres:** 64mm
- **Bolt Throw:** 9mm
- **Key Series:** SM Series (up to 200 differs)
- **Keys Supplied:** 2
- **Lock Fixing:** Screw (2-hole flange)
- **Key Rotation:** 90° clockwise
- **Key Removal:** Locked and unlocked positions

## Key Features

- **Removable Barrel:** Offers maximum flexibility by allowing the lock barrel to be replaced or master-keyed without changing the lock body.
- **Secure Flange Fixing:** Features two screw location holes with 64mm centres for a stable and secure fit.
- **Versatile Operation:** Key operates 90° clockwise to unlock and can be removed in both locked and unlocked positions.
- **Durable Construction:** Made from high-quality Zamak with a bright nickel finish for long-lasting performance.
- **Drawer Compatibility:** Suitable for use on drawers up to 19mm thick.

## Variant Specifications And Pricing

Image	Part Number	Ex VAT	Inc VAT	Attributes / Specs
	L26848	£48.06	£57.67	<p><b>Barcode:</b> 5055120781488</p> <p><b>Body Depth:</b> 14mm</p> <p><b>Body Diameter:</b> 16.5mm</p> <p><b>Body Height:</b> 55mm</p> <p><b>Body Width:</b> 30mm</p> <p><b>Bolt Throw:</b> 9mm</p> <p><b>Brand:</b> Ronis</p> <p><b>Differs:</b> 200</p> <p><b>Finish:</b> Bright Nickel</p> <p><b>Fixing:</b> Screw</p> <p><b>Head Diameter:</b> 16.5mm</p> <p><b>Key Series:</b> SM</p> <p><b>Keys Supplied:</b> 2</p> <p><b>Manufacturer Reference:</b> 32900-9-D04-L3-SM</p> <p><b>Mechanism:</b> Wafer</p> <p><b>Movement:</b> 90° Clockwise</p> <p><b>Notes:</b> Cam Fixing ID - CX, Direction ID - D04, Hole Profile - 30400, Lock Fixing ID - L3 &amp; Removable Barrel</p> <p><b>Nozzle Diameter:</b> 16.5mm</p> <p><b>Pack Quantity:</b> 1</p> <p><b>Screw Centres:</b> 64mm</p> <p><b>Weight:</b> 135g</p>

## Brand Profile

Ronis



**RONIS** is an industrial locking brand best known for the unglamorous-but-essential stuff that keeps the modern world closed: **cam locks, quarter-turn locks, enclosure locks, locker/furniture locks**, and other OEM-friendly locking components used in **electrical cabinets, switchgear, lockers, vending/utility enclosures, postal equipment, and industrial furniture**. It's the kind of brand you don't notice until a whole site can't open a cabinet, and then suddenly it's the main character.

Today, **RONIS is a brand within the DOM Security group** (often referenced as **DOM RONIS**), and it's positioned as one of the major players in **industrial locks and mechanical components** for manufacturers.

What RONIS is really about is **OEM / turnkey supply**: providing manufacturers with ready-to-integrate locking solutions rather than one-off "retail" locks. DOM's own positioning for DOM RONIS is explicitly **designing, manufacturing and marketing OEM security systems for industry** and delivering **turnkey solutions**.

On the product side, the brand is heavily associated with **robust cam lock families**—e.g., models like the **RONIS 8800 / 32150 / 1710** ranges are described as cast, one-piece bodies aimed at durability and proven performance (the "this cabinet will be opened 12,000 times and nobody will lubricate it" design philosophy).