

# RONIS 23720 19.5mm Nut Fix Latchlock To Suit 7.5mm Padlock

Nut Fix · Ronis · 1 variant

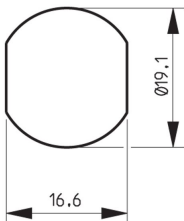
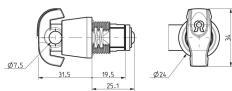
PRICING

**From £21.32 ex VAT**

£25.58 inc VAT

1 variant available  
VAT 20.00%

## Product Imagery



## Specification Summary

Brand Ronis

Product type Nut Fix

## Product Description

The RONIS 23720 is a high-quality, padlockable latchlock designed for securing lockers, cabinets, cupboards, and office furniture. This robust lock is operated using a separate padlock, making it an ideal choice for shared environments or personal storage where users supply their own padlocks.

Constructed with a round face and finished in bright nickel, the lock is both durable and visually clean. It features a 19.5mm body length and is secured in place using a reliable nut fixing method. The latchlock is designed to accept padlocks with a shackle diameter of up to 7.5mm and operates with a smooth 90° clockwise movement.


## Technical Specifications

- **Brand:** Ronis
- **Manufacturer Reference:** 23720-DS4-L2-C3
- **Body Length:** 19.5mm
- **Body Diameter:** 19.1mm
- **Body Height:** 19.1mm
- **Body Width:** 16.6mm
- **Head Diameter:** 34mm
- **Head Shape:** Round
- **Cam Height:** 30mm
- **Movement:** 90° Clockwise
- **Fixing Method:** Nut fixing
- **Finish:** Bright Nickel
- **Maximum Shackle Diameter:** 7.5mm
- **Weight:** 70g

## Key Features

- **Padlockable Design:** Designed to be secured using a separate padlock, offering flexible security options for lockers and cabinets.
- **Robust Construction:** Features a durable bright nickel finish and a sturdy round face.
- **Secure Nut Fixing:** Easy and reliable installation with a nut fixing mechanism.
- **Smooth Operation:** Features a 90° clockwise movement for straightforward locking and unlocking.

### Variant Specifications And Pricing

Image	Part Number	Ex VAT	Inc VAT	Attributes / Specs
	L26821	£21.32	£25.58	<p><b>Barcode:</b> 5055120781211</p> <p><b>Body Diameter:</b> 19.1mm</p> <p><b>Body Height:</b> 19.1mm</p> <p><b>Body Length:</b> 19.5mm</p> <p><b>Body Width:</b> 16.6mm</p> <p><b>Brand:</b> Ronis</p> <p><b>Cam Height:</b> 30mm</p> <p><b>Finish:</b> Bright Nickel</p> <p><b>Fixing:</b> Nut</p> <p><b>Head Diameter:</b> 34mm</p> <p><b>Head Shape:</b> Round</p> <p><b>Manufacturer Reference:</b> 23720-DS4-L2-C3</p> <p><b>Movement:</b> 90° Clockwise</p> <p><b>Notes:</b> Cam Fixing ID - C3, Direction ID - DS4, Hole Profile - 10800 &amp; Lock Fixing ID - L2</p> <p><b>Pack Quantity:</b> 1</p> <p><b>Shackle Diameter:</b> 7.5mm</p> <p><b>Weight:</b> 70g</p>

## Brand Profile

Ronis



**RONIS** is an industrial locking brand best known for the unglamorous-but-essential stuff that keeps the modern world closed: **cam locks, quarter-turn locks, enclosure locks, locker/furniture locks**, and other OEM-friendly locking components used in **electrical cabinets, switchgear, lockers, vending/utility enclosures, postal equipment, and industrial furniture**. It's the kind of brand you don't notice until a whole site can't open a cabinet, and then suddenly it's the main character.

Today, **RONIS is a brand within the DOM Security group** (often referenced as **DOM RONIS**), and it's positioned as one of the major players in **industrial locks and mechanical components** for manufacturers.

What RONIS is really about is **OEM / turnkey supply**: providing manufacturers with ready-to-integrate locking solutions rather than one-off "retail" locks. DOM's own positioning for DOM RONIS is explicitly **designing, manufacturing and marketing OEM security systems for industry** and delivering **turnkey solutions**.

On the product side, the brand is heavily associated with **robust cam lock families**—e.g., models like the **RONIS 8800 / 32150 / 1710** ranges are described as cast, one-piece bodies aimed at durability and proven performance (the "this cabinet will be opened 12,000 times and nobody will lubricate it" design philosophy).