

RONIS 22520 19.5mm Nut Fix Latchlock To Suit 7.6mm Padlock

Nut Fix · Ronis · 1 variant

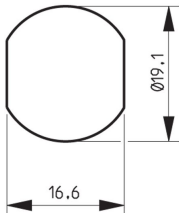
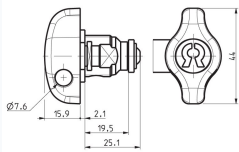
PRICING

From £13.79 ex VAT

£16.55 inc VAT

1 variant available
VAT 20.00%

Product Imagery



Specification Summary

Brand Ronis

Product type Nut Fix

Product Description

The RONIS 22520 is a high-quality, padlockable latchlock designed for secure cabinet, locker, and personal storage applications. Supplied in a bright nickel-plated finish, this robust latchlock features a round face and is secured in place with a reliable nut fixing.

This latchlock is designed to work in conjunction with a padlock, allowing users to secure their own lockers or compartments with their personal padlock. It accepts padlocks with a shackle diameter of up to 7.6mm. Operating with a 90° clockwise movement, it provides a simple yet highly effective locking solution for offices, schools, leisure centres, and industrial environments.


Technical Specifications

- **Brand:** Ronis
- **Manufacturer Reference:** 22520-DS4-L2-C3
- **Body Length:** 19.5mm
- **Body Diameter:** 19mm
- **Body Height:** 19.1mm
- **Body Width:** 16.6mm
- **Head Diameter:** 44mm
- **Cam Height:** 30mm
- **Finish:** Nickel Plated
- **Fixing Type:** Nut Fix
- **Movement:** 90° Clockwise
- **Maximum Shackle Diameter:** 7.6mm
- **Weight:** 70g

Key Features

- **Padlockable Design:** Designed to accept padlocks with shackles up to 7.6mm, giving users the flexibility to use their own padlocks.
- **Durable Finish:** Supplied in a bright nickel-plated finish for enhanced corrosion resistance and a clean, professional look.
- **Secure Nut Fixing:** Features a robust nut fixing mechanism for a stable and secure installation.
- **Smooth Operation:** Operates with a reliable 90° clockwise rotation to lock and unlock.
- **Versatile Application:** Ideal for securing lockers, cabinets, and other personal storage units in commercial, educational, or leisure environments.

Variant Specifications And Pricing

Image	Part Number	Ex VAT	Inc VAT	Attributes / Specs
	L26819	£13.79	£16.55	<p> Barcode: 5055120781198 Body Diameter: 19mm Body Height: 19.1mm Body Length: 19.5mm Body Width: 16.6mm Brand: Ronis Cam Height: 30mm Finish: Nickel Plated Fixing: Nut Head Diameter: 44mm Manufacturer Reference: 22520-DS4-L2-C3 Movement: 90° Clockwise Notes: Lock Fixing ID - L2, Hole Profile - 10500, Direction ID - DS4 & Cam Fixing ID - C3. Pack Quantity: 1 Shackle Diameter: 7.6mm Weight: 70g </p>

Brand Profile

Ronis



RONIS is an industrial locking brand best known for the unglamorous-but-essential stuff that keeps the modern world closed: **cam locks, quarter-turn locks, enclosure locks, locker/furniture locks**, and other OEM-friendly locking components used in **electrical cabinets, switchgear, lockers, vending/utility enclosures, postal equipment, and industrial furniture**. It's the kind of brand you don't notice until a whole site can't open a cabinet, and then suddenly it's the main character.

Today, **RONIS is a brand within the DOM Security group** (often referenced as **DOM RONIS**), and it's positioned as one of the major players in **industrial locks and mechanical components** for manufacturers.

What RONIS is really about is **OEM / turnkey supply**: providing manufacturers with ready-to-integrate locking solutions rather than one-off "retail" locks. DOM's own positioning for DOM RONIS is explicitly **designing, manufacturing and marketing OEM security systems for industry** and delivering **turnkey solutions**.

On the product side, the brand is heavily associated with **robust cam lock families**—e.g., models like the **RONIS 8800 / 32150 / 1710** ranges are described as cast, one-piece bodies aimed at durability and proven performance (the "this cabinet will be opened 12,000 times and nobody will lubricate it" design philosophy).