

RONIS 14200 Nut Fix Master Keyed Camlock

Nut Fix · Ronis · 1 variant

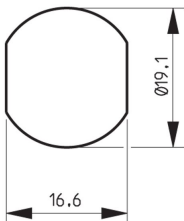
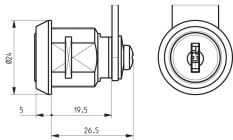
PRICING

From £24.06 ex VAT

£28.87 inc VAT

1 variant available
VAT 20.00%

Product Imagery



Specification Summary

Brand Ronis

Product type Nut Fix

Product Description

The RONIS 14200 Nut Fix Master Keyed Camlock is a highly reliable and robust locking solution, ideal for securing lockers, cabinets, metal furniture, and letterboxes. Utilising a secure wafer mechanism, this camlock is supplied under the popular CC Master Key Series, making it an excellent choice for commercial environments such as schools, offices, and leisure facilities where master key access is required.

Constructed with a durable body and finished in bright chrome, the lock features a round face and is designed for a secure nut fixing. It operates with a smooth 90° clockwise movement and offers up to 2,000 key combinations (differs) to ensure dependable security. Each lock is supplied with two keys as standard.

With a compact 19.5mm body length and 19.1mm body diameter, this camlock is straightforward to install and provides a clean, professional finish. It is stocked as a master-keyed unit, allowing for seamless integration into your security setup.

Technical Specifications

- **Brand:** Ronis
- **Manufacturer Reference:** 14200-D02-L2-C2-CC
- **Body Length:** 19.5mm
- **Body Diameter:** 19.1mm
- **Body Width:** 16.1mm
- **Body Height:** 19.1mm
- **Head Diameter:** 24mm
- **Head Shape:** Round
- **Cam Height:** 31mm
- **Finish:** Bright Chrome
- **Fixing:** Nut
- **Mechanism:** Wafer
- **Movement:** 90° Clockwise
- **Key Series:** CC
- **Keyed:** Master Keyed
- **Key Combinations (Differs):** 2,000
- **Keys Supplied:** 2
- **Pack Quantity:** 1

Key Features

- **Master Key Compatible:** Supplied under the CC Master Key Series, making it ideal for multi-user commercial environments.
- **Robust Wafer Mechanism:** Provides dependable security with up to 2,000 key combinations.
- **Secure Nut Fixing:** Designed for straightforward and stable installation on lockers and cabinets.
- **Bright Chrome Finish:** Offers a clean, professional look with excellent durability.
- **90° Clockwise Operation:** Smooth and simple movement for quick and easy access.
- **Complete Package:** Supplied with two keys as standard.

Variant Specifications And Pricing

Image	Part Number	Ex VAT	Inc VAT	Attributes / Specs
	L26813	£24.06	£28.87	<p>Barcode: 5055120781136</p> <p>Body Diameter: 19.1mm</p> <p>Body Height: 19.1mm</p> <p>Body Length: 19.5mm</p> <p>Body Width: 16.1mm</p> <p>Brand: Ronis</p> <p>Cam Height: 31mm</p> <p>Differs: 2,000</p> <p>Finish: Bright Chrome</p> <p>Fixing: Nut</p> <p>Head Diameter: 24mm</p> <p>Head Shape: Round</p> <p>Key Series: CC</p> <p>Keyed: Master Keyed</p> <p>Keying - MK: Stocked</p> <p>Keys Supplied: 2</p> <p>Manufacturer Reference: 14200-D02-L2-C2-CC</p> <p>Mechanism: Wafer</p> <p>Movement: 90° Clockwise</p> <p>Notes: Master Keyed - CC With Lock Fixing ID - L2, Hole Profile - 10800, Direction ID - D02 & Cam Fixing ID - C2.</p> <p>Pack Quantity: 1</p> <p>Weight: 60g</p>

Brand Profile

Ronis



RONIS is an industrial locking brand best known for the unglamorous-but-essential stuff that keeps the modern world closed: **cam locks, quarter-turn locks, enclosure locks, locker/furniture locks**, and other OEM-friendly locking components used in **electrical cabinets, switchgear, lockers, vending/utility enclosures, postal equipment, and industrial furniture**. It's the kind of brand you don't notice until a whole site can't open a cabinet, and then suddenly it's the main character.

Today, **RONIS is a brand within the DOM Security group** (often referenced as **DOM RONIS**), and it's positioned as one of the major players in **industrial locks and mechanical components** for manufacturers.

What RONIS is really about is **OEM / turnkey supply**: providing manufacturers with ready-to-integrate locking solutions rather than one-off "retail" locks. DOM's own positioning for DOM RONIS is explicitly **designing, manufacturing and marketing OEM security systems for industry** and delivering **turnkey solutions**.

On the product side, the brand is heavily associated with **robust cam lock families**—e.g., models like the **RONIS 8800 / 32150 / 1710** ranges are described as cast, one-piece bodies aimed at durability and proven performance (the "this cabinet will be opened 12,000 times and nobody will lubricate it" design philosophy).