

RONIS 12900 Snap Fix Master Keyed Camlock

Snap Fix · Ronis · 1 variant

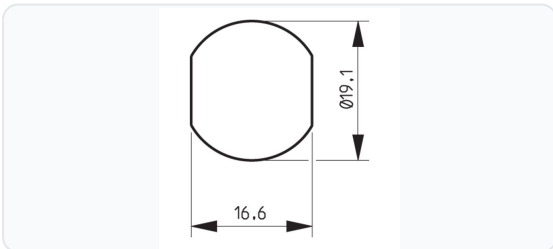
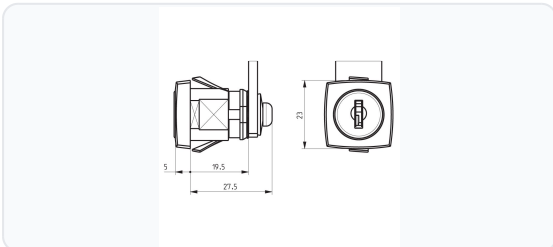
PRICING

From £24.06 ex VAT

£28.87 inc VAT

1 variant available
VAT 20.00%

Product Imagery



Specification Summary

| | |
|--------------|----------|
| Brand | Ronis |
| Product type | Snap Fix |

Product Description

The RONIS 12900 Snap Fix Master Keyed Camlock is a robust and efficient locking solution designed for applications such as metal office furniture, lockers, letterboxes, and retail storage. Featuring a convenient snap-in clip fixing, this camlock can be installed quickly and securely without the need for additional fixing tools or nuts, saving valuable installation time.

Constructed with a durable wafer mechanism, this camlock provides reliable security and is supplied under the popular CC Master Key Series. It offers up to 2,000 key combinations (differs) and comes complete with two keys. The lock features a square face with a 19.5mm body length and is finished in a clean, professional bright nickel. With a flexible 180° clockwise and anti-clockwise key movement, it ensures smooth and versatile operation for a wide range of cupboard and cabinet doors.


Technical Specifications

- **Brand:** Ronis
- **Body Length:** 19.5mm
- **Body Diameter:** 19.1mm
- **Body Height:** 19.1mm
- **Body Width:** 16.1mm
- **Head Diameter:** 23mm
- **Head Shape:** Square
- **Cam Height:** 31mm
- **Mechanism:** Wafer
- **Key Series:** CC
- **Keyed:** Master Keyed
- **Key Movement:** 180° Clockwise & Anti-Clockwise
- **Keys Supplied:** 2
- **Finish:** Bright Nickel
- **Fixing Type:** Snap-in Clip

Key Features

- **Quick Snap-In Installation:** Designed with a snap-in clip fixing for fast, tool-free mounting.
- **Master Keyed Compatibility:** Supplied under the CC Master Key Series, making it easy to integrate into master key systems.
- **Reliable Wafer Mechanism:** Offers dependable security with up to 2,000 key combinations.
- **Versatile Operation:** Features 180° clockwise and anti-clockwise movement to suit various cabinet configurations.
- **Durable Finish:** Finished in bright nickel for a clean, professional look and long-lasting durability.
- **Complete Package:** Supplied with two keys as standard.

Variant Specifications And Pricing

| Image | Part Number | Ex VAT | Inc VAT | Attributes / Specs |
|---|-------------|--------|---------|--|
|  | L26814 | £24.06 | £28.87 | <p>Barcode: 5055120781143</p> <p>Body Diameter: 19.1mm</p> <p>Body Height: 19.1mm</p> <p>Body Length: 19.5mm</p> <p>Body Width: 16.1mm</p> <p>Brand: Ronis</p> <p>Cam Height: 31mm</p> <p>Differs: 2,000</p> <p>Finish: Bright Nickel</p> <p>Fixing: Snap</p> <p>Head Diameter: 23mm</p> <p>Head Shape: Square</p> <p>Key Series: CC</p> <p>Keyed: Master Keyed</p> <p>Keying - MK: Stocked</p> <p>Keys Supplied: 2</p> <p>Manufacturer Reference: 12900-D01-L5-C2-CC</p> <p>Mechanism: Wafer</p> <p>Movement: 180° Clockwise & Anti Clockwise</p> <p>Notes: Master Keyed - "CC" With Lock Fixing ID - L5, Hole Profile - 10800, Direction ID - D01 & Cam Fixing ID - C2.</p> <p>Pack Quantity: 1</p> <p>Weight: 60g</p> |

Brand Profile

Ronis



RONIS is an industrial locking brand best known for the unglamorous-but-essential stuff that keeps the modern world closed: **cam locks, quarter-turn locks, enclosure locks, locker/furniture locks**, and other OEM-friendly locking components used in **electrical cabinets, switchgear, lockers, vending/utility enclosures, postal equipment, and industrial furniture**. It's the kind of brand you don't notice until a whole site can't open a cabinet, and then suddenly it's the main character.

Today, **RONIS is a brand within the DOM Security group** (often referenced as **DOM RONIS**), and it's positioned as one of the major players in **industrial locks and mechanical components** for manufacturers.

What RONIS is really about is **OEM / turnkey supply**: providing manufacturers with ready-to-integrate locking solutions rather than one-off "retail" locks. DOM's own positioning for DOM RONIS is explicitly **designing, manufacturing and marketing OEM security systems for industry** and delivering **turnkey solutions**.

On the product side, the brand is heavily associated with **robust cam lock families**—e.g., models like the **RONIS 8800 / 32150 / 1710** ranges are described as cast, one-piece bodies aimed at durability and proven performance (the "this cabinet will be opened 12,000 times and nobody will lubricate it" design philosophy).