

PAXTON Proximity Long Range Reader 313-110 Switch2 / Net2

Switch2 & Net2 · Paxton · 1 variant

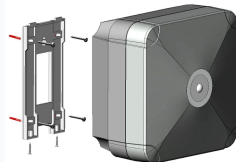
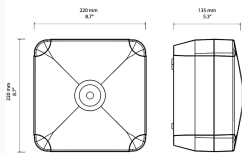
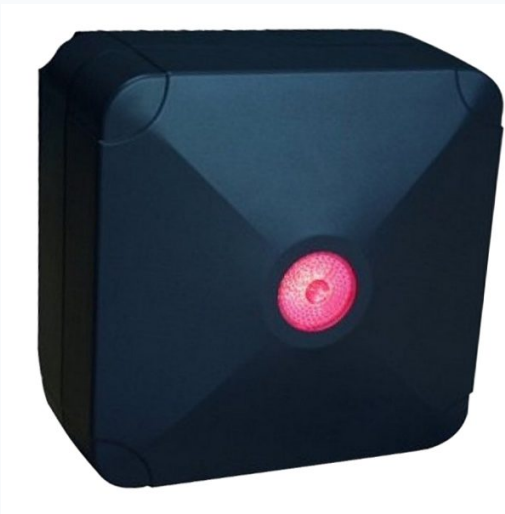
PRICING

From £459.00 ex VAT

£550.80 inc VAT

1 variant available
VAT 20.00%

Product Imagery



Specification Summary

| | |
|--------------|----------------|
| Brand | Paxton |
| Product type | Switch2 & Net2 |

Product Description

The Paxton Proximity Long Range Reader (313-110) is a highly efficient, hands-free access control solution designed primarily for vehicle and car park access points. With a generous read range of up to 5 metres when used with hands-free tokens, it allows drivers to gain access from inside their car or van, ensuring a smooth and convenient entry process.

A key benefit of this reader is its built-in hands-free interface, which eliminates the need to install expensive ground loops during setup. It is also highly versatile, functioning as a standard close-proximity reader so that users with standard Paxton tokens or key fobs can still gain access at normal ranges.

Built to withstand the elements, the reader features a robust, IPX7-rated weather-resistant casing. It provides clear, immediate feedback to users via a high-visibility LED display (shining green for authorised access and red for denied) alongside an audible alert tone. It is fully compatible with both Paxton Switch2 and Net2 control units, making it an ideal addition to your existing security network.


Technical Specifications

- **Brand:** Paxton
- **Manufacturer Reference:** 313-110
- **Compatibility:** Switch2 and Net2 control units
- **Read Range:** Up to 5m (with hands-free tokens)
- **Input Voltage:** 12V DC
- **Current Consumption:** 1A (Power consumption: 1.1A)
- **IP Rating:** IPX7 (Weather resistant)
- **Operating Temperature:** -35°C to +66°C
- **Dimensions:** 220mm (W) x 135mm (D)
- **Weight:** 2.155kg
- **Connection Type:** Terminals
- **Fitting:** Surface mounted

Key Features

- **Long-Range Detection:** Offers a read range of up to 5 metres with hands-free tokens, perfect for vehicle access.
- **No Ground Loops Required:** Built-in hands-free interface removes the need to lay ground loops during installation.
- **Dual-Functionality:** Works as both a long-range hands-free reader and a standard close-proximity reader for standard tokens.
- **Clear Visual & Audible Feedback:** Features a bright LED display (red/green) visible in sunlight, accompanied by an audible alert tone.
- **Weatherproof Design:** IPX7-rated durable black casing designed to operate reliably in harsh outdoor environments.
- **Seamless Integration:** Designed for use with existing, unmodified Switch2 or Net2 control systems.

Variant Specifications And Pricing

| Image | Part Number | Ex VAT | Inc VAT | Attributes / Specs |
|---|-------------|---------|---------|--|
|  | L27519 | £459.00 | £550.80 | <p>Audible Indication: Yes Barcode: 5055169505229 Brand: Paxton Connections: Terminals Controller Required: Yes - Switch2 / Net2 Current Consumption: 1A Depth: 135mm Finish: Black Fitting: Surface Format: Proximity Input Voltage: 12V DC IP Rating: IPX7 Manufacturer Reference: 313-110 Operating Temperature: -35°C to 66°C Pack Quantity: 1 Packaging: Boxed Power Consumption: 1.1A Read Range: 5M Max With Hands Free Tokens Stand Alone Or Networked: Both (Switch2 & Net2) Suits Product: Net2 and Switch2 Visual Indication: Yes Weather Resistant: Yes Weight: 2.155Kg Width: 22cm</p> |

Brand Profile

Paxton



Paxton is a UK **access control** manufacturer based in **Brighton**, best known for making “security made simple” systems that sit in the sweet spot between **installer-friendly** and **properly scalable**. They design and manufacture their own kit (controllers, readers, credentials, door entry, wireless door handles), and their systems are used to secure **~30,000 buildings each year** across **60+ export countries**.

The company’s roots go back to the mid-80s: **Paxton Access Limited** was incorporated on **22 January 1985**, and the brand points to early products like the **TOUCHLOCK keypad** as part of the origin story that grew into today’s access-control portfolio.

Product-wise, Paxton is mainly known for:

- **Net2** – their networked access control system, centrally administered from one or more PCs and built to scale across multiple doors/sites.
- **Paxton10** – their more modern platform alongside Net2, positioned as a step up in capability (and where they’re pushing higher-security credential tech).
- Plus simpler options like **Standalone / Switch2** for smaller jobs where you want the door secured without turning the install into a networking saga.