

Mul-T-Lock NE14 Closed Shackle Padlock

Mul-T-Lock Padlocks NE/NG Range · Multlock · 1 variant

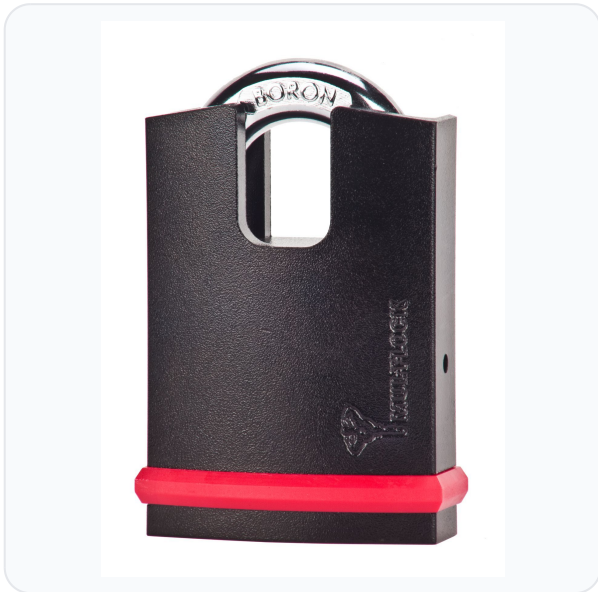
PRICING

From £115.00 ex VAT

£138.00 inc VAT

1 variant available
VAT 20.00%

Product Imagery



Specification Summary

Brand	Multlock
Product type	Mul-T-Lock Padlocks NE/NG Range
Keyway	MTL Padlocks NE/G

Product Description

The Mul-T-Lock NE14 Closed Shackle Padlock is an ultra-high-security locking solution designed to withstand the most aggressive physical attacks. Certified to the highest standards with a prestigious CEN Grade 6 rating and Sold Secure Diamond approval, this padlock is ideal for securing high-value commercial assets, perimeter gates, and heavy-duty applications.

At its core is the patented MTL300 key platform, which utilises advanced telescopic pin technology to offer exceptional resistance against picking, bumping, and drilling. The system provides strict key copy control, requiring the supplied security card for any future key duplication.

Constructed with a robust case-hardened steel body and a 14mm hardened boron alloy steel shackle, it offers extreme resistance to cutting, sawing, and hammer attacks. The closed shackle design further protects the shackle from bolt cutters. For outdoor durability, it features a black electrophoretic finish, a protective keyway shutter to keep out dust, and drainage holes to prevent freezing. The key-retaining design ensures the padlock cannot be left unlocked accidentally.

Technical Specifications


- **CEN Rating:** Grade 6

- **Sold Secure Rating:** Diamond
- **Shackle Diameter:** 14mm
- **Shackle Material:** Hardened boron alloy steel
- **Body Material:** Case-hardened steel
- **Locking Mechanism:** Double ball bearing
- **Finish:** Black electrophoretic
- **Key Platform:** MTL300 (supplied with security card)
- **Key Retaining:** Yes

Key Features

- **Maximum Security:** Certified to CEN Grade 6 and Sold Secure Diamond for ultimate peace of mind against aggressive physical attacks.
- **Closed Shackle Protection:** The 14mm hardened boron alloy steel shackle is encased in a high-guard body, offering extreme resistance to bolt cutters and sawing.
- **Robust Construction:** Case-hardened steel body designed to resist drilling, pulling, and hammer attacks.
- **Weatherproof Design:** Features a protective keyway shutter to exclude dust, drainage holes to prevent freezing, and a corrosion-resistant black electrophoretic finish.
- **Key Retaining Security:** The key can only be removed when the padlock is fully locked, ensuring it is never left unsecured.

Variant Specifications And Pricing

Image	Part Number	Ex VAT	Inc VAT	Attributes / Specs
	59090239	£115.00	£138.00	Manufacturer Reference: NE14 CS - CEN 6

Brand Profile

Multlock



Mul-T-Lock (sometimes typed “Multlock”) is an Israeli high-security locking brand best known for **high-security cylinders, patented key systems, and mechanical + electromechanical access solutions** aimed at locksmiths, institutions, and commercial sites where key control and attack resistance actually matter.

- **Founded: 1973** in Israel (Mul-T-Lock states “founded in Israel in 1973”).
- **Ownership: Fully owned by ASSA ABLOY**; ASSA ABLOY completed the acquisition on **31 Jan 2000** (consolidated from 1 Feb 2000).

What it’s known for (the “why you’d stock it” bit)

- **High-security mechanical cylinders & keys** with strong key-control stories (patented platforms, restricted profiles, etc.).
- **Electromechanical upgrades** (turning “just a cylinder” into managed access) alongside classic mechanical master-keying for bigger sites.
- A big “locksmith channel” identity: Mul-T-Lock explicitly positions itself as a **locksmiths’ preferred partner**, with authorised centres and support tooling.

Tiny lore nugget

Their early growth story is tied to a “multi-directional / four-way” locking concept that helped launch the brand internationally, and later expansion into more advanced cylinder platforms.