

Mul-T-Lock NE12 Closed Shackle Padlock

Mul-T-Lock Padlocks NE/NG Range · Multlock · 1 variant

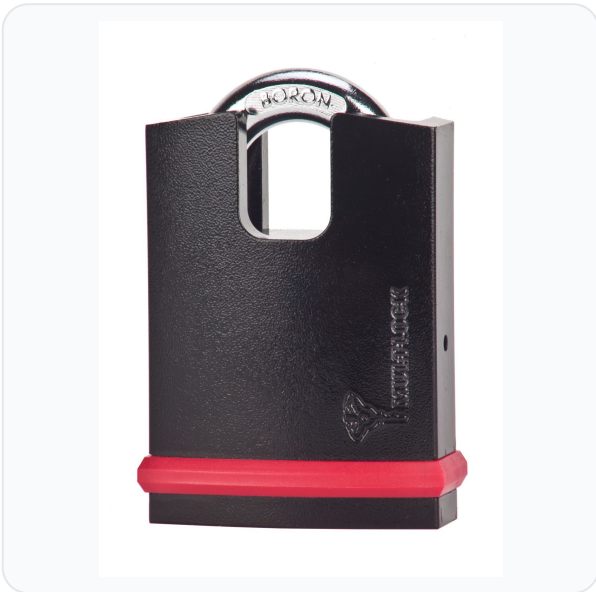
PRICING

From £101.00 ex VAT

£121.20 inc VAT

1 variant available
VAT 20.00%

Product Imagery



Specification Summary

Brand	Multlock
Product type	Mul-T-Lock Padlocks NE/NG Range
Keyway	MTL Padlocks NE/G

Product Description

The **Mul-T-Lock NE12 Closed Shackle Padlock** is a premium, high-security locking solution engineered to protect high-value assets in both commercial and domestic environments. With a **CEN Grade 5** rating and **Sold Secure Gold** approval, this heavy-duty padlock is built to withstand aggressive physical attacks and extreme outdoor conditions.

Maximum Attack Resistance

The padlock features a closed shackle design that fully shields the **12mm hardened boron alloy steel shackle**, leaving virtually no exposure for bolt cutters, saws, or prying tools. Its robust body is constructed from case-hardened steel and utilises a highly secure double ball bearing locking mechanism, offering exceptional resistance against pulling and drilling.

Built for the Elements

Designed to perform in the harshest environments, the NE12 is finished with a black electrophoretic coating for superior corrosion resistance. It also includes integrated drainage holes to prevent freezing in winter, alongside a protective shutter to keep dust and debris out of the cylinder.


Technical Specifications

- **CEN Grade:** Grade 5
- **Sold Secure Rating:** Gold
- **Shackle Diameter:** 12mm
- **Shackle Material:** Hardened boron alloy steel
- **Body Material:** Case-hardened steel
- **Locking Mechanism:** Double ball bearing
- **Finish:** Black electrophoretic coating
- **Key Retention:** Key retaining (key remains trapped when open)

Key Features

- **CEN Grade 5 & Sold Secure Gold:** Certified high-security protection for ultimate peace of mind.
- **Closed Shackle Design:** Encloses the 12mm boron alloy shackle to prevent cutting, cropping, and sawing attacks.
- **Weatherproof Construction:** Corrosion-resistant finish, drainage holes, and a protective keyway shutter protect against harsh environments.
- **Key Retaining:** The key remains trapped in the cylinder when open, ensuring the padlock cannot be left unlocked by accident.
- **Drill & Pull Resistance:** Robust case-hardened steel body with a secure double ball bearing locking mechanism.

Variant Specifications And Pricing

Image	Part Number	Ex VAT	Inc VAT	Attributes / Specs
	59090231	£101.00	£121.20	Manufacturer Reference: NE12 CS - CEN 5

Brand Profile

Multlock



Mul-T-Lock (sometimes typed “Multlock”) is an Israeli high-security locking brand best known for **high-security cylinders, patented key systems, and mechanical + electromechanical access solutions** aimed at locksmiths, institutions, and commercial sites where key control and attack resistance actually matter.

- **Founded: 1973** in Israel (Mul-T-Lock states “founded in Israel in 1973”).
- **Ownership: Fully owned by ASSA ABLOY**; ASSA ABLOY completed the acquisition on **31 Jan 2000** (consolidated from 1 Feb 2000).

What it’s known for (the “why you’d stock it” bit)

- **High-security mechanical cylinders & keys** with strong key-control stories (patented platforms, restricted profiles, etc.).
- **Electromechanical upgrades** (turning “just a cylinder” into managed access) alongside classic mechanical master-keying for bigger sites.
- A big “locksmith channel” identity: Mul-T-Lock explicitly positions itself as a **locksmiths’ preferred partner**, with authorised centres and support tooling.

Tiny lore nugget

Their early growth story is tied to a “multi-directional / four-way” locking concept that helped launch the brand internationally, and later expansion into more advanced cylinder platforms.