

LATHAM'S Aluminium Welding Bullet Hinge

Bullet · Lathams Steel Doors · 4 variants

PRICING

From £4.25 ex VAT

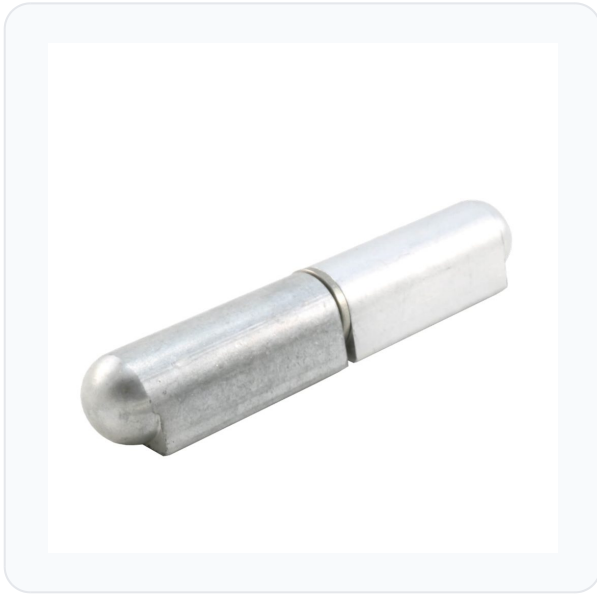
£5.10 inc VAT

4 variants available

VAT 20.00%

Range: £4.25 - £12.31 ex VAT

Product Imagery



Specification Summary

Brand Lathams Steel Doors

Product type Bullet

Product Description

The Latham's Aluminium Welding Bullet Hinges are high-quality, lightweight, and corrosion-resistant hinges designed for a wide variety of fabrication projects. Constructed from premium aluminium, they are supplied complete with a durable Grade 304 stainless steel pin and stainless steel washer to ensure smooth, reliable operation.

These versatile weld-on hinges are ideal for securing metal doors, gates, cabinets, and enclosures. The smaller sizes are perfect for lightweight domestic projects, while the larger sizes are robust enough to handle demanding industrial applications.

These hinges are available in a range of lengths, diameters, and weights to suit your specific installation requirements. Please select your preferred size and specification from the options below.

Technical Specifications

- **Brand:** Lathams Steel Doors
- **Material:** Aluminium
- **Pin Material:** Grade 304 Stainless Steel

- **Washer Material:** Stainless Steel
- **Diameter:** 10mm, 13mm, or 16mm (please choose from the options below)
- **Length:** 60mm, 80mm, 10cm, or 12cm (please choose from the options below)
- **Weight:** Range from 18g to 85g (please choose from the options below)
- **Finish:** Aluminium
- **Pack Quantity:** 1
- **Manufacturer Reference:** AFSSP-060, AFSSP-080, AFSSP-0100, or AFSSP-0120 (please choose from the options below)
- **Barcode:** Multiple options available (please choose from the options below)

Key Features

- **Corrosion Resistant:** Built to withstand outdoor elements and harsh environments.
- **Lightweight Construction:** Aluminium body offers an excellent strength-to-weight ratio.
- **Smooth Operation:** Supplied with a Grade 304 stainless steel pin and washer for reliable, low-friction movement.
- **Versatile Applications:** Small hinges are ideal for lightweight projects, while larger hinges are perfect for industrial use.
- **Weld-On Design:** Provides a permanent and discreet hinge solution for metal fabrication.

Variant Specifications And Pricing

Image	Part Number	Ex VAT	Inc VAT	Attributes / Specs
	L30877	£4.25	£5.10	Barcode: 5056240114040 Brand: Lathams Steel Doors Diameter: 10mm Finish: Aluminium Length: 60mm Manufacturer Reference: AFSSP-060 Material: Aluminium Pack Quantity: 1 Packaging: Loose Weight: 18g
	L30878	£7.69	£9.23	Barcode: 5056240114057 Brand: Lathams Steel Doors Diameter: 13mm Finish: Aluminium Length: 80mm Manufacturer Reference: AFSSP-080 Material: Aluminium Pack Quantity: 1 Packaging: Loose Weight: 38g
	L30879	£10.77	£12.92	Barcode: 5056240114064 Brand: Lathams Steel Doors Diameter: 16mm Finish: Aluminium Length: 10cm Manufacturer Reference: AFSSP-0100 Material: Aluminium Pack Quantity: 1 Packaging: Loose Weight: 74g
	L30880	£12.31	£14.77	Barcode: 5056240114071 Brand: Lathams Steel Doors Diameter: 16mm Finish: Aluminium Length: 12cm Manufacturer Reference: AFSSP-0120 Material: Aluminium Pack Quantity: 1 Packaging: Loose Weight: 85g

Brand Profile

Lathams Steel Doors



Latham's Steel Doors (trading as **Latham's Steel Security Doorsets**) is a family-owned UK supplier of **steel security and fire-rated doors**, known for keeping a **large stock range** ready for fast dispatch and for offering **customisable steel personnel doors** for residential, commercial, and industrial use. The business is based in **Oldbury, West Midlands**, and was **established in 2011**.

They position themselves as the **UK's leading supplier of steel security doors** and emphasise being able to supply **security-rated** and **fire-rated steel doors** *from stock*, with options like different colours, glazing, louvres and access devices.

On the product identity side, Latham's is closely associated with steel "site/industrial" door setups and their branded **HOOPLY™ 19-point locking system** on key door lines (plus stocked fire exit doors often supplied pre-fitted with recognised panic/exit hardware).

They've also been publicly listed as joining/participating in the **Secured by Design** ecosystem for certified security-rated doors (useful if you're writing spec-facing copy).