

L&F 5880 Furniture Lock

Furniture Lock · Lowe & Fletcher · 2 variants

PRICING

From £16.80 ex VAT

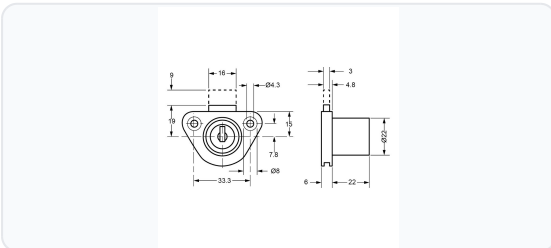
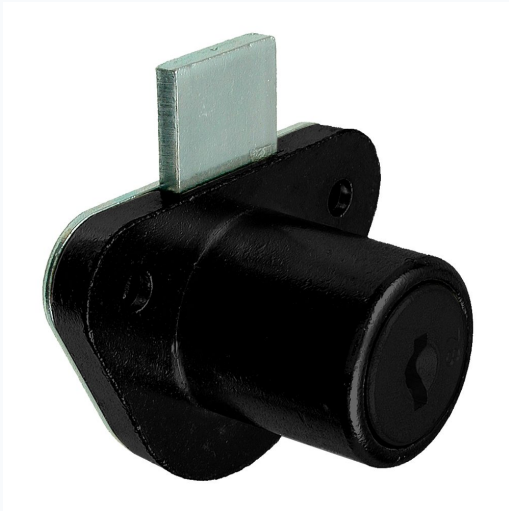
£20.16 inc VAT

2 variants available

VAT 20.00%

Range: £16.80 - £17.73 ex VAT

Product Imagery



Specification Summary

Brand Lowe & Fletcher

Product type Furniture Lock

Product Description

The Lowe & Fletcher 5880 Furniture Lock is a highly reliable rim-mounted lock designed for a wide range of wooden furniture applications. Ideal for securing office desks, pedestals, cupboards, and cabinets, this lock offers a practical and secure solution for protecting your belongings.

Operating with a 180° anti-clockwise key rotation, the lock drives a flat bolt to secure the door or drawer. For convenience, the key can be removed in both the locked and unlocked positions. It features a durable black finish that blends seamlessly with modern and traditional wooden furniture, and is designed for straightforward screw-on installation.

This lock is available in multiple keying options, including Keyed Alike (ideal for multiple locks using the same key) and Keyed To Differ (where each lock has a unique key). Please choose your preferred keying option from the selection below.

Technical Specifications

- **Brand:** Lowe & Fletcher
- **Manufacturer Reference:** 5880
- **Cylinder Diameter:** 22mm
- **Backset:** 15mm
- **Body Dimensions:** 33mm (H) x 48mm (W)
- **Body Length:** 4.8mm
- **Head Dimensions:** 22mm (W) x 22mm (H) x 22mm (D)
- **Finish:** Black
- **Fixing:** Screw fix
- **Key Series:** 18 Series
- **Locking Combinations:** 200 differs
- **Movement:** 180° Anti-Clockwise
- **Keys Supplied:** 2

Key Features

- **Versatile Application:** Specifically designed for wooden furniture, including desks, cupboards, pedestals, and cabinets
- **Multiple Keying Options:** Available in Keyed Alike and Keyed To Differ configurations (please choose from the options below)
- **Convenient Operation:** Key is removable in both the locked and unlocked positions
- **Smooth Action:** Flat bolt operated by a 180° anti-clockwise key rotation
- **Durable Finish:** Clean black finish that complements a variety of furniture styles
- **Easy Installation:** Simple screw-on fixing method

Variant Specifications And Pricing

Image	Part Number	Ex VAT	Inc VAT	Attributes / Specs
	L9433	£17.73	£21.28	<p>Backset: 15mm Barcode: 5055120605746 Body Height: 33mm Body Width: 48mm Brand: Lowe & Fletcher Cylinder Diameter: 22mm Differs: 200 Finish: Black Fixing: Screw Key Series: 18 Keyed: Keyed Alike Keying - KA: Stocked Keying - MK: Special Order Keys Supplied: 2 Manufacturer Reference: 5880 Movement: 180° Anti Clockwise Notes: Keyed Alike - 18015 Packaging: Bagged Weight: 100g</p>
	L9434	£16.80	£20.16	<p>Backset: 15mm Barcode: 5055120605739 Body Height: 33mm Body Width: 48mm Brand: Lowe & Fletcher Cylinder Diameter: 22mm Differs: 200 Finish: Black Fixing: Screw Key Series: 18 Keyed: Keyed To Differ Keying - KA: Stocked Keying - MK: Special Order Keys Supplied: 2 Manufacturer Reference: 5880 Movement: 180° Anti Clockwise Packaging: Bagged Weight: 100g</p>

Brand Profile

Lowe & Fletcher



Lowe & Fletcher is a long-established British manufacturer of **locking systems for industry**, best known for high-volume, application-specific locks like **camlocks, quarter-turns, compression locks, and electronic/keypad solutions** used on things like **enclosures, cabinets, lockers, post/parcel units, and industrial equipment**. They're a **sixth-generation, family-owned** business with roots going back to **1889**, when **John Lowe and Thomas Fletcher** founded a lockmaking firm in **Willenhall** in the Black Country—one of the historic heartlands of UK lockmaking.

Today, Lowe & Fletcher forms part of the **Lowe & Fletcher Group**, which describes two main divisions: **Locking Systems** (industrial/OEM locks) and **Fire Safety** (smoke and fire containment systems).

Operationally, their Locking Systems division includes UK operations based around the West Midlands (e.g., **Wednesbury, WS10 7DE**) and they state they have multiple operational sites across Europe and the US to serve local and specialist markets.

On the product side, their camlock range alone spans **mini camlocks, standard camlocks, slamlocks, and IP-rated water-resistant variants** (with application-driven options like tool/coin operation and different cam geometries).