

L&F 5841 Furniture Lock

Furniture Lock · Lowe & Fletcher · 1 variant

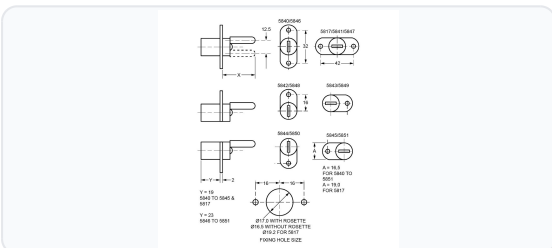
PRICING

From £19.82 ex VAT

£23.78 inc VAT

1 variant available
VAT 20.00%

Product Imagery



Specification Summary

Brand Lowe & Fletcher

Product type Furniture Lock

Product Description

The Lowe & Fletcher 5841 Furniture Lock is a high-quality, double-flange pedestal lock designed specifically for wooden office furniture, cabinets, and drawers. Featuring a horizontal movement and a robust double-wing design, this lock provides reliable security for your workplace or home storage.

This lock is supplied with a 19mm body length and is finished in a clean, professional nickel plating. It operates on the popular Lowe & Fletcher 18 key series, offering up to 200 distinct locking combinations (differs) to ensure individual security. The lock mechanism turns 180° anti-clockwise and is supplied complete with two keys. It is an ideal replacement or new-fit solution for pedestals, desks, and wooden cabinets.

Technical Specifications

- **Brand:** Lowe & Fletcher
- **Manufacturer Reference:** 5841
- **Body Length:** 19mm
- **Cylinder Diameter:** 19mm (Body) x 16mm (Barrel)
- **Cylinder Projection:** 19mm
- **Head Dimensions (W x H x D):** 16.5mm x 16.5mm x 19mm
- **Nozzle Diameter:** 16mm
- **Key Series:** 18 Series
- **Locking Combinations (Differs):** 200
- **Movement:** 180° Anti-Clockwise
- **Finish:** Nickel Plated
- **Keys Supplied:** 2
- **Weight:** 60g

Key Features

- **Double Flange Design:** Features a double-wing (double flange) body, commonly fitted to office pedestals and wooden furniture.
- **Horizontal Operation:** Designed for horizontal installation to suit standard desk and cabinet layouts.
- **18 Key Series:** Compatible with the widely used Lowe & Fletcher 18 series key range.
- **Complete with Keys:** Supplied with two keys as standard for immediate use.
- **Durable Finish:** High-quality nickel-plated finish for excellent durability and a clean aesthetic.

Variant Specifications And Pricing

Image	Part Number	Ex VAT	Inc VAT	Attributes / Specs
	L3335	£19.82	£23.78	<p>Barcode: 5055120606200 Brand: Lowe & Fletcher Cylinder Diameter: 19mm (Body) x 16mm (Barrel) Cylinder Projection: 19mm Differs: 200 Finish: Nickel Plated Fixing: Screw Key Series: 18 Keying - KA: Special Order Keying - MK: Special Order Keys Supplied: 2 Manufacturer Reference: 5841 Movement: 180° Anti Clockwise Nozzle Diameter: 16mm Packaging: Bagged Weight: 60g</p>

Brand Profile

Lowe & Fletcher



Lowe & Fletcher is a long-established British manufacturer of **locking systems for industry**, best known for high-volume, application-specific locks like **camlocks, quarter-turns, compression locks, and electronic/keypad solutions** used on things like **enclosures, cabinets, lockers, post/parcel units, and industrial equipment**. They're a **sixth-generation, family-owned** business with roots going back to **1889**, when **John Lowe and Thomas Fletcher** founded a lockmaking firm in **Willenhall** in the Black Country—one of the historic heartlands of UK lockmaking.

Today, Lowe & Fletcher forms part of the **Lowe & Fletcher Group**, which describes two main divisions: **Locking Systems** (industrial/OEM locks) and **Fire Safety** (smoke and fire containment systems).

Operationally, their Locking Systems division includes UK operations based around the West Midlands (e.g., **Wednesbury, WS10 7DE**) and they state they have multiple operational sites across Europe and the US to serve local and specialist markets.

On the product side, their camlock range alone spans **mini camlocks, standard camlocks, slamlocks, and IP-rated water-resistant variants** (with application-driven options like tool/coin operation and different cam geometries).