

# L&F 5804 Furniture Lock

Furniture Lock · Lowe & Fletcher · 1 variant

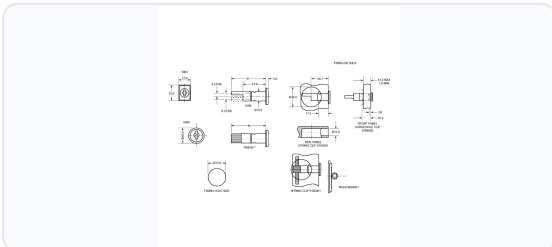
PRICING

**From £10.86 ex VAT**

£13.03 inc VAT

1 variant available  
VAT 20.00%

## Product Imagery



## Specification Summary

Brand: Lowe & Fletcher

Product type: Furniture Lock

## Product Description

The Lowe & Fletcher 5804 Furniture Lock is a robust and reliable pedestal drawer lock designed specifically for securing wooden office furniture. Ideal for multi-drawer pedestal units, this high-quality lock is engineered to control vertical locking bars or internal drawer mechanisms, ensuring your office documents and personal belongings remain secure.

Featuring a durable nickel-plated finish, the L&F 5804 has a compact 31mm body length and a 12mm body diameter, making it a versatile fit for various wooden furniture applications. It operates with a smooth 180° anti-clockwise movement and is supplied with two keys from the reliable 18 key series. With 200 unique locking combinations (differs) available, it offers excellent security. For larger commercial installations or bespoke

requirements, Keyed Alike (KA) and Master Keyed (MK) suites are also available as a special order.


## Technical Specifications

- **Brand:** Lowe & Fletcher
- **Manufacturer Reference:** 5804
- **Body Length:** 31mm
- **Body Diameter:** 12mm
- **Head Dimensions:** 17mm (W) x 23mm (H) x 3mm (D)
- **Finish:** Nickel Plated
- **Movement:** 180° anti-clockwise
- **Key Series:** 18 series
- **Locking Combinations (Differs):** 200
- **Keys Supplied:** 2

## Key Features

- **Wooden Furniture Security:** Specifically designed for securing wooden desks, cabinets, and multi-drawer pedestal units.
- **Smooth Operation:** Operates with a reliable 180° anti-clockwise rotation.
- **Versatile Keying Options:** Keyed Alike (KA) and Master Keyed (MK) options are available as special orders to suit larger installations.
- **High-Quality Finish:** Durable nickel-plated construction offers a clean, professional look and long-lasting performance.
- **Complete Package:** Supplied bagged with two keys, ready for installation.

### Variant Specifications And Pricing

Image	Part Number	Ex VAT	Inc VAT	Attributes / Specs
	2937	£10.86	£13.03	<p><b>Barcode:</b> 5055120604404  <b>Body Diameter:</b> 12mm  <b>Brand:</b> Lowe &amp; Fletcher  <b>Differs:</b> 200  <b>Finish:</b> Nickel Plated  <b>Key Series:</b> 18  <b>Keying - KA:</b> Special Order  <b>Keying - MK:</b> Special Order  <b>Keys Supplied:</b> 2  <b>Manufacturer Reference:</b> 5804  <b>Movement:</b> 180° Anti Clockwise  <b>Packaging:</b> Bagged  <b>Weight:</b> 400g</p>

## Brand Profile

Lowe & Fletcher



**Lowe & Fletcher** is a long-established British manufacturer of **locking systems for industry**, best known for high-volume, application-specific locks like **camlocks, quarter-turns, compression locks, and electronic/keypad solutions** used on things like **enclosures, cabinets, lockers, post/parcel units, and industrial equipment**. They're a **sixth-generation, family-owned** business with roots going back to **1889**, when **John Lowe and Thomas Fletcher** founded a lockmaking firm in **Willenhall** in the Black Country—one of the historic heartlands of UK lockmaking.

Today, Lowe & Fletcher forms part of the **Lowe & Fletcher Group**, which describes two main divisions: **Locking Systems** (industrial/OEM locks) and **Fire Safety** (smoke and fire containment systems).

Operationally, their Locking Systems division includes UK operations based around the West Midlands (e.g., **Wednesbury, WS10 7DE**) and they state they have multiple operational sites across Europe and the US to serve local and specialist markets.

On the product side, their camlock range alone spans **mini camlocks, standard camlocks, slamlocks, and IP-rated water-resistant variants** (with application-driven options like tool/coin operation and different cam geometries).