

L&F 1332 Nut Fix Camlock

Nut Fix · Lowe & Fletcher · 1 variant

PRICING

From £9.53 ex VAT

£11.44 inc VAT

1 variant available
VAT 20.00%

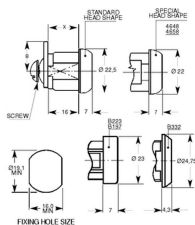
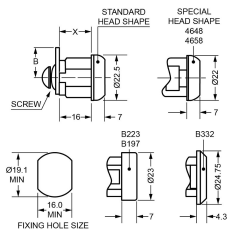
Product Imagery



Specification Summary

Brand **Lowe & Fletcher**

Product type **Nut Fix**



Product Description

The Lowe & Fletcher (L&F) 1332 Nut Fix Camlock is a highly reliable and versatile locking solution designed for a wide range of applications, including lockers, cupboards, cabinets, and metal or wooden office furniture. Featuring a robust 16mm body length and a clean, round-faced design with a bright chrome finish, this camlock offers both durability and a professional aesthetic.

This model is secured using a standard nut fixing method, ensuring a firm and stable installation within a standard "Double D" mounting hole. It operates on the reliable Lowe & Fletcher 92 Series cylinder system, providing up to 200 distinct key combinations (differs) for enhanced security. Please note that this is a non-mastered lock, meaning it cannot be operated by a master key.

Supplied with two keys as standard, the lock features a 180° anti-clockwise movement to lock and unlock, making it a practical and straightforward choice for everyday security needs.

Technical Specifications

- **Brand:** Lowe & Fletcher (L&F)
- **Model:** 1332
- **Body Length:** 16mm
- **Body Width:** 16mm
- **Head Diameter:** 22.5mm
- **Cylinder System:** 92 Series
- **Keying:** Keyed to differ (KD)
- **Lock Combinations (Differs):** 200
- **Movement:** 180° anti-clockwise
- **Fixing Type:** Nut fix
- **Keys Supplied:** 2
- **Finish:** Bright Chrome

Key Features

- **Versatile Application:** Ideal for securing cupboards, cabinets, lockers, and office furniture.
- **Secure Nut Fixing:** Provides a stable and robust installation in standard "Double D" fixing holes.
- **Non-Mastered Cylinder:** Designed for individual security where master key access is not required.
- **Durable Construction:** Features a high-quality round face with a bright chrome finish for long-lasting performance.
- **Complete with Keys:** Supplied with two keys, ready for immediate installation and use.

Variant Specifications And Pricing

Image	Part Number	Ex VAT	Inc VAT	Attributes / Specs
	2891	£9.53	£11.44	<p> Barcode: 5055120604688 Body Length: 16mm Body Width: 16mm Brand: Lowe & Fletcher Cam Height: 51mm Cylinder System: Lowe & Fletcher Cam Lock 92 Series Differs: 200 Fixing: Nut Keyed: Keyed To Differ Keying - KA: In-House Keying - MK: Special Order Keys Supplied: 2 Manufacturer Reference: 1332 03 2 Movement: 180° Anti Clockwise Packaging: Loose Weight: 60g </p>

Brand Profile

Lowe & Fletcher



Lowe & Fletcher is a long-established British manufacturer of **locking systems for industry**, best known for high-volume, application-specific locks like **camlocks, quarter-turns, compression locks, and electronic/keypad solutions** used on things like **enclosures, cabinets, lockers, post/parcel units, and industrial equipment**. They're a **sixth-generation, family-owned** business with roots going back to **1889**, when **John Lowe and Thomas Fletcher** founded a lockmaking firm in **Willenhall** in the Black Country—one of the historic heartlands of UK lockmaking.

Today, Lowe & Fletcher forms part of the **Lowe & Fletcher Group**, which describes two main divisions: **Locking Systems** (industrial/OEM locks) and **Fire Safety** (smoke and fire containment systems).

Operationally, their Locking Systems division includes UK operations based around the West Midlands (e.g., **Wednesbury, WS10 7DE**) and they state they have multiple operational sites across Europe and the US to serve local and specialist markets.

On the product side, their camlock range alone spans **mini camlocks, standard camlocks, slamlocks, and IP-rated water-resistant variants** (with application-driven options like tool/coin operation and different cam geometries).