

ILS FDM007-2 Diamond Housing Unit

Bullet Locks · ILS · 1 variant

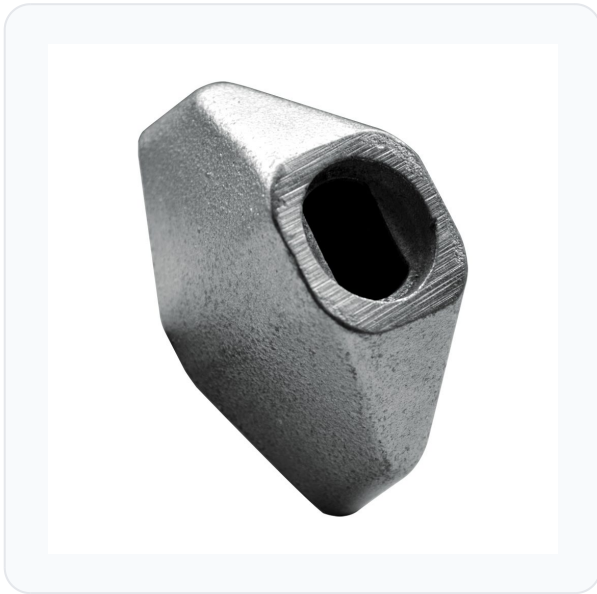
PRICING

From £22.22 ex VAT

£26.66 inc VAT

1 variant available
VAT 20.00%

Product Imagery



Specification Summary

Brand	ILS
Product type	Bullet Locks

Product Description

The ILS FDM007-2 Diamond Housing Unit by Italian Locking Systems is a robust, weld-on housing designed specifically to accommodate the FDM007-1 round face bullet lock.

Engineered for commercial and industrial security, this housing unit is welded directly to the roller shutter frame. Once in place, the bullet lock pin is inserted through the housing and frame, securely locking into the shutter to prevent unauthorised lifting or tampering.

Constructed with a durable satin chrome finish, the housing features a distinctive diamond shape and measures 47mm in depth. It provides a reliable, heavy-duty anchor point for your shutter security setup.

Technical Specifications

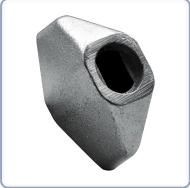
- **Brand:** ILS (Italian Locking Systems)
- **Manufacturer Reference:** FDM.007-2
- **Height:** 47mm
- **Depth:** 47mm
- **Finish:** Satin Chrome
- **Weight:** 484g

- **Pack Quantity:** 1
- **Barcode:** 5055120762487

Key Features

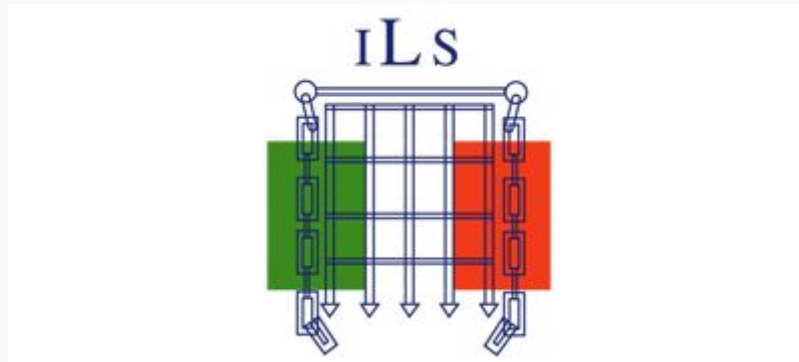
- **Weld-On Installation:** Designed to be welded directly to the shutter frame for maximum strength and security.
- **Perfect Compatibility:** Specially designed to suit the ILS FDM007-1 round face bullet lock (sold separately).
- **Diamond Housing Shape:** Distinctive diamond profile provides a neat, secure fit.
- **Durable Finish:** Finished in satin chrome for enhanced corrosion resistance and a professional look.
- **Robust Construction:** Heavy-duty design weighing 484g to withstand physical attacks.

Variant Specifications And Pricing

Image	Part Number	Ex VAT	Inc VAT	Attributes / Specs
	L24731	£22.22	£26.66	Barcode: 5055120762487 Brand: ILS Depth: 47mm Finish: Satin Chrome Height: 47mm Manufacturer Reference: FDM.007-2 Pack Quantity: 1 Weight: 484g

Brand Profile

ILS



ILS (Italian Locking Systems) is a UK trade security brand best known for **heavy-duty locking products** aimed at two very specific, very real-world sectors: the **roller shutter trade** and the **container hire / site security** world. In other words: if it's metal, outdoors, and someone's trying to defeat it with an angle grinder and bad intentions, ILS is probably in the conversation.

ILS **started trading in 1987**, initially selling roller shutter locks, padlocks and shutter components, and later became affiliated members of the **British Blind and Shutter Association (BBSA)**.

What they're known for

ILS built its name on **roller shutter locking** and the hardware that goes with it:

- **Bullet locks** for roller shutters (common models like the **FDM007-1** round-face style), typically sold with features like **5-pin locking** and key removal only in the locked position.
- **Central shutter locks / espagnolette-style locks** (including "Prefer" variants that accept a **Euro cylinder**, useful when you want to standardise keying).
- Trade channels also position ILS as a major stockist/supplier for **container padlocks, bullet locks, guide locks, ground units**, and related site-security components.