

ICS Fire Rated Solenoid Bolt

Electric Locking · ICS · 1 variant

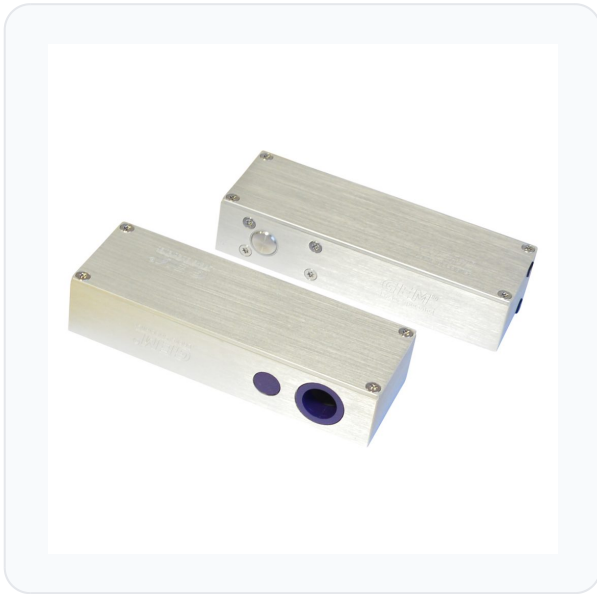
PRICING

From £258.81 ex VAT

£310.57 inc VAT

1 variant available
VAT 20.00%

Product Imagery



Specification Summary

Brand	ICS
Product type	Electric Locking

Product Description

The ICS FR-EB300 Fire Rated Solenoid Bolt is a highly reliable, high-security electric locking solution designed for both timber and metal doors. Rigorously tested to BS EN 1634, this robust solenoid bolt is fully certified for use on FD30 and FD60 fire doors, making it an ideal choice for commercial and residential fire safety applications.

Operating on a 12V DC input, the FR-EB300 is a fail-safe (fail unlocked) device, ensuring that the door automatically unlocks in the event of a power failure to allow safe egress. It features an adjustable auto-relocking timer delay of 0, 3, 6, or 9 seconds, giving you complete control over access timing. Built for longevity, it has been tested to 500,000 cycles and can be installed either horizontally or vertically to suit your door configuration.

Technical Specifications

- **Brand:** ICS
- **Manufacturer Reference:** FR-EB300
- **Input Voltage:** 12V DC
- **Current Consumption:** Pull 0.9A, Holding 0.3A
- **Holding Force:** 544kg (1200lbs)
- **Operation:** Fail Unlocked (Fail-Safe)

- **Fire Rating:** BS EN 1634 (Suitable for FD30 and FD60 applications)
- **Installation:** Horizontal or vertical
- **Operating Temperature:** -10°C to +45°C
- **Dimensions:** 166mm (H) x 56mm (W) x 32mm (D)
- **Finish:** Satin Anodised Aluminium
- **Weight:** 3.8kg
- **Guarantee:** 1 Year

Key Features

- **Fire Rated Security:** Fully tested to BS EN 1634 for FD30 and FD60 timber and metal fire doors.
- **Fail-Safe Operation:** Automatically unlocks when power is cut, ensuring safe emergency evacuation.
- **Adjustable Auto-Relock Delay:** Built-in timer delay can be set to 0, 3, 6, or 9 seconds.
- **High Durability:** Tested to 500,000 cycles for long-lasting, reliable performance.
- **Flexible Mounting:** Suitable for both horizontal and vertical installation.

Variant Specifications And Pricing

Image	Part Number	Ex VAT	Inc VAT	Attributes / Specs
	L30078	£258.81	£310.57	<p>Application: Metal & Timber Doors</p> <p>Barcode: 5056240108407</p> <p>Body Depth: 32mm</p> <p>Body Height: 166mm</p> <p>Body Width: 56mm</p> <p>Brand: ICS</p> <p>Current Consumption: Pull 0.9A & Holding 0.3A</p> <p>Finish: Satin Anodised Aluminium</p> <p>Guarantee: 1 Year</p> <p>Holding Force: 544Kg / 1200Lbs</p> <p>Input Voltage: 12V DC</p> <p>Key Override: No</p> <p>Manufacturer Reference: FR-EB300</p> <p>Operation: Fail Unlocked</p> <p>Pack Quantity: 1</p> <p>Packaging: Boxed</p> <p>Standards: BS EN 1634</p> <p>Time Delay: 0, 3, 6 or 9 seconds</p> <p>Weight: 3.8Kg</p>

Brand Profile

ICS



ICS Security (ICS Security Solutions Ltd) is a UK access-control hardware brand and supplier focused on the “nuts and bolts” of electronic door control: **maglocks, electric locks/bolts, strikes, lock releases, and packaged locking kits** designed to make access-control installs cleaner and more reliable. They describe themselves as an access-control specialist founded in **2003**, with **20+ years** in the sector.

They operate from **Blisworth, Northamptonshire** (Units 1–2, JBJ Business Park, Northampton Road, NN7 3DW), supporting trade customers with a range that covers the common building blocks of access control systems.

Product-wise, ICS’s catalogue is very “installer reality”:

- **Magnetic locks** in multiple formats (standard, slimline/transom, stainless, monitored, with door status options), typically running **12–24V DC selectable** and specced by holding force (e.g., 600–1200 lbs and up).
- **Electric locks / bolts and locking kits**, including “compliant lock packages” that bundle the parts needed for controlled entry with free egress, calling out standards like **EN179 / EN1125** in their kit descriptions.
- A broader access-control “system parts” approach: they position the range as covering “all parts of access control systems,” aiming to let installers choose a complete solution from one source.