

# ICS Double Magnet With Door Status

ICS · ICS · 1 variant

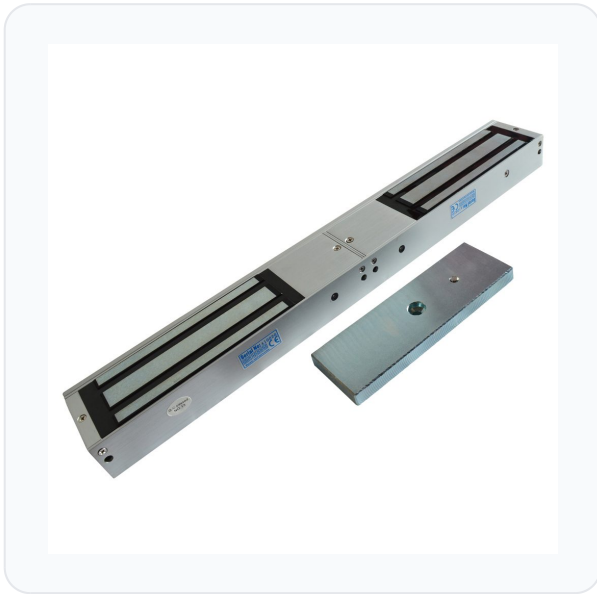
PRICING

**From £260.96 ex VAT**

£313.15 inc VAT

1 variant available  
VAT 20.00%

## Product Imagery



## Specification Summary

Brand	ICS
Product type	ICS

## Product Description

The ICS Double Magnet with Door Status (U10005DS) is a high-quality, surface-mounted double mini magnetic lock designed for outward-opening double doors. Offering a robust holding force of up to 544kg (272kg per door), this fail-safe (fail unlocked) maglock provides reliable security for commercial and residential access control systems.

Constructed with a durable satin anodised aluminium housing, the unit is built to withstand demanding environments, operating efficiently in temperatures ranging from -10°C to 55°C. It features selectable dual-voltage operation (12V or 24V DC) and integrated door status monitoring, allowing security systems to verify whether the doors are physically open or closed.

This complete kit is supplied boxed with the double magnet housing and two armature plates, making it an excellent choice for professional installers seeking a dependable, monitored locking solution.

## Technical Specifications


- **Manufacturer Reference:** U10005DS (L30077)
- **Holding Force:** 544kg / 1200lbs total (272kg / 600lbs per door)
- **Input Voltage:** 12V / 24V DC (Selectable)
- **Current Consumption:** 0.5A @ 12V DC / 0.25A @ 24V DC (per door)

- **Operation:** Fail-safe (Fail Unlocked)
- **Fitting:** Surface mounted
- **Handing:** Outward opening
- **Material:** Aluminium housing with Satin Anodised Aluminium finish
- **Operating Temperature:** -10°C to 55°C
- **Magnet Dimensions:** 500mm (L) x 42.5mm (H) x 25mm (D)
- **Armature Plate Dimensions:** 185mm (W) x 38mm (H) x 12mm (D)
- **Weight:** 3.8kg

## Key Features

- **Integrated Door Status Monitoring:** Provides real-time feedback on whether the doors are open or closed.
- **Dual Voltage Operation:** Selectable 12V or 24V DC input to suit your access control system.
- **Fail-Safe Security:** Automatically unlocks in the event of a power failure to ensure safe egress.
- **High Holding Force:** Delivers a reliable 272kg (600lbs) of holding force per door.
- **Durable Construction:** Housed in robust satin anodised aluminium for long-lasting performance.
- **Complete Kit:** Supplied boxed with double magnet and armature plates.

## Variant Specifications And Pricing

Image	Part Number	Ex VAT	Inc VAT	Attributes / Specs
	L30077	£260.96	£313.15	<p><b>Barcode:</b> 5056240108391</p> <p><b>Brand:</b> ICS</p> <p><b>Current Consumption:</b> 0.5A @ 12VDC / 0.25A @24VDC Per Door</p> <p><b>Finish:</b> Satin Anodised Aluminium</p> <p><b>Fitting:</b> Surface</p> <p><b>Guarantee:</b> 1 Year</p> <p><b>Handed:</b> Outward Opening</p> <p><b>Holding Force:</b> 272Kg / 600Lbs Per Door</p> <p><b>Input Voltage:</b> 12/24V DC</p> <p><b>Magnet Depth:</b> 25mm</p> <p><b>Magnet Height:</b> 42.5mm</p> <p><b>Magnet Length:</b> 500mm</p> <p><b>Manufacturer Reference:</b> U10005DS</p> <p><b>Material:</b> Aluminium</p> <p><b>Monitored:</b> No</p> <p><b>Notes:</b> With Door Status</p> <p><b>Operation:</b> Fail Unlocked</p> <p><b>Pack Quantity:</b> 1</p> <p><b>Packaging:</b> Boxed</p> <p><b>Plate Depth:</b> 12mm</p> <p><b>Plate Height:</b> 38mm</p> <p><b>Plate Width:</b> 185mm</p> <p><b>Weight:</b> 3.8Kg</p>

## Brand Profile

ICS



**ICS Security (ICS Security Solutions Ltd)** is a UK access-control hardware brand and supplier focused on the “nuts and bolts” of electronic door control: **maglocks, electric locks/bolts, strikes, lock releases, and packaged locking kits** designed to make access-control installs cleaner and more reliable. They describe themselves as an access-control specialist founded in **2003**, with **20+ years** in the sector.

They operate from **Blisworth, Northamptonshire** (Units 1–2, JBJ Business Park, Northampton Road, NN7 3DW), supporting trade customers with a range that covers the common building blocks of access control systems.

Product-wise, ICS’s catalogue is very “installer reality”:

- **Magnetic locks** in multiple formats (standard, slimline/transom, stainless, monitored, with door status options), typically running **12–24V DC selectable** and specced by holding force (e.g., 600–1200 lbs and up).
- **Electric locks / bolts and locking kits**, including “compliant lock packages” that bundle the parts needed for controlled entry with free egress, calling out standards like **EN179 / EN1125** in their kit descriptions.
- A broader access-control “system parts” approach: they position the range as covering “all parts of access control systems,” aiming to let installers choose a complete solution from one source.