

Hardie Ground Anchor Ring

Ground Anchor · Hardie · 1 variant

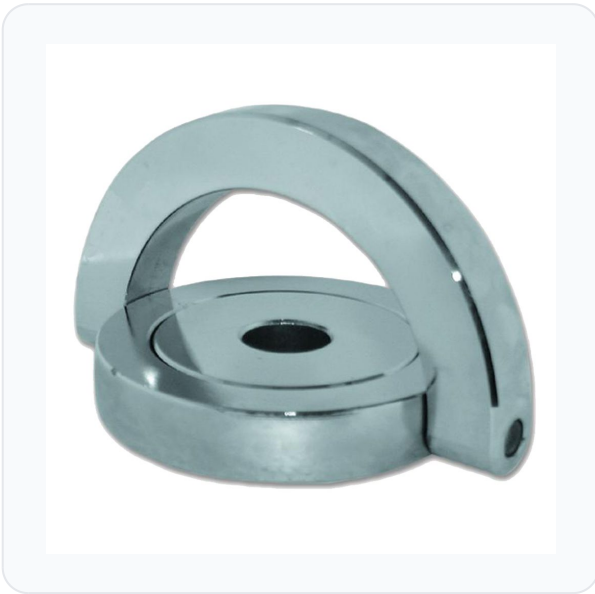
PRICING

From £146.40 ex VAT

£175.68 inc VAT

1 variant available
VAT 20.00%

Product Imagery



Specification Summary

Brand	Hardie
Product type	Ground Anchor

Product Description

The Hardie Ground Anchor Ring (also known as the Hardie-Secure Ground Anchor) provides robust, high-security protection for motorcycles, caravans, trailers, plant equipment, and valuable garden tools. Designed for maximum versatility, this heavy-duty anchor can be mounted to either the floor or the wall, making it ideal for garages, driveways, and commercial yards.

One of its standout design features is its ability to fold completely flat when not in use. This low-profile design ensures that cars and other vehicles can safely drive over it without risk of damage. Engineered to withstand aggressive attacks, the anchor features a fully case-hardened steel body with a ceramic core for superior resistance against cutting. Its unique curved outer surface and tight tolerances leave no gaps for pry bars or levers to gain

purchase, while its clever swivelling action dissipates the force of hammer blows directly into the ground.

Installation is exceptionally quick and straightforward, taking approximately 15 minutes. The anchor uses a single-bolt fixing system and comes complete with all necessary fixings and an Allen key, requiring only an electric drill to secure it in place.

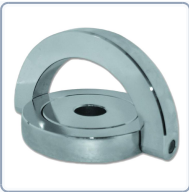
Technical Specifications

- **Brand:** Hardie
- **Finish:** Chrome Plated
- **Holding Force:** Over 8 Tonnes
- **Weight:** 2.4kg
- **Fixing Type:** Single-bolt fixing (all fixings included)
- **Material:** Case-hardened steel with a ceramic core
- **Pack Quantity:** 1

Key Features

- **Folds Flat:** Folds completely flat when not in use, allowing vehicles to safely drive over it.
- **Versatile Mounting:** Can be securely mounted to either the floor or the wall.
- **High-Security Design:** Case-hardened construction with a ceramic core offers excellent resistance to cutting and drilling.
- **Anti-Pry Shape:** Unique curved surface and tight tolerances ensure there are no gaps for lever or pry attacks.
- **Impact Dissipation:** Clever swivelling action dissipates hammer blow energy directly into the ground.
- **Quick Installation:** Easy to install in approximately 15 minutes using the included single-bolt fixing and Allen key.

Variant Specifications And Pricing

Image	Part Number	Ex VAT	Inc VAT	Attributes / Specs
	L13512	£146.40	£175.68	<p>Barcode: 5055120659374</p> <p>Brand: Hardie</p> <p>Finish: Chrome Plated</p> <p>Holding Force: Over 8 Tonnes</p> <p>Manufacturer Reference: HARDIE GROUD ANCHOR</p> <p>Pack Quantity: 1</p> <p>Packaging: Visi</p> <p>Weight: 2.4Kg</p>

Brand Profile

Hardie

No brand description provided.