

# Greenteq Omega Letterbox

Letter Plate · Greenteq · 3 variants

PRICING

**From £69.89 ex VAT**

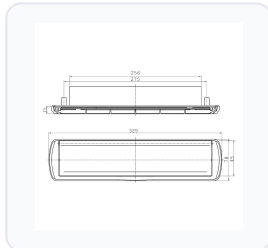
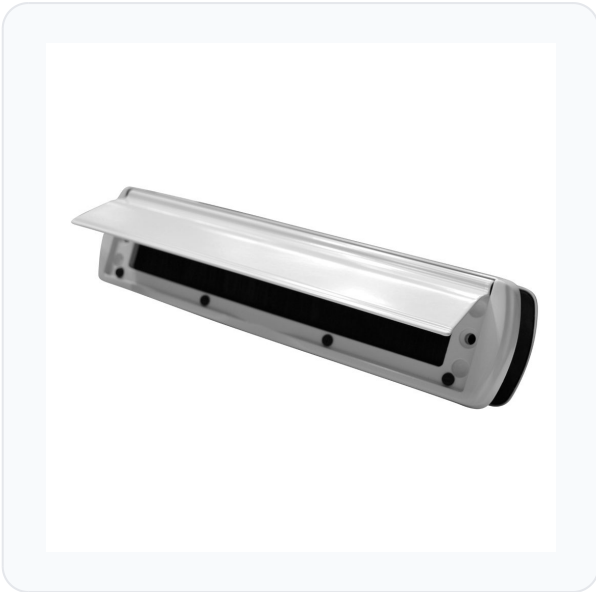
£83.87 inc VAT

3 variants available

VAT 20.00%

Range: £69.89 - £93.99 ex VAT

**Product Imagery**



**Specification Summary**

Brand Greenteq

Product type Letter Plate

**Product Description**

The Greenteq Omega Letterbox is a premium, high-performance letter plate designed to provide excellent durability, weather protection, and style for modern composite doors and 40 - 80mm mid-rails. Featuring a robust, all-metal frame construction, this letterbox is built to withstand the elements while maintaining its sleek appearance.

One of its standout features is the intelligent dual-seal system, combining internal nylon brush seals with external Thermo-Plastic Rubber and Polyethylene seals to deliver exceptional protection against draughts and water ingress. To ensure a peaceful home environment, the letterbox is engineered with a strong, cushioned closing action that prevents the flaps from rattling or banging in windy conditions.

Both the inner and outer flaps are designed with convenient finger-access indentations on the lower frame for easy opening. Additionally, both flaps open to a full 180°, preventing accidental damage to the springs or door surface when larger items are posted.

This letterbox is available in a choice of finishes, including Chrome Plated, Gold, and White, with corresponding manufacturer references and barcodes. Please select your preferred finish and specifications from the options below.




## Technical Specifications

- **Overall Length:** 32.5cm (325mm)
- **Depth:** 15mm
- **Bolt Centres:** 275mm
- **Opening Size:** 256mm x 45mm
- **Door Thickness Compatibility:** Suits 40mm to 80mm mid-rails and composite doors
- **Fixings:** Supplied with M6 thru-fix screws (can also be surface fixed)
- **Frame Construction:** All-metal
- **Weight:** 1.35kg
- **Pack Quantity:** 1
- **Finish:** Chrome Plated, Gold, or White (please choose from the options below)
- **Manufacturer Reference:** 2QBX0001, 2QBX0005, or 2QBX0006 (please choose from the options below)
- **Barcode:** 5055120767710, 5055120767727, or 5055120767734 (please choose from the options below)

## Key Features

- **Cushioned Closing Action:** Strong, cushioned mechanism prevents annoying rattling and banging in windy conditions.
- **Superior Weather Protection:** Features internal nylon brush seals and external Thermo-Plastic Rubber and Polyethylene seals to block draughts and water.
- **180° Flap Opening:** Both internal and external flaps open to a full 180° to prevent over-stressing the springs and protect against damage.
- **Easy Finger Access:** Indentations on the lower frame of both flaps allow for effortless opening.
- **Robust All-Metal Build:** High-quality metal frame construction ensures long-term durability and performance.
- **Multiple Finishes Available:** Choose from Chrome Plated, Gold, or White to perfectly match your door furniture.

## Variant Specifications And Pricing

Image	Part Number	Ex VAT	Inc VAT	Attributes / Specs
	L25272	£69.89	£83.87	<b>Alias Brand:</b> VBH <b>Barcode:</b> 5055120767710 <b>Bolt Centres:</b> 275mm <b>Brand:</b> Greenteq <b>Depth:</b> 15mm <b>Finish:</b> White <b>Length:</b> 32.5cm <b>Manufacturer Reference:</b> 2QBX0001 <b>Opening Size:</b> 256 x 45mm <b>Pack Quantity:</b> 1 <b>Weight:</b> 1.35Kg
	L25273	£93.99	£112.79	<b>Alias Brand:</b> VBH <b>Barcode:</b> 5055120767727 <b>Bolt Centres:</b> 275mm <b>Brand:</b> Greenteq <b>Depth:</b> 15mm <b>Finish:</b> Gold <b>Length:</b> 32.5cm <b>Manufacturer Reference:</b> 2QBX0005 <b>Opening Size:</b> 256 x 45mm <b>Pack Quantity:</b> 1 <b>Weight:</b> 1.35Kg
	L25274	£80.97	£97.16	<b>Alias Brand:</b> VBH <b>Barcode:</b> 5055120767734 <b>Bolt Centres:</b> 275mm <b>Brand:</b> Greenteq <b>Depth:</b> 15mm <b>Finish:</b> Chrome Plated <b>Length:</b> 32.5cm <b>Manufacturer Reference:</b> 2QBX0006 <b>Opening Size:</b> 256 x 45mm <b>Pack Quantity:</b> 1 <b>Weight:</b> 1.35Kg

## Brand Profile

Greenteq



**greenteQ** (often written **Greenteq**) is the **in-house window and door hardware brand of VBH**, created to give fabricators, installers and repair/maintenance teams a dependable “one brand” option across the everyday components that make doors and windows function properly. VBH launched greenteQ as its own hardware brand in **2009**, and it’s been expanding the range ever since.

greenteQ sits squarely in the trade world: products for **uPVC/PVCu, aluminium, timber/wood and composite** windows and doors, covering both new manufacture and remedial work. The catalogue spans **locking systems, multipoint locks, handles/furniture, hinges**, and a long list of ancillaries designed to be installer-friendly and consistent to spec.

A big part of the brand identity is that it’s VBH-backed: greenteQ customers are explicitly described as benefiting from **VBH’s international product know-how**, and VBH GB notes the UK has its own greenteQ design focus to meet market-specific requirements (like **suited furniture** expectations).

On the “security hardware” end, greenteQ also sells cylinders and higher-security components you’ll see in the door trade - e.g. the **Orion** euro cylinder is marketed as **TS007 3-Star (Kitemark) approved** in VBH communications and stockist listings.