

GEZE TS4000E Size 1-6 Overhead Door Closer Body with Electro-hydraulic Hold Open

Overhead · Geze · 1 variant

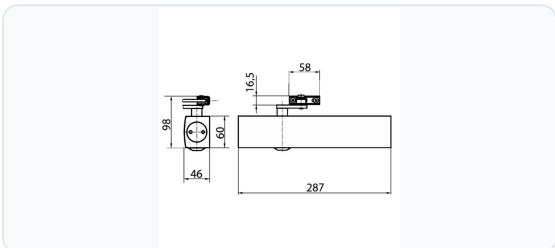
PRICING

From £315.55 ex VAT

£378.66 inc VAT

1 variant available
VAT 20.00%

Product Imagery



Specification Summary

Brand	Geze
Product type	Overhead

Product Description

The GEZE TS4000E is a high-performance overhead door closer body featuring an electro-hydraulic hold-open device. Designed for use on single-action doors up to 1400mm wide, it is fully approved for installation on fire and smoke protection doors.

Operating on a 24V DC power supply, the hold-open function can be set between 80° and 175° in accordance with BS EN 1155. In the event of a fire or power failure, the hold-open device is deactivated, allowing the door to close securely and maintain fire safety.

The closer features a variable closing force of EN size 1-6 (in accordance with BS EN 1154), which can be easily adjusted from the front of the body alongside a visual closing force display. It is fully reversible, making it suitable for both left-hand and right-hand doors without conversion.

Technical Specifications

- **Brand:** Geze
- **Power Size:** EN 1 - 6 (adjustable)
- **Maximum Door Width:** 1400mm
- **Input Voltage:** 24V DC
- **IP Rating:** IP43
- **Standards:** BS EN 1154, BS EN 1155 (BS EN 1155:1997)
- **Body Height:** 60mm
- **Body Depth:** 46mm
- **Weight:** 2.764kg
- **Finish:** Silver
- **Handing:** Reversible (suitable for left and right-hand doors)

Key Features

- **Electro-Hydraulic Hold-Open:** Variable hold-open adjustment between 80° and 175° in accordance with BS EN 1155.
- **Fire Safety Integration:** Automatically releases and closes securely in the event of a fire or power failure.
- **Adjustable Closing Force:** Size 1-6 closing force (BS EN 1154) with a convenient visual display indicator.
- **Front-Adjustable Controls:** Thermo-constant closing speed can be easily adjusted from the front of the body.
- **Low Power Consumption:** Energy-efficient operation on a 24V DC supply.
- **Versatile Installation:** Reversible design suitable for both left and right-hand single-action doors.

Variant Specifications And Pricing

Image	Part Number	Ex VAT	Inc VAT	Attributes / Specs
	L27493	£315.55	£378.66	<p> Adjustable Closing Speed: Yes Adjustable Latch Action: No Backcheck: No Barcode: 5055120786360 Body Depth: 46mm Body Height: 60mm Brand: Geze Depth: 46mm Finish: Silver Handed: Reversible Hold Open: Yes Input Voltage: 24V DC IP Rating: IP43 Manufacturer Reference: TS4000E Max Door Width: 1400mm Pack Quantity: 1 Standards: BS EN 1155:1997, BS EN 1154, BS EN 1155 Strength Size: 1 To 6 Weight: 2.764Kg </p>

Brand Profile

Geze



GEZE is a German, **family-owned** global manufacturer of **door, window, and safety technology**, best known in the trade for **door closers, automatic door systems** (sliding/swing/revolving), **window drives**, and **smoke & heat extraction (SHEV)** solutions used in modern building safety and automation.

Founded in **1863**, GEZE remains independently owned and headquartered in **Leonberg**, near Stuttgart - one of the reasons it's often described as a "proper engineering company" rather than a brand label slapped on a catalogue.

In practical terms, GEZE lives in the space where **comfort meets compliance**:

- **Door closing**: from standard overhead closers to integrated systems for higher-spec doors and fire/smoke applications.
- **Automatic entrances**: operators for swing and sliding doors used in public buildings, retail, airports, offices—accessibility and flow without sacrificing safety.
- **Safety + building automation**: electrically operated window systems for **natural ventilation** and for **smoke and heat extraction** in a fire, plus increasing emphasis on digital networking of doors/windows in "smart building" setups.

Scale-wise, GEZE states it has **3,000+ employees worldwide, 37 subsidiaries**, and reported **€507m+ turnover (FY 2022/23)** - big enough to be everywhere, still small enough to feel focused.