

# EXIDOR 709EC Knob Operated Outside Access Device

Outside Access Device · Exidor · 1 variant

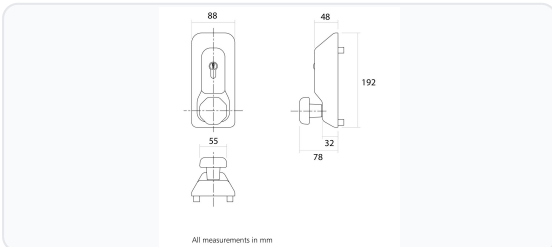
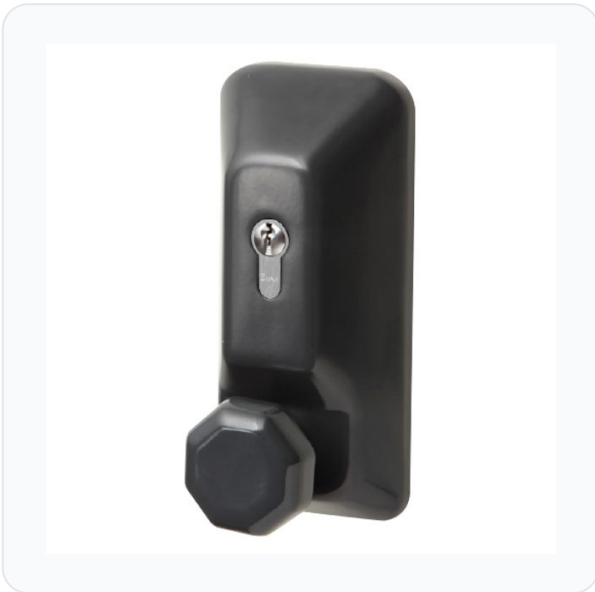
PRICING

**From £758.93 ex VAT**

£910.72 inc VAT

1 variant available  
VAT 20.00%

## Product Imagery



## Specification Summary

Brand	Exidor
Product type	Outside Access Device

## Product Description

The Exidor 709EC is a high-security, knob-operated outside access device (OAD) designed for use with the Exidor 7000 series of panic and emergency exit hardware. Manufactured in the UK from robust stainless steel, this unit is engineered to resist physical force and drill attacks, making it ideal for high-security applications. It features integrated cylinder protection to prevent lock manipulation and unauthorised access.

This versatile, non-handed device is finished with a stylish RAL 7016 Anthracite Grey epoxy powder coating. When unlocked, the mechanism engages, allowing the user to retract the internal bolts by rotating the knob. When locked, the mechanism disengages, allowing the knob to turn freely without operating the bolts, thereby securing the building while ensuring that internal emergency escape functions remain completely unaffected.

The unit is surface-mounted using concealed machine screws for added security and is supplied complete with a Euro cylinder and three keys. It is suitable as standard for doors up to 45mm thick.


## Technical Specifications

- **Brand:** Exidor
- **Manufacturer Reference:** 709EC
- **Mechanism:** Euro Cylinder
- **Keys Supplied:** 3
- **Finish:** Anthracite Grey (RAL 7016)
- **Handing:** Reversible (non-handed)
- **Material:** Stainless steel
- **Door Thickness:** Up to 45mm
- **Knob Diameter:** 55mm
- **Handle Projection:** 46mm
- **Width:** 88mm
- **Depth:** 78mm
- **Weight:** 2.4kg
- **Mounting:** Surface mounted with concealed machine screws
- **Compatibility:** Certified for use with the Exidor 7000 series of high-security panic and emergency exit hardware

## Key Features

- **High-Security Construction:** Manufactured in the UK from stainless steel to resist force and drill attacks.
- **Clutch Mechanism:** When locked, the knob rotates freely to prevent forced entry; when unlocked, it engages to retract the bolts.
- **Cylinder Protection:** Built-in protection helps prevent lock manipulation and picking.
- **Reversible Design:** Non-handed unit suitable for both left and right-handed doors.
- **Complete Package:** Supplied boxed with a Euro cylinder and three keys.
- **Concealed Fixing:** Surface mounted with concealed machine screws to prevent external tampering.

### Variant Specifications And Pricing

Image	Part Number	Ex VAT	Inc VAT	Attributes / Specs
	L26119	£758.93	£910.72	<p><b>Barcode:</b> 5055120775647  <b>Brand:</b> Exidor  <b>Depth:</b> 78mm  <b>Door Thickness:</b> 45mm  <b>Finish:</b> Anthracite Grey  <b>Handed:</b> Reversible  <b>Handle Projection:</b> 46mm  <b>Keys Supplied:</b> 3  <b>Knob Diameter:</b> 55mm  <b>Manufacturer Reference:</b> 709EC  <b>Mechanism:</b> Euro Cylinder  <b>Pack Quantity:</b> 1  <b>Packaging:</b> Boxed  <b>Weight:</b> 2.4Kg  <b>Width:</b> 88mm</p>

## Brand Profile

Exidor


 The logo for Exidor features the word "EXIDOR" in a bold, black, sans-serif font. A thick black horizontal line is positioned above the letters "I" and "D", extending from the top of the "I" to the right edge of the frame.

**Exidor** is a UK panic-and-emergency-exit hardware brand best known for **push bars, push pads, and multi-point exit devices** used on fire exits and escape routes in commercial buildings. It's one of those "you don't notice it until you *really* need it" brands—built around reliable, standards-compliant egress hardware.

Exidor says it has been a leading manufacturer in this category for **around 90 years**, and trade/brand info places its establishment at **1931**.

**Standards & compliance** are central to the brand's positioning: Exidor panic and emergency exit devices are marketed as **CE marked** and **tested to EN 1125 (panic exit devices)** and **EN 179 (emergency exit devices)**—the core European standards that specifiers and installers care about for public buildings and controlled escape routes.

**Ownership / group:** Exidor was acquired by **ASSA ABLOY Opening Solutions UK & Ireland in 2018** (widely reported in trade press), and Companies House filings list **Assa Abloy Limited** as the controlling party.

**Where it sits today:** Exidor is now presented as a **range within the UNION family** (ASSA ABLOY's UK door hardware portfolio), and the brand is used across "real world" commercial projects where you might need bespoke finishes, different keep/bolt options, alarms, or microswitch variants for monitoring.