

# EVVA OKZ Oval WC Cylinder

WC Cylinder · Evva · 2 variants

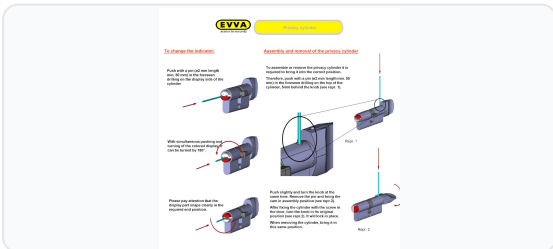
**PRICING**

**From £93.30 ex VAT**

£111.96 inc VAT

2 variants available  
VAT 20.00%

## Product Imagery



## Specification Summary

Brand	Evva
Product type	WC Cylinder

## Product Description

The EVVA OKZ Oval WC Cylinder is a robust, oval-profile privacy cylinder designed specifically for bathroom and toilet doors. It is an ideal solution for situations requiring secure thumbturn operation from the inside and reliable emergency access from the outside, such as in public toilets, offices, or family homes.

The external side features a slot-operated turn (compatible with a coin or screwdriver) with a clear red and white indicator to show occupancy at a glance. For safety, this allows quick emergency access if someone becomes locked inside. Please note that the cam is engineered specifically for WC privacy locks, operating on a 180° rotation from 3 o'clock to 9 o'clock.

Constructed to high standards, the cylinder offers 30-minute fire resistance up to 821°C and is supplied complete with a connecting screw. Fitting instructions are available on request.

This cylinder is available in multiple finishes, including Polished Brass and Nickel Plated. Please choose your preferred finish from the options below.

## Technical Specifications

- **Brand:** Evva
- **Cylinder Profile:** Oval
- **Cylinder Type:** WC / Bathroom Privacy Cylinder
- **Overall Length:** 72mm
- **Side A (External):** 36mm (with emergency slot turn and red/white indicator)
- **Side B (Internal):** 36mm (with thumbturn)
- **Keys Supplied:** 0 (keyless privacy operation)
- **Cam Operation:** 180° rotation (from 3 o'clock to 9 o'clock)
- **Fire Resistance:** 30 minutes to 821°C
- **Finishes Available:** Polished Brass, Nickel Plated (please choose from the options below)

## Key Features

- **Emergency Access:** External slot-operated turn with a red/white indicator allows quick emergency override from the outside.
- **Privacy Locking:** Inside thumbturn provides smooth and reliable privacy locking for bathrooms and WCs.
- **Fire Rated:** Tested to offer 30-minute fire resistance up to 821°C.
- **Complete Kit:** Supplied complete with a connecting screw for straightforward installation.
- **Multiple Finishes:** Available in Polished Brass and Nickel Plated finishes to match your existing door hardware (please select below).

## Variant Specifications And Pricing

Image	Part Number	Ex VAT	Inc VAT	Attributes / Specs
	L9688	£93.30	£111.96	<p><b>A Side:</b> 36mm  <b>B Side:</b> 36mm (Turn)  <b>Barcode:</b> 5055120640105  <b>Body Length:</b> 72mm  <b>Brand:</b> Evva  <b>Cylinder Kitemark:</b> No  <b>Cylinder Profile:</b> Oval  <b>Cylinder Type:</b> WC Cylinder  <b>Finish:</b> Polished Brass  <b>Keys Supplied:</b> 0  <b>Length:</b> 72mm  <b>Manufacturer Reference:</b> OKZ 36-K36 WC  <b>Packaging:</b> Boxed  <b>Secured By Design:</b> No  <b>Snap Resistant:</b> No  <b>Sold Secure:</b> No  <b>Weight:</b> 338g</p>
	L9689	£93.30	£111.96	<p><b>A Side:</b> 36mm  <b>B Side:</b> 36mm (Turn)  <b>Barcode:</b> 5055120640082  <b>Body Length:</b> 72mm  <b>Brand:</b> Evva  <b>Cylinder Kitemark:</b> No  <b>Cylinder Profile:</b> Oval  <b>Cylinder Type:</b> WC Cylinder  <b>Finish:</b> Nickel Plated  <b>Keys Supplied:</b> 0  <b>Length:</b> 72mm  <b>Manufacturer Reference:</b> OKZ 36-K36 WC  <b>Packaging:</b> Boxed  <b>Secured By Design:</b> No  <b>Snap Resistant:</b> No  <b>Sold Secure:</b> No  <b>Weight:</b> 338g</p>

## Brand Profile

Evva



**EVVA** is an Austrian, **family-owned** security manufacturer based in **Vienna**, specialising in high-end **mechanical and electronic locking systems** for everything from homes to large, complex master-keyed organisations. The company was **founded in Vienna in 1919**, and it still runs **research, development, and production** from its Vienna headquarters, exporting globally.

In the trade/spec world, EVVA's reputation is built on **serious key control** and **master key system engineering**—locks designed not just to resist attack, but to keep access hierarchies manageable at scale (offices, hospitals, residential complexes, universities, etc.).

A couple of EVVA's standout mechanical platforms get referenced constantly:

- **ICS (Inner Code System)** – a reversible key system aimed at **highly complex master key structures**, with EVVA citing long patent protection (into the 2030s, depending on jurisdiction).
- **MCS (Magnetic Code System)** – EVVA positions this as a top-tier system for sophisticated master keying, with a strong anti-copying story (including resistance to modern replication methods).

They also explicitly brand themselves around innovation: EVVA talks about holding **200+ patents** and frames its history as “start-up energy since 1919” (which is an absolutely deranged sentence for a century-old lock company, but I respect the audacity).