

EVVA KDZ Euro WC Cylinder

Key & Turn Euro Cylinder (KDZ) · Evva · 2 variants

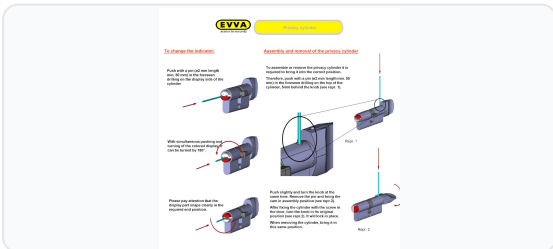
PRICING

From £93.30 ex VAT

£111.96 inc VAT

2 variants available
VAT 20.00%

Product Imagery



Specification Summary

Brand	Evva
Product type	Key & Turn Euro Cylinder (KDZ)

Product Description

The EVVA KDZ Euro WC Cylinder is a high-quality, standard euro profile cylinder designed specifically for bathroom and privacy lock applications. Operating on the robust EVVA A5 5-pin locking system, this cylinder features a convenient thumbturn on one side and a red/white slot-operated emergency release on the other. This design allows for quick emergency access from the outside using a coin or flat tool, making it ideal for public toilets, commercial premises, and residential bathrooms.

Please note that the cam is designed specifically for WC privacy locks and only operates on a 180-degree rotation (from 3 o'clock to 9 o'clock). It offers 30-minute fire resistance up to 821°C and is supplied complete with a connecting screw and three keys.

This cylinder is available in multiple finishes, including Polished Brass and Nickel Plated, and under different manufacturer references. Please select your preferred finish and specification from the options below. Optional special features, such as a Pre-Determined Break Point (PBP) for snap resistance (please note this is not TS007 rated) or sequential key numbering (TXT), are available upon request.

Technical Specifications

- **Cylinder Profile:** Euro
- **Cylinder Type:** WC Cylinder (Privacy)
- **Body Length:** 72mm (36mm A Side / 36mm B Side Turn)
- **Mechanism:** 5-pin locking system (EVVA A5)
- **Cam Rotation:** 180° (3 o'clock to 9 o'clock only)
- **Fire Resistance:** 30 minutes to 821°C
- **Keys Supplied:** 3
- **Finishes:** Polished Brass or Nickel Plated (please choose from the options below)
- **Manufacturer References:** KDZ 36-K36 WC / OKZ 36-K36 WC (please choose from the options below)

Key Features

- **Emergency Access:** External red/white slot-operated turn allows quick emergency override from the outside using a coin or tool.
- **Privacy Control:** Internal thumbturn provides easy locking for bathrooms, WCs, and public toilets.
- **Robust Mechanism:** Built on the reliable EVVA A5 5-pin system for durable, long-term performance.
- **Fire Rated:** Tested for 30-minute fire resistance up to 821°C.
- **Complete Kit:** Supplied ready to fit with a connecting screw and three keys included.
- **Customisable Options:** Contact us for optional upgrades including Pre-Determined Break Points (PBP) and custom key numbering (TXT).

Variant Specifications And Pricing

Image	Part Number	Ex VAT	Inc VAT	Attributes / Specs
	L9686	£93.30	£111.96	<p>A Side: 36mm B Side: 36mm (Turn) Barcode: 5055120640143 Body Length: 72mm Brand: Evva Cylinder Kitemark: No Cylinder Profile: Euro Cylinder Type: WC Cylinder Finish: Polished Brass Keys Supplied: 3 Length: 72mm Manufacturer Reference: OKZ 36-K36 WC Mechanism: Thumbturn Packaging: Boxed Secured By Design: No Snap Resistant: No Sold Secure: No Weight: 338g</p>
	L9687	£93.30	£111.96	<p>A Side: 36mm B Side: 36mm (Turn) Barcode: 5055120640129 Body Length: 72mm Brand: Evva Cylinder Kitemark: No Cylinder Profile: Euro Cylinder Type: WC Cylinder Finish: Nickel Plated Keys Supplied: 3 Length: 72mm Manufacturer Reference: KDZ 36-K36 WC Mechanism: Thumbturn Packaging: Boxed Secured By Design: No Snap Resistant: No Sold Secure: No Weight: 338g</p>

Brand Profile

Evva



EVVA is an Austrian, **family-owned** security manufacturer based in **Vienna**, specialising in high-end **mechanical and electronic locking systems** for everything from homes to large, complex master-keyed organisations. The company was **founded in Vienna in 1919**, and it still runs **research, development, and production** from its Vienna headquarters, exporting globally.

In the trade/spec world, EVVA's reputation is built on **serious key control** and **master key system engineering**—locks designed not just to resist attack, but to keep access hierarchies manageable at scale (offices, hospitals, residential complexes, universities, etc.).

A couple of EVVA's standout mechanical platforms get referenced constantly:

- **ICS (Inner Code System)** – a reversible key system aimed at **highly complex master key structures**, with EVVA citing long patent protection (into the 2030s, depending on jurisdiction).
- **MCS (Magnetic Code System)** – EVVA positions this as a top-tier system for sophisticated master keying, with a strong anti-copying story (including resistance to modern replication methods).

They also explicitly brand themselves around innovation: EVVA talks about holding **200+ patents** and frames its history as “start-up energy since 1919” (which is an absolutely deranged sentence for a century-old lock company, but I respect the audacity).