

ERA 6 Pin Euro Key & Turn Cylinder

Key & Turn Euro · ERA · 2 variants

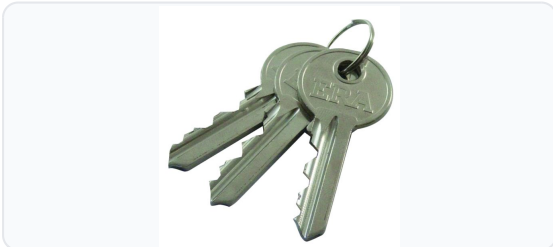
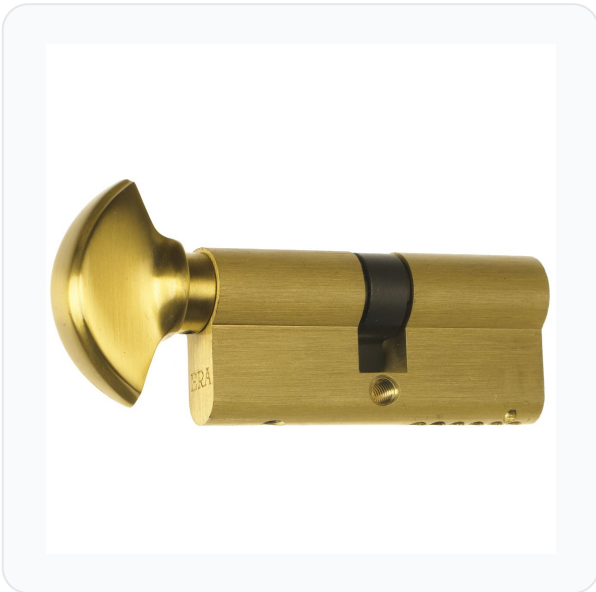
PRICING

From £35.61 ex VAT

£42.73 inc VAT

2 variants available
VAT 20.00%

Product Imagery



Specification Summary

Brand	ERA
Product type	Key & Turn Euro

TAGS

Is Cylinder

Product Description

The ERA 6 Pin Euro Key & Turn Cylinder is a reliable security solution designed to complement cylinder-operated mortice locks and multi-point locking systems. It is ideal for locations requiring controlled access from the outside via a key, and swift, keyless egress from the inside using the thumbturn.

This cylinder is an excellent choice for replacing existing door locks with minimal fuss, requiring no major changes to your current door fittings. It features a robust 6-pin mechanism to provide dependable everyday security.

This product is available in a choice of finishes, weights, barcodes, and manufacturer references. Please choose your preferred options from the selection below.

Technical Specifications

- **Cylinder Profile:** Euro
- **Cylinder Type:** Key & Turn (Thumbturn)
- **Overall Length:** 70mm (35mm / T35mm)
- **Cylinder Size with Cam:** 30/10/T30
- **Mechanism:** 6 Pin
- **Keys Supplied:** 2
- **Keying:** Keyed to differ (in-house key cutting and keyed-alike options available)
- **Fire Tested:** Grade 0
- **Finishes:** Polished Brass or Satin Chrome (please select from the options below)
- **Manufacturer Reference:** 4103 51 or 4104 31 (please select from the options below)
- **Barcode:** 5011988001182 or 5011988020701 (please select from the options below)
- **Weight:** 293g to 310g (please select from the options below)

Key Features

- **Controlled Access:** Provides secure key entry from the outside and quick, convenient thumbturn escape from the inside.
- **Easy Retrofitting:** Ideal for replacing most existing Euro cylinders with minimal change to existing door fittings.
- **Versatile Compatibility:** Suits all standard Euro-type mortice locks and multi-point locks.
- **6-Pin Security:** Features a reliable 6-pin mechanism for dependable locking performance.
- **Choice of Finishes:** Available in Polished Brass and Satin Chrome to match your existing door hardware.

Variant Specifications And Pricing



Image	Part Number	Ex VAT	Inc VAT	Attributes / Specs
	L14139	£35.61	£42.73	<p> A Side: 35mm B Side: 35mm (Turn) Barcode: 5011988020701 Body Length: 70mm Brand: ERA Cylinder Kitemark: No Cylinder Profile: Euro Cylinder Size Overall: 35/T35 Cylinder Size With Cam: 30/10/T30 Cylinder System: ERA 6 Pin Cylinder Type: Key & Turn Euro Finish: Polished Brass Fire Tested: Grade 0 Key Cutting: In-House Keyed: Keyed To Differ Keying - KA: In-House Keys Supplied: 2 Length: 70mm Manufacturer Reference: 4104 31 Mechanism: 6 Pin Packaging: Boxed Secured By Design: No Snap Resistant: No Sold Secure: No Weight: 310g </p>

Image	Part Number	Ex VAT	Inc VAT	Attributes / Specs
	L14140	£35.61	£42.73	<p> A Side: 35mm B Side: 35mm (Turn) Barcode: 5011988001182 Body Length: 70mm Brand: ERA Cylinder Kitemark: No Cylinder Profile: Euro Cylinder Size Overall: 35/T35 Cylinder Size With Cam: 30/10/T30 Cylinder System: ERA 6 Pin Cylinder Type: Key & Turn Euro Finish: Satin Chrome Fire Tested: Grade 0 Key Cutting: In-House Keyed: Keyed To Differ Keying - KA: In-House Keys Supplied: 2 Length: 70mm Manufacturer Reference: 4103 51 Mechanism: 6 Pin Packaging: Boxed Secured By Design: No Snap Resistant: No Sold Secure: No Weight: 293g </p>

Brand Profile

ERA



ERA (often seen as **ERA Home Security**) is one of the long-standing names in UK locking and hardware, rooted in the **West Midlands** and heavily tied to the **door & window** trade. ERA traces its origins to **1838**, when **John Reynolds** started a locksmith business in **Willenhall**—a town that’s basically the spiritual capital of British lockmaking.

These days ERA positions itself as a “home security expert” that **designs, develops, manufactures, and distributes** a broad range of products for the residential building and home improvement market—spanning **cylinders and door hardware, window hardware, smart/security products**, and associated ironmongery ranges (including brands like **Crompton** under the ERA umbrella).

On the corporate side, ERA was historically part of **Tyman plc** (you’ll see that referenced in older deal/industry material). More recently, ERA states directly that it is **now part of Quanex** (NYSE: NX) following Quanex’s acquisition of Tyman.