

DORMAKABA Series 1000 1041B Knob Operated Digital Lock With Key Override & Passage Set

1000 Series · dormakaba · 4 variants

PRICING

From £815.91 ex VAT

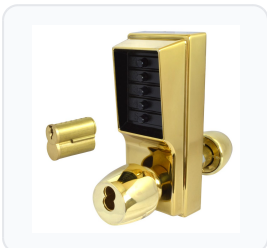
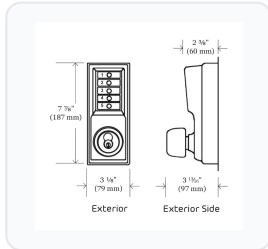
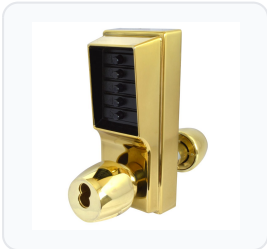
£979.09 inc VAT

4 variants available

VAT 20.00%

Range: £815.91 - £853.33 ex VAT

Product Imagery



Specification Summary

Brand dormakaba

Product type 1000 Series

Product Description

The dormakaba Simplex 1000 Series 1041B is a heavy-duty, fully mechanical digital lock that provides a robust keyless access control solution without the need for batteries or wiring. Featuring a durable knob-operated design, this lock is ideal for high-traffic commercial, public, and residential doors.

This model includes a convenient thumbturn-activated free passage set mode, allowing unrestricted entry when needed - perfect for periods of frequent use. It also features a key override for emergency access. The lock is fully reversible on-site, making it suitable for both left and right-handed doors, and can be easily programmed with a single access code directly via the vandal-resistant metal keypad without removing the unit from the door.

This lock is available in multiple finishes, cylinder configurations, and manufacturer references to suit your requirements. Please select your preferred finish, key override option, and manufacturer reference from the choices below.

Technical Specifications

- **Brand:** dormakaba
- **Series:** 1000 Series (1041B)
- **Backset:** 70mm
- **Case Depth Required:** 110mm
- **Door Thickness:** 35mm to 57mm
- **Handing:** Reversible
- **Code Length:** 1 to 5 digits
- **Number of Codes:** 1
- **Combinations:** 1,000+
- **Key Override:** Yes (available with or without cylinder - please select from the options below)
- **Keys Supplied:** 0 or 2 (depending on option chosen)
- **Latch:** 70mm Standard
- **Passage Set:** Yes (key or thumbturn)
- **Weather Resistant:** Yes
- **Finish:** Polished Brass or Satin Chrome (please select from the options below)
- **Manufacturer Reference:** 1041B-03 or 1041B-26D (please select from the options below)
- **Notes:** Cylinder supplied or supplied without cylinder (please select from the options below)
- **Guarantee:** 3 Year

Key Features

- Fully mechanical operation - eliminates the need for batteries or wiring
- Key override feature for emergency access
- Passage set mode allows free access without entering a code
- Heavy-duty, weather-resistant lock housing with solid metal pushbuttons
- Simple on-door programming via the 5-button keypad
- Reversible design to suit both left and right-handed doors
- Supports a single, easily changeable access code of 1 to 5 digits

Variant Specifications And Pricing

Image	Part Number	Ex VAT	Inc VAT	Attributes / Specs
	4917	£815.91	£979.09	<p> Backset: 70mm Barcode: 3644880116 Brand: dormakaba Buttons: 5 Case Depth Required: 110mm Code Length: 1 To 5 Digits Codes: 1 Combination: 1,000+ Door Thickness: 35mm to 57mm Finish: Satin Chrome Guarantee: 3 Year Handed: Reversible Holdback: No Key Override: Yes Keys Supplied: 2 Latch: 70mm Standard Manufacturer Reference: 1041B-26D Notes: Cylinder supplied Operation Inside: Knobset Free Exit Operation Outside: Knobset On Entry Of Code Or By Key Pack Quantity: 1 Packaging: Boxed Passage Set: Yes (key or thumbturn) Weather Resistant: Yes Weight: 3.6Kg Width: 79mm </p>

Image	Part Number	Ex VAT	Inc VAT	Attributes / Specs
	L10349	£853.33	£1024.00	<p> Backset: 70mm Barcode: 5055120655932 Brand: dormakaba Buttons: 5 Case Depth Required: 110mm Code Length: 1 To 5 Digits Codes: 1 Combination: 1,000+ Door Thickness: 35mm to 57mm Finish: Polished Brass Guarantee: 3 Year Handed: Reversible Holdback: No Key Override: Yes (Cylinder Purchased Separately) Keys Supplied: 0 Latch: 70mm Standard Manufacturer Reference: 1041B-03 Notes: Supplied Without Cylinder Operation Inside: Knobset Free Exit Operation Outside: Knobset On Entry Of Code Or By Key Pack Quantity: 1 Packaging: Boxed Passage Set: Yes (key or thumbturn) Weather Resistant: Yes Weight: 3.6Kg Width: 79mm </p>



Image	Part Number	Ex VAT	Inc VAT	Attributes / Specs
	L2934	£853.33	£1024.00	<p> Backset: 70mm Barcode: 3644880114 Brand: dormakaba Buttons: 5 Case Depth Required: 110mm Code Length: 1 To 5 Digits Codes: 1 Combination: 1,000+ Door Thickness: 35mm to 57mm Finish: Polished Brass Guarantee: 3 Year Handed: Reversible Holdback: No Key Override: Yes Keys Supplied: 2 Latch: 70mm Standard Manufacturer Reference: 1041B-03 Notes: Cylinder supplied Operation Inside: Knobset Free Exit Operation Outside: Knobset On Entry Of Code Or By Key Pack Quantity: 1 Packaging: Boxed Passage Set: Yes (key or thumbturn) Weather Resistant: Yes Weight: 3.6Kg Width: 79mm </p>

Image	Part Number	Ex VAT	Inc VAT	Attributes / Specs
	L3914	£815.91	£979.09	<p> Backset: 70mm Barcode: 5055120656045 Brand: dormakaba Buttons: 5 Case Depth Required: 110mm Code Length: 1 To 5 Digits Codes: 1 Combination: 1,000+ Door Thickness: 35mm to 57mm Finish: Satin Chrome Guarantee: 3 Year Handed: Reversible Holdback: No Key Override: Yes (Cylinder Purchased Separately) Keys Supplied: 0 Latch: 70mm Standard Manufacturer Reference: 1041B-26D Notes: Supplied Without Cylinder Operation Inside: Knobset Free Exit Operation Outside: Knobset On Entry Of Code Or By Key Pack Quantity: 1 Packaging: Boxed Passage Set: Yes (key or thumbturn) Weather Resistant: Yes Weight: 3.6Kg Width: 79mm </p>

Brand Profile

dormakaba



dormakaba is a Swiss-headquartered global access-solutions company that builds the stuff that makes buildings actually *work*: **door hardware, door closers, automatic entrances, electronic access control, and keying/locking systems** across commercial, residential, and institutional sites. The group is based in **Rümlang (Zurich), Switzerland** and sells into **50+ countries** with a large installed base in doors, hotels, airports, offices, and public buildings.

The modern company was created through the **merger of Germany's dorma and Switzerland's Kaba**, finalized in **September 2015** (initially branded "dorma+kaba," later standardized as **dormakaba**). That merger fused two long-running lineages: **DORMA (founded 1908 in Ennepetal, Germany)** with deep door-technology roots, and **Kaba** with a long history in locking/identification (origins going back to the 19th century in Zurich).

What dormakaba is known for in the trade/spec world is the "whole doorway" approach:

- **Door hardware + control** (closers, floor springs, related hardware)
- **Entrance systems** (automatic doors, turnstiles/personnel gates depending on market)
- **Access control & identity** (credentials, electronic locking, and management layers)

Scale-wise, dormakaba reported **net sales of CHF 2.87bn** for **FY 2024/25** and **~15k employees** (15,346 cited), reflecting a genuinely large global footprint.