

DORMAKABA 8066 Double Action Top Centre Complete Unit

Floor · dormakaba · 1 variant

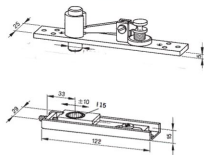
PRICING

From £98.53 ex VAT

£118.24 inc VAT

1 variant available
VAT 20.00%

Product Imagery



Specification Summary

Brand dormakaba

Product type Floor

Product Description

The dormakaba 8066 Double Action Top Centre is a heavy-duty complete unit designed for use with timber doors. It is specifically engineered to work seamlessly with the dormakaba BTS concealed floor spring range, particularly the BTS80.

This complete set includes both the frame portion and the door portion. The frame portion features an adjustable pin, allowing it to accommodate deep profiles of up to 16mm. The door portion is equipped with a high-quality needle bearing to ensure smooth, reliable double-action operation.

Constructed from robust steel, this top centre is non-handed (fully reversible) and capable of supporting heavy doors weighing up to 300kg. It provides a durable and discreet pivot solution for demanding commercial and residential timber door installations.


Technical Specifications

- **Manufacturer:** dormakaba
- **Model:** 8066
- **Material:** Steel
- **Maximum Door Weight:** 300kg
- **Handing:** Non-handed (reversible)
- **Compatibility:** Suitable for timber doors; designed for use with dormakaba BTS floor springs (such as BTS80)
- **Adjustability:** Frame portion pin adjustable for deep profiles up to 16mm
- **Bearing Type:** Needle bearing in the door portion
- **Weight:** 600g

Key Features

- **Complete Unit:** Includes both the frame portion and the door portion for a complete installation.
- **Heavy-Duty Capacity:** Supports robust timber doors weighing up to 300kg.
- **Smooth Operation:** Equipped with a needle bearing to ensure reliable double-action movement.
- **Flexible Fitting:** Features an adjustable pin to accommodate deep frame profiles up to 16mm.
- **Non-Handed Design:** Reversible configuration makes it suitable for both left and right-handed doors.

Variant Specifications And Pricing

Image	Part Number	Ex VAT	Inc VAT	Attributes / Specs
	L30613	£98.53	£118.24	Barcode: 4021226007570 Brand: dormakaba Handed: Reversible Manufacturer Reference: 8066 Max Door Weight: 300Kg Pack Quantity: 1 Suits Product: Dormakaba BTS Weight: 600g

Brand Profile

dormakaba



dormakaba is a Swiss-headquartered global access-solutions company that builds the stuff that makes buildings actually *work*: **door hardware, door closers, automatic entrances, electronic access control, and keying/locking systems** across commercial, residential, and institutional sites. The group is based in **Rümlang (Zurich), Switzerland** and sells into **50+ countries** with a large installed base in doors, hotels, airports, offices, and public buildings.

The modern company was created through the **merger of Germany's dorma and Switzerland's Kaba**, finalized in **September 2015** (initially branded "dorma+kaba," later standardized as **dormakaba**). That merger fused two long-running lineages: **DORMA (founded 1908 in Ennepetal, Germany)** with deep door-technology roots, and **Kaba** with a long history in locking/identification (origins going back to the 19th century in Zurich).

What dormakaba is known for in the trade/spec world is the "whole doorway" approach:

- **Door hardware + control** (closers, floor springs, related hardware)
- **Entrance systems** (automatic doors, turnstiles/personnel gates depending on market)
- **Access control & identity** (credentials, electronic locking, and management layers)

Scale-wise, dormakaba reported **net sales of CHF 2.87bn** for **FY 2024/25** and **~15k employees** (15,346 cited), reflecting a genuinely large global footprint.