

# DORMAKABA 8021 Double Action Door Strap

Floor · dormakaba · 1 variant

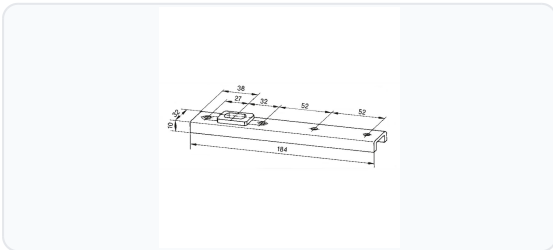
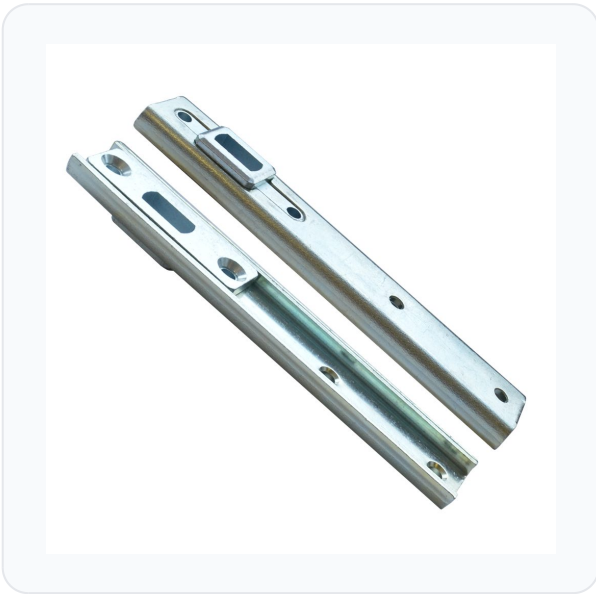
PRICING

**From £26.72 ex VAT**

£32.06 inc VAT

1 variant available  
VAT 20.00%

## Product Imagery



## Specification Summary

Brand dormakaba

Product type Floor

## Product Description

The Dormakaba 8021 Double Action Door Strap is a high-quality bottom strap designed for use with the Dormakaba BTS series of floor springs, specifically the BTS80 concealed floor spring. Engineered for double-action doors, this strap ensures smooth and reliable operation in both directions.

Constructed from robust steel with a zinc-plated finish, this door strap offers excellent durability and corrosion resistance, making it suitable for demanding commercial and residential environments. It is non-handed (fully reversible), allowing for easy installation on both left and right-handed doors. With a maximum weight capacity of up to 100kg, it provides strong and dependable support for standard to heavy-duty doors.

Whether you are installing a new floor spring system or replacing an existing component, the Dormakaba 8021 offers the precision engineering and durability expected from a leading brand in architectural hardware.


## Technical Specifications

- **Brand:** dormakaba
- **Manufacturer Reference:** 8021
- **Material:** Steel
- **Finish:** Zinc Plated
- **Handing:** Reversible (Non-handed)
- **Maximum Door Weight:** 100kg
- **Compatibility:** Designed for use with Dormakaba BTS floor springs (specifically BTS80)
- **Length:** 18.4cm
- **Width:** 32mm
- **Weight:** 300g
- **Pack Quantity:** 1

## Key Features

- **Double Action Operation:** Engineered specifically for doors that swing in both directions.
- **Robust Construction:** Made from high-quality steel with a zinc-plated finish for enhanced durability and corrosion resistance.
- **Non-Handed Design:** Reversible configuration makes it suitable for both left and right-handed doors, simplifying installation.
- **High Weight Capacity:** Supports doors weighing up to 100kg.
- **Seamless Compatibility:** Engineered to work perfectly with Dormakaba BTS series concealed floor springs.

**Variant Specifications And Pricing**

Image	Part Number	Ex VAT	Inc VAT	Attributes / Specs
	L30615	£26.72	£32.06	<p><b>Barcode:</b> 4021226005880  <b>Brand:</b> dormakaba  <b>Finish:</b> Zinc Plated  <b>Handed:</b> Reversible  <b>Length:</b> 18.4cm  <b>Manufacturer Reference:</b> 8021  <b>Material:</b> Steel  <b>Max Door Weight:</b> 100Kg  <b>Pack Quantity:</b> 1  <b>Suits Product:</b> Dormakaba BTS  <b>Weight:</b> 300g  <b>Width:</b> 32mm</p>

## Brand Profile

dormakaba



**dormakaba** is a Swiss-headquartered global access-solutions company that builds the stuff that makes buildings actually *work*: **door hardware, door closers, automatic entrances, electronic access control, and keying/locking systems** across commercial, residential, and institutional sites. The group is based in **Rümlang (Zurich), Switzerland** and sells into **50+ countries** with a large installed base in doors, hotels, airports, offices, and public buildings.

The modern company was created through the **merger of Germany's dorma and Switzerland's Kaba**, finalized in **September 2015** (initially branded "dorma+kaba," later standardized as **dormakaba**). That merger fused two long-running lineages: **DORMA (founded 1908 in Ennepetal, Germany)** with deep door-technology roots, and **Kaba** with a long history in locking/identification (origins going back to the 19th century in Zurich).

What dormakaba is known for in the trade/spec world is the "whole doorway" approach:

- **Door hardware + control** (closers, floor springs, related hardware)
- **Entrance systems** (automatic doors, turnstiles/personnel gates depending on market)
- **Access control & identity** (credentials, electronic locking, and management layers)

Scale-wise, dormakaba reported **net sales of CHF 2.87bn** for **FY 2024/25** and **~15k employees** (15,346 cited), reflecting a genuinely large global footprint.