

DORMAKABA 7100 Series 7106 Digital Lock Rim Deadlatch

7100 Series · dormakaba · 2 variants

PRICING

From £270.72 ex VAT

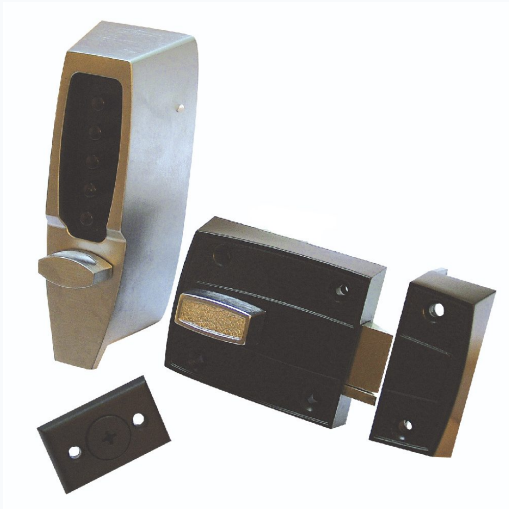
£324.86 inc VAT

2 variants available

VAT 20.00%

Range: £270.72 - £311.10 ex VAT

Product Imagery



Specification Summary

Brand dormakaba

Product type 7100 Series

Product Description

The dormakaba Simplex 7100 Series 7106 is a fully mechanical digital lock solution designed for light commercial and residential applications. Operating entirely without batteries or wiring, this robust lock eliminates the maintenance and costs associated with frequent battery replacements. It features a 5-button keypad that supports a single, easily managed access code of 1 to 5 digits, which can be changed quickly on-site without removing the lock

from the door.

Equipped with a medium-duty rim deadlatch, the 7106 model automatically relocks every time the door closes and includes a convenient latch holdback function. It provides free egress from the inside via a thumbturn and code-operated entry from the outside. The unit is non-handed and field-reversible, making it suitable for both left and right-handed timber doors. It also features a protective clutch mechanism to safeguard the lock against forced entry.

This digital lock is available in multiple finishes, including Black and Satin Chrome, with corresponding manufacturer references and barcodes. Please choose your preferred finish and option from the selection below.

Technical Specifications

- **Brand:** dormakaba
- **Series:** Simplex 7100 Series (Model 7106)
- **Backset:** 60mm
- **Case Depth Required:** 98mm
- **Door Thickness:** 35mm to 57mm
- **Latch Type:** Medium-duty rim deadlatch
- **Keypad:** 5 solid metal buttons
- **Code Length:** 1 to 5 digits
- **Number of Codes:** 1
- **Combinations:** 1,000+
- **Handing:** Reversible (non-handed)
- **Holdback:** Yes
- **Key Override:** No
- **Weather Resistant:** Yes
- **Operation Outside:** Thumbturn on code entry
- **Operation Inside:** Thumbturn free exit
- **Finishes Available:** Black or Satin Chrome (please select from the options below)
- **Manufacturer References:** 7106-19 or 7106-26D (please select from the options below)
- **Barcodes:** 887838707314 or 887838707321 (please select from the options below)
- **Weight:** 1.88kg
- **Width:** 56mm
- **Guarantee:** 1 Year

Key Features

- **Fully Mechanical Operation:** No batteries or wiring required, eliminating battery replacement costs.
- **Vandal Resistant Keypad:** Solid metal pushbuttons and robust metal cast front housing for durability.
- **Protective Clutch Mechanism:** Safeguards the lock against forced entry attempts.
- **Fast Code Changes:** Easily program a new single access code via the keypad without removing the lock from the door.
- **Automatic Relocking:** Latch automatically relocks whenever the door closes to maintain security.
- **Latch Holdback Function:** Allows the latch to be held back for free passage when security is not required.
- **Weather Resistant:** Built to withstand external conditions, making it suitable for both indoor and outdoor use.
- **Reversible Handing:** Non-handed design can be easily reversed on-site to suit left or right-handed doors.

Variant Specifications And Pricing

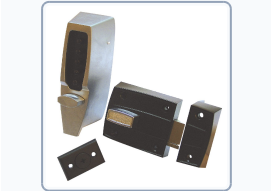

Image	Part Number	Ex VAT	Inc VAT	Attributes / Specs
	L4442	£270.72	£324.86	<p>Backset: 60mm Barcode: 887838707321 Brand: dormakaba Buttons: 5 Case Depth Required: 98mm Code Length: 1 To 5 Digits Codes: 1 Combination: 1,000+ Door Thickness: 35mm to 57mm Finish: Satin Chrome Guarantee: 1 Year Handed: Reversible Holdback: Yes Key Override: No Latch: Medium Duty Rim Deadlatch Manufacturer Reference: 7106-26D Operation Inside: Thumbturn Free Exit Operation Outside: Thumbturn On Code Entry Pack Quantity: 1 Packaging: Boxed Passage Set: No Weather Resistant: Yes Weight: 1.88Kg Width: 56mm</p>

Image	Part Number	Ex VAT	Inc VAT	Attributes / Specs
	L5898	£311.10	£373.32	<p> Backset: 60mm Barcode: 887838707314 Brand: dormakaba Buttons: 5 Case Depth Required: 98mm Code Length: 1 To 5 Digits Codes: 1 Combination: 1,000+ Door Thickness: 35mm to 57mm Finish: Black Guarantee: 1 Year Handed: Reversible Holdback: Yes Key Override: No Latch: Medium Duty Rim Deadlatch Manufacturer Reference: 7106-19 Operation Inside: Thumbturn Free Exit Operation Outside: Thumbturn On Code Entry Pack Quantity: 1 Packaging: Boxed Passage Set: No Weather Resistant: Yes Weight: 1.88Kg Width: 56mm </p>

Brand Profile

dormakaba



dormakaba is a Swiss-headquartered global access-solutions company that builds the stuff that makes buildings actually *work*: **door hardware, door closers, automatic entrances, electronic access control, and keying/locking systems** across commercial, residential, and institutional sites. The group is based in **Rümlang (Zurich), Switzerland** and sells into **50+ countries** with a large installed base in doors, hotels, airports, offices, and public buildings.

The modern company was created through the **merger of Germany's dorma and Switzerland's Kaba**, finalized in **September 2015** (initially branded "dorma+kaba," later standardized as **dormakaba**). That merger fused two long-running lineages: **DORMA (founded 1908 in Ennepetal, Germany)** with deep door-technology roots, and **Kaba** with a long history in locking/identification (origins going back to the 19th century in Zurich).

What dormakaba is known for in the trade/spec world is the "whole doorway" approach:

- **Door hardware + control** (closers, floor springs, related hardware)
- **Entrance systems** (automatic doors, turnstiles/personnel gates depending on market)
- **Access control & identity** (credentials, electronic locking, and management layers)

Scale-wise, dormakaba reported **net sales of CHF 2.87bn** for **FY 2024/25** and **~15k employees** (15,346 cited), reflecting a genuinely large global footprint.