

CODELOCKS CL610 Series Digital Lock With Tubular Latch

CL600 Series · Codelocks · 4 variants

PRICING

From £299.73 ex VAT

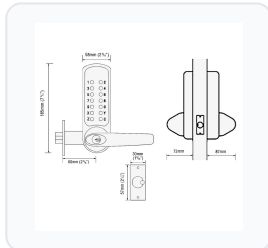
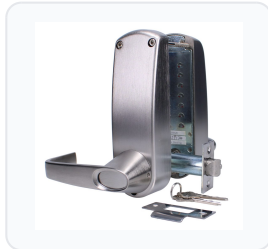
£359.68 inc VAT

4 variants available

VAT 20.00%

Range: £299.73 - £409.05 ex VAT

Product Imagery



Specification Summary

Brand Codelocks

Product type CL600 Series

Product Description

The Codelocks CL610 Series (including the CL610 and CL615 models) represents a range of heavy-duty mechanical digital locks designed for high-traffic commercial and domestic environments. These robust locks feature Codelocks' innovative 'Quick Code' system, allowing users to change the entry code directly on the door in seconds without removing the lock.

This versatile series is available in multiple configurations to suit your specific security and access requirements. You can choose whether you require a passage set (code-free access) or a standard non-passage setup, and select between fire-tested (BS EN 1634-1 compliant) or non-fire-tested models. The product weight also varies between 3.499kg and 3.8kg depending on the selected kit. With various manufacturer references, barcodes, and kit notes available, please choose from the options below to find the perfect configuration for your door.

Each lock is equipped with a 60mm standard tubular latch, a key override for emergency access, and a dual-lever handle setup. The outside lever retracts the latch after entering a correct 4 to 6-digit code, while the inside lever provides free exit at all times. Suitable for both internal and external doors, these non-handed, reversible units are built to withstand heavy use.

Technical Specifications

- **Brand:** Codelocks
- **Backset:** 60mm
- **Case Depth Required:** 85mm
- **Door Thickness:** 35mm to 65mm
- **Finish:** Stainless Steel
- **Key Override:** Yes (2 keys supplied)
- **Code Length:** 4 to 6 digits
- **Combinations:** 8,000+
- **Buttons:** 14
- **Operation Outside:** Lever handle on entry of code
- **Operation Inside:** Lever handle free exit
- **Weather Resistant:** Yes
- **Standards:** Tested to Grade 2 - ANSI - A156.2 (BS EN 1634-1 for fire-tested variants)

Key Features

- **On-Door Code Change:** Quick Code system allows code changes in seconds without removing the lock from the door
- **Heavy-Duty Design:** Robust construction suitable for high-traffic internal and external doors
- **Configurable Options:** Available with or without passage set (code-free access) and fire testing - please choose from the options below
- **Key Override:** Emergency key override function for peace of mind (2 keys included)
- **Non-Handed:** Reversible lever handles suitable for both left and right-handed doors
- **Free Exit:** Inside lever handle allows quick and easy egress at all times

Variant Specifications And Pricing


Image	Part Number	Ex VAT	Inc VAT	Attributes / Specs
	L17069	£409.05	£490.86	<p>Backset: 60mm Barcode: 5031913002640 Brand: Codelocks Buttons: 14 Case Depth Required: 85mm Code Length: 4 To 6 Digits Codes: 1 Combination: 8,000+ Door Thickness: 35mm to 65mm Finish: Stainless Steel Fire Tested: No Guarantee: Limited Lifetime Handed: Reversible Holdback: No Key Override: Yes Keys Supplied: 2 Latch: 60mm Standard Manufacturer Reference: 610BS Notes: To achieve the fire rating these digital locks must be fitted with the appropriate intumescent pack, please see associated products Operation Inside: Lever Handle Free Exit Operation Outside: Lever Handle On Entry Of Code Pack Quantity: 1 Packaging: Boxed Passage Set: No Weather Resistant: Yes Weight: 3.8Kg Width: 58mm</p>


Image	Part Number	Ex VAT	Inc VAT	Attributes / Specs
	L17070	£409.05	£490.86	<p> Backset: 60mm Barcode: 5031913002695 Brand: Codelocks Buttons: 14 Case Depth Required: 85mm Code Length: 4 To 6 Digits Codes: 1 Combination: 8,000+ Door Thickness: 35mm to 65mm Finish: Stainless Steel Fire Tested: No Guarantee: Limited Lifetime Handed: Reversible Holdback: No Key Override: Yes Keys Supplied: 2 Latch: 60mm Standard Manufacturer Reference: 615BS Notes: To achieve the fire rating these digital locks must be fitted with the appropriate intumescent pack, please see associated products Operation Inside: Lever Handle Free Exit Operation Outside: Lever Handle On Entry Of Code Pack Quantity: 1 Packaging: Boxed Passage Set: Yes Weather Resistant: Yes Weight: 3.8Kg Width: 58mm </p>



Image	Part Number	Ex VAT	Inc VAT	Attributes / Specs
	L35795	£299.73	£359.68	<p> Backset: 60mm Barcode: 5031913008444 Brand: Codelocks Buttons: 14 Case Depth Required: 85mm Code Length: 4 To 6 Digits Codes: 1 Combination: 8,000+ Door Thickness: 35mm to 65mm Finish: Stainless Steel Fire Tested: Yes Guarantee: Limited Lifetime Handed: Reversible Holdback: No Key Override: Yes Keys Supplied: 2 Latch: 60mm Standard Manufacturer Reference: 0610 BS FKP Notes: Supplied complete with optional fire holdback kit Operation Inside: Lever Handle Free Exit Operation Outside: Lever Handle On Entry Of Code Pack Quantity: 1 Packaging: Boxed Passage Set: No Standards: BS EN 1634-1 Weather Resistant: Yes Weight: 3.504Kg Width: 58mm </p>

Image	Part Number	Ex VAT	Inc VAT	Attributes / Specs
	L35796	£299.73	£359.68	<p> Backset: 60mm Barcode: 5031913008451 Brand: Codelocks Buttons: 14 Case Depth Required: 85mm Code Length: 4 To 6 Digits Codes: 1 Combination: 8,000+ Door Thickness: 35mm to 65mm Finish: Stainless Steel Fire Tested: Yes Guarantee: Limited Lifetime Handed: Reversible Holdback: No Key Override: Yes Keys Supplied: 2 Latch: 60mm Standard Manufacturer Reference: 0615 BS FKP Notes: Supplied complete with optional fire holdback kit Operation Inside: Lever Handle Free Exit Operation Outside: Lever Handle On Entry Of Code Pack Quantity: 1 Packaging: Boxed Passage Set: Yes Standards: BS EN 1634-1 Weather Resistant: Yes Weight: 3.499Kg Width: 58mm </p>

Brand Profile

Codelocks



Codelocks is a UK-headquartered access-control brand specialising in **keyless push-button locks** for **doors, lockers, cabinets and furniture**—the kind of hardware that’s built to remove keys from the equation without dragging you into a full-blown wired access-control install. The company was **founded in 1991** and is based in **Newbury, Berkshire**, with a global footprint and multiple regional operations.

Their product family spans:

- **Mechanical digital locks** (purely mechanical keypad locks: no batteries, no wiring)
- **Electronic digital locks** (standalone battery-powered locks aimed at higher functionality and audit/control features)
- **Locker locks** under the **KitLock by Codelocks** name, targeting leisure, workplaces, education, and self-storage style installs

A signature differentiator is **NetCode®**: Codelocks’ system for generating **time-sensitive access codes** (think “this code works from 2pm–6pm on Tuesday” rather than “this code works until the heat death of the universe”). NetCodes can be issued through the **Codelocks Connect portal** or related tools, making it popular for short-term access in things like **self-storage, rentals, shared facilities, and managed workplaces**.

On the “serious door” end, their **CL5000** line is positioned as **heavy-duty electronic locks for high-traffic applications** and is marketed with **ANSI Grade 2** testing references - very much the “commercial door that gets slammed 400 times a day” vibe.