

BRITON 560 Series Dogging Device Kit

Accessory · Briton · 2 variants

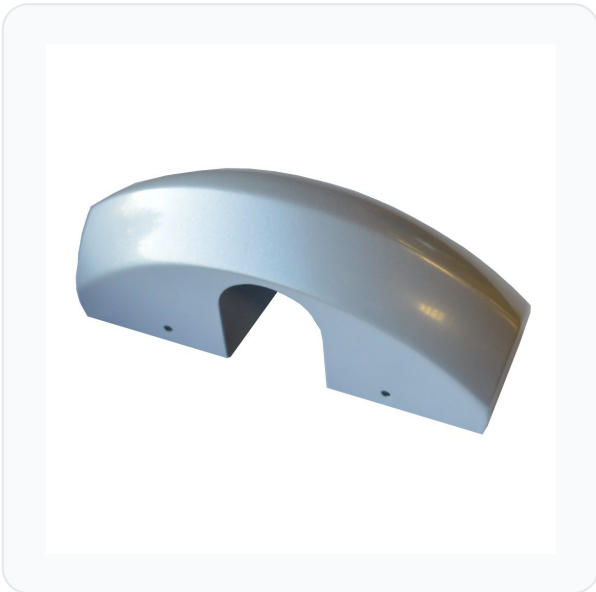
PRICING

From £76.35 ex VAT

£91.62 inc VAT

2 variants available
VAT 20.00%

Product Imagery



Specification Summary

Brand Briton

Product type Accessory

Product Description

The BRITON 560 Series Dogging Device Kit is a practical accessory designed specifically for use with Briton 560 Series panic hardware. It features a manual hold-open function operated by a key, which holds the latch in the withdrawn position. This allows for free, unrestricted access when required, making it an ideal addition for high-traffic commercial or public buildings during peak hours.

This kit is available in multiple options to suit your installation needs. You can choose between Black and Silver Enamelled finishes, with weights ranging from 200g to 300g. Please select your preferred finish, manufacturer reference, and weight from the options below.


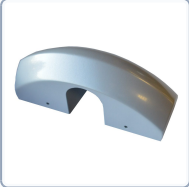
Technical Specifications

- **Brand:** Briton
- **Compatibility:** Designed to suit Briton 560 Series panic hardware
- **Finishes Available:** Black or Silver Enamelled (please choose from the options below)
- **Manufacturer References:** 566.DK.BM or 566.DK.SE (please choose from the options below)
- **Weights:** 200g or 300g (please choose from the options below)
- **Pack Quantity:** 1

Key Features

- **Hold-Open Function:** Key-operated manual hold-open function holds the latch in the withdrawn position
- **Free Access:** Allows panic exit devices to permit free, unrestricted access when required
- **Seamless Integration:** Designed specifically to match and work with Briton 560 Series exit hardware

Variant Specifications And Pricing

| Image | Part Number | Ex VAT | Inc VAT | Attributes / Specs |
|---|-------------|--------|---------|---|
|  | L31137 | £76.35 | £91.62 | Barcode: 5056240116334 Brand: Briton Finish: Black Manufacturer Reference: 566.DK.BM Pack Quantity: 1 Suits Product: Briton 560 Series Weight: 200g |
|  | L31138 | £76.35 | £91.62 | Barcode: 5056240116341 Brand: Briton Finish: Silver Enamelled Manufacturer Reference: 566.DK.SE Pack Quantity: 1 Suits Product: Briton 560 Series Weight: 300g |

Brand Profile

Briton



Briton is a long-established UK door hardware brand best known for **door controls** and **exit hardware** used in commercial buildings where reliability and fire-safety compliance actually matter. Briton markets itself as having **over 100 years** of history in the sector, with a reputation built on “highly engineered” products designed to survive constant, unglamorous punishment in busy environments.

Today, **Briton is part of Allegion** (the global security group behind multiple access and door hardware brands). In the Allegion portfolio, Briton sits as a specialist name for door control and emergency exit solutions.

What Briton is typically associated with in the trade/spec world:

- **Overhead door closers** (including their long-running “classic” closer heritage)
- **Panic and emergency exit devices** such as push bars and push pads, designed and tested to standards like **EN 1125** (panic) and **EN 179** (emergency exit) depending on application
- A broader ecosystem that now extends into related **locks, cylinders, door furniture and accessories** under the Briton hallmark

Fun bit of heritage trivia that specs people love: [sources discussing Briton’s classic door closer lineage note early Briton closers being manufactured by William Newman & Sons Ltd in Birmingham in the 1930s, and that the traditional style still shows up in places like historic properties.](#)