

ASEC Victorian Letter Plate

Letter Plate · Asec · 4 variants

PRICING

From £46.31 ex VAT

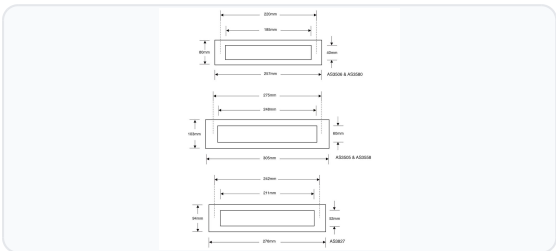
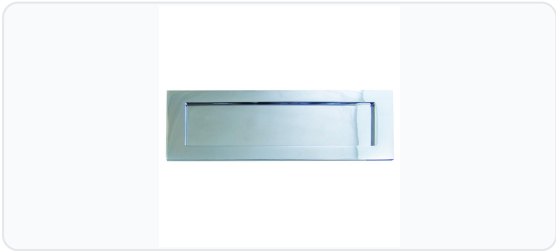
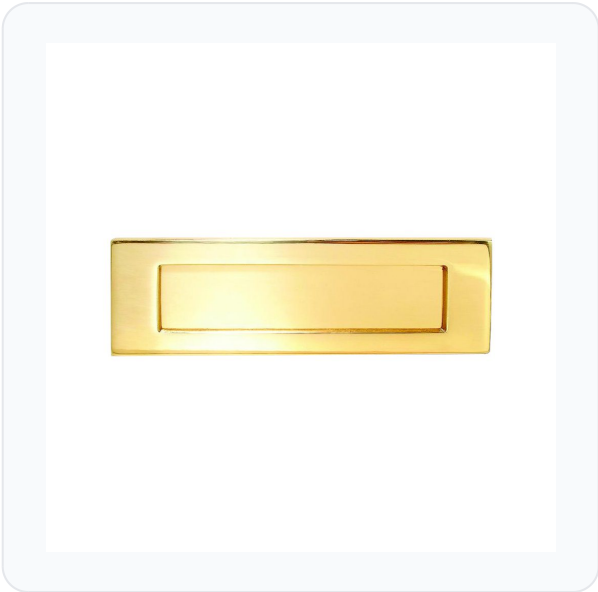
£55.57 inc VAT

4 variants available

VAT 20.00%

Range: £46.31 - £79.89 ex VAT

Product Imagery



Specification Summary

Brand Asec

Product type Letter Plate

Product Description

The Asec Victorian Letter Plate offers a classic, clean aesthetic designed to complement traditional wooden doors. Its plain, elegant design makes it an ideal choice for period properties, restoration projects, or adding a touch of timeless style to modern front doors.

This letter plate is available in a variety of sizes and finishes to suit your door's existing hardware. Choose from high-quality Polished Brass or Chrome Plated finishes. Depending on your door's requirements, you can select from overall sizes ranging from 254mm to 305mm, with bolt centres between 220mm and 248mm.

Please select your preferred finish, size, and bolt centre configuration from the options below.

Technical Specifications


- **Brand:** Asec
- **Finish:** Polished Brass or Chrome Plated (please choose from the options below)
- **Overall Size:** 254mm, 276mm, or 305mm (please choose from the options below)
- **Bolt Centres:** 220mm, 242mm, or 248mm (please choose from the options below)
- **Opening Size:** 185mm x 40mm, 211mm x 53mm, or 248mm x 60mm (please choose from the options below)
- **Application:** Designed specifically for wooden doors
- **Pack Quantity:** 1

Key Features

- Classic plain Victorian design adds a timeless look to any entrance
- Durable construction suitable for external wooden doors
- Available in multiple finishes and sizes to ensure a perfect match for your door
- Supplied as a single unit with necessary fixings

Variant Specifications And Pricing

Image	Part Number	Ex VAT	Inc VAT	Attributes / Specs
	AS3506	£46.31	£55.57	Barcode: 5036286130686 Bolt Centres: 220mm Brand: Asec Finish: Polished Brass Length: 25.4cm Manufacturer Reference: AS3506 Opening Size: 185mm x 40mm Pack Quantity: 1 Packaging: Visi Size: 254mm Weight: 500g Width: 25.7cm
	AS3558	£79.89	£95.87	Barcode: 5036286131072 Bolt Centres: 248mm Brand: Asec Finish: Chrome Plated Length: 30.5cm Manufacturer Reference: AS3558 Opening Size: 248mm x 60mm Pack Quantity: 1 Packaging: Visi Size: 305mm Weight: 750g Width: 30.5cm
	AS3580	£59.66	£71.59	Barcode: 5036286130662 Bolt Centres: 220mm Brand: Asec Finish: Chrome Plated Length: 25.4cm Manufacturer Reference: AS3580 Opening Size: 185mm x 40mm Pack Quantity: 1 Packaging: Visi Size: 254mm Weight: 520g Width: 25.7cm

Image	Part Number	Ex VAT	Inc VAT	Attributes / Specs
	AS3827	£52.55	£63.06	<p>Barcode: 5036286131874 Bolt Centres: 242mm Brand: Asec Finish: Polished Brass Length: 27.6cm Manufacturer Reference: AS3827 Opening Size: 211mm x 53mm Pack Quantity: 1 Packaging: Bagged Size: 276mm Weight: 610g Width: 27.6cm</p>

Brand Profile

Asec



ASEC is a **trade-focused security hardware brand** built around the “everyday kit” locksmiths and installers reach for, with a big emphasis on **breadth, availability, and value** rather than boutique-only spec pieces. The brand was **established in 2003** and was created specifically to **support independent retailers and security professionals** with products that “*would never become available through the large multiple retailers.*”

Where ASEC gets especially interesting (and why it tends to become a “default stock brand”) is the **scale of the range**:

- ASEC positions itself as having a portfolio of **2,000+ individual products**, described as one of the **largest ranges under a single security brand name** in the industry.
- Coverage is intentionally broad across the core trade categories: **Access Control, Architectural Hardware, Key Cutting, Locking Products, UPVC, Tools & Accessories.**

ASEC is **exclusive to Aldridge Security** (whom we distribute) in the UK trade ecosystem (Aldridge explicitly calls itself the **exclusive distributor of ASEC Security Products worldwide**). That exclusivity is a big part of the brand's identity: it keeps the range aimed at the trade channel rather than getting diluted into mass retail.