

ASEC Victorian Cylinder Pull

Cylinder Pull · Asec · 1 variant

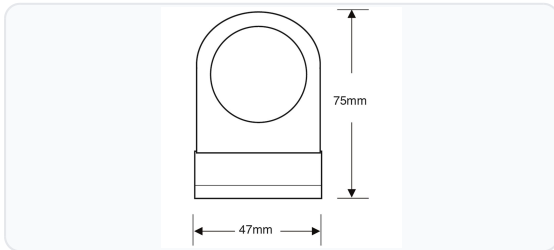
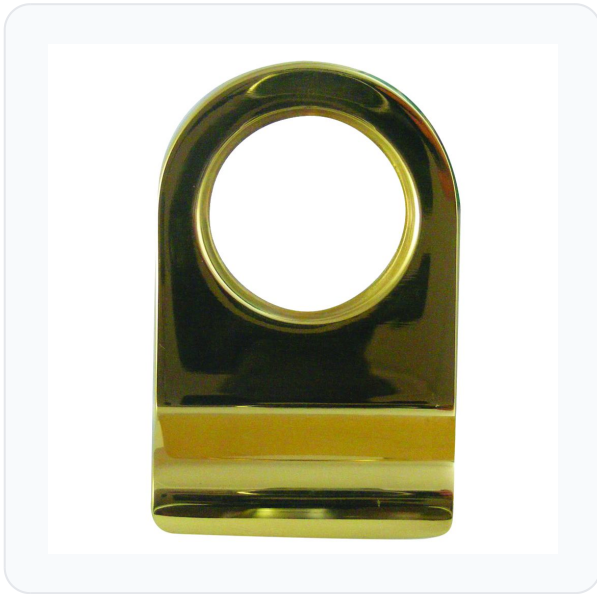
PRICING

From £15.42 ex VAT

£18.50 inc VAT

1 variant available
VAT 20.00%

Product Imagery



Specification Summary

Brand	Asec
Product type	Cylinder Pull

Product Description

The Asec Victorian Cylinder Pull is a classic and practical addition to traditional timber doors. Designed to fit neatly behind a standard UK rim cylinder, this pull provides a sturdy and convenient grip to pull your door closed from the outside, helping to prevent unnecessary strain on your key or cylinder.

Featuring a timeless, plain Victorian design, this cylinder pull is finished in high-quality polished brass to complement existing traditional door furniture and enhance your home's kerb appeal. It is an ideal accessory for front doors fitted with a standard nightlatch, offering both functional convenience and a neat, professional finish.


Technical Specifications

- **Brand:** Asec
- **Manufacturer Reference:** AS3812
- **Finish:** Polished Brass
- **Length:** 85mm
- **Width:** 43mm
- **Weight:** 60g
- **Pack Quantity:** 1
- **Packaging:** Bagged
- **Barcode:** 5036286131720

Key Features

- **Classic Victorian Design:** Plain, traditional styling that suits a wide range of classic and period properties.
- **Polished Brass Finish:** Offers a bright, clean, and attractive aesthetic to enhance front door furniture.
- **Practical Functionality:** Provides a dedicated grip to pull the door closed, protecting the cylinder and key from wear.
- **Easy Installation:** Fits directly behind a standard UK rim cylinder on timber doors.
- **Supplied Bagged:** Individually packed for protection during transit.

Variant Specifications And Pricing

Image	Part Number	Ex VAT	Inc VAT	Attributes / Specs
	AS3812	£15.42	£18.50	<p>Barcode: 5036286131720 Brand: Asec Finish: Polished Brass Length: 85mm Manufacturer Reference: AS3812 Pack Quantity: 1 Packaging: Bagged Weight: 60g Width: 43mm</p>

Brand Profile

Asec



ASEC is a **trade-focused security hardware brand** built around the “everyday kit” locksmiths and installers reach for, with a big emphasis on **breadth, availability, and value** rather than boutique-only spec pieces. The brand was **established in 2003** and was created specifically to **support independent retailers and security professionals** with products that *“would never become available through the large multiple retailers.”*

Where ASEC gets especially interesting (and why it tends to become a “default stock brand”) is the **scale of the range**:

- ASEC positions itself as having a portfolio of **2,000+ individual products**, described as one of the **largest ranges under a single security brand name** in the industry.
- Coverage is intentionally broad across the core trade categories: **Access Control, Architectural Hardware, Key Cutting, Locking Products, UPVC, Tools & Accessories.**

ASEC is **exclusive to Aldridge Security** (whom we distribute) in the UK trade ecosystem (Aldridge explicitly calls itself the **exclusive distributor of ASEC Security Products worldwide**). That exclusivity is a big part of the brand's identity: it keeps the range aimed at the trade channel rather than getting diluted into mass retail.