

ASEC Patio Push Lock

Patio Door Locks · Asec · 1 variant

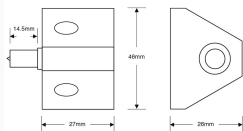
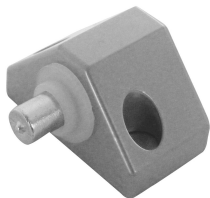
PRICING

From £89.88 ex VAT

£107.86 inc VAT

1 variant available
VAT 20.00%

Product Imagery



Specification Summary

Brand	Asec
Product type	Patio Door Locks

Product Description

The Asec Patio Push Lock is a simple yet highly effective security solution designed to fit onto the frame of your sliding patio doors and lock directly into the door itself. Offering reliable secondary security, this lock is incredibly easy to operate: simply push the bolt in to lock the door securely, and use the key to release the spring-loaded mechanism.

This versatile push lock is suitable for most types of sliding patio doors, including timber, aluminium, and uPVC frames. It is supplied in a clean white finish, complete with fixing screws for a straightforward installation. This particular model (AS3403) is keyed alike, making it ideal if you wish to operate multiple locks around your home using a single key.


Technical Specifications

- **Brand:** Asec
- **Manufacturer Reference:** AS3403
- **Finish:** White
- **Keying:** Keyed Alike
- **Packaging:** Visi-packed
- **Weight:** 152g
- **Suitable For:** Wooden, aluminium, and uPVC sliding patio doors

Key Features

- **Push-to-Lock Operation:** Quick and convenient locking by simply pushing the bolt in, with key release to unlock.
- **Versatile Application:** Designed to fit onto the frame and lock securely into the door.
- **Complete Kit:** Supplied with fixing screws for easy installation.
- **Keyed Alike Convenience:** Multiple locks can be operated with the same key, reducing the number of keys on your keyring.
- **Durable Finish:** Clean white finish to blend seamlessly with modern uPVC and painted frames.

Variant Specifications And Pricing

Image	Part Number	Ex VAT	Inc VAT	Attributes / Specs
	AS3403	£89.88	£107.86	Barcode: 5011988065191 Brand: Asec Finish: White Keyed: Keyed Alike Manufacturer Reference: AS3403 Packaging: Visi Weight: 152g

Brand Profile

Asec



ASEC is a **trade-focused security hardware brand** built around the “everyday kit” locksmiths and installers reach for, with a big emphasis on **breadth, availability, and value** rather than boutique-only spec pieces. The brand was **established in 2003** and was created specifically to **support independent retailers and security professionals** with products that *“would never become available through the large multiple retailers.”*

Where ASEC gets especially interesting (and why it tends to become a “default stock brand”) is the **scale of the range**:

- ASEC positions itself as having a portfolio of **2,000+ individual products**, described as one of the **largest ranges under a single security brand name** in the industry.
- Coverage is intentionally broad across the core trade categories: **Access Control, Architectural Hardware, Key Cutting, Locking Products, UPVC, Tools & Accessories.**

ASEC is **exclusive to Aldridge Security** (whom we distribute) in the UK trade ecosystem (Aldridge explicitly calls itself the **exclusive distributor of ASEC Security Products worldwide**). That exclusivity is a big part of the brand's identity: it keeps the range aimed at the trade channel rather than getting diluted into mass retail.