

# ASEC Oval Bullet Lock Housing

Bullet Locks · Asec · 1 variant

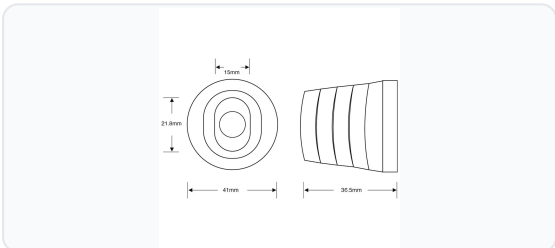
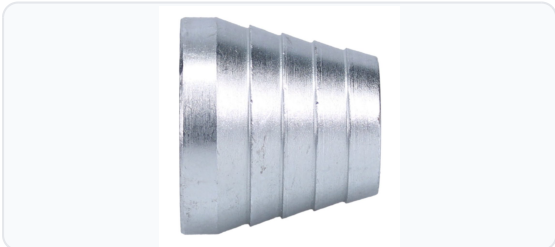
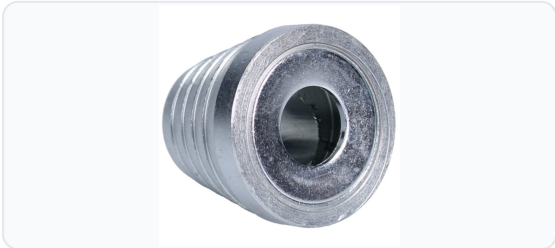
PRICING

**From £11.16 ex VAT**

£13.39 inc VAT

1 variant available  
VAT 20.00%

## Product Imagery



## Specification Summary

Brand	Asec
Product type	Bullet Locks

## Product Description

The Asec Oval Bullet Lock Housing (AS1996) is a robust, weld-on housing designed specifically to suit Asec and Viro-pattern oval bullet locks. Commonly used on roller shutters and industrial doors, this housing acts as a secure receiving point for the locking pin, providing a reinforced anchor point to prevent the shutter from being lifted.

Constructed from durable malleable steel, the housing features an oval face that ensures correct lock orientation and alignment during use. It is ideal for high-use security environments and is suitable for weld-on or bolt-through installation on shutter guide rails.

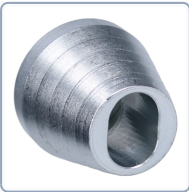
## Technical Specifications

- **Brand:** Asec
- **Manufacturer Reference:** AS1996
- **Barcode:** 5055120665405
- **Depth:** 36.5mm - 37mm
- **Diameter:** 41mm
- **Height:** 37mm
- **Weight:** 170g
- **Finish:** Satin Chrome
- **Material:** Malleable Steel

## Key Features

- **Perfect Compatibility:** Designed specifically to suit Asec and Viro-pattern oval bullet locks.
- **Secure Receiving Point:** Provides a reinforced anchor point for roller shutter locking pins to prevent unauthorised lifting.
- **Correct Alignment:** Features an oval face to ensure precise lock orientation and alignment.
- **Versatile Installation:** Suitable for weld-on or bolt-through installation on shutter guide rails.
- **Robust Build:** Malleable steel construction designed for high-use security environments.

**Variant Specifications And Pricing**

Image	Part Number	Ex VAT	Inc VAT	Attributes / Specs
	AS1996	£11.16	£13.39	<p><b>Barcode:</b> 5055120665405  <b>Brand:</b> Asec  <b>Depth:</b> 37mm  <b>Diameter:</b> 41mm  <b>Finish:</b> Satin Chrome  <b>Height:</b> 37mm  <b>Manufacturer Reference:</b> AS1996  <b>Weight:</b> 170g</p>

## Brand Profile

Asec



**ASEC** is a **trade-focused security hardware brand** built around the “everyday kit” locksmiths and installers reach for, with a big emphasis on **breadth, availability, and value** rather than boutique-only spec pieces. The brand was **established in 2003** and was created specifically to **support independent retailers and security professionals** with products that *“would never become available through the large multiple retailers.”*

Where ASEC gets especially interesting (and why it tends to become a “default stock brand”) is the **scale of the range**:

- ASEC positions itself as having a portfolio of **2,000+ individual products**, described as one of the **largest ranges under a single security brand name** in the industry.
- Coverage is intentionally broad across the core trade categories: **Access Control, Architectural Hardware, Key Cutting, Locking Products, UPVC, Tools & Accessories.**

ASEC is **exclusive to Aldridge Security** (whom we distribute) in the UK trade ecosystem (Aldridge explicitly calls itself the **exclusive distributor of ASEC Security Products worldwide**). That exclusivity is a big part of the brand's identity: it keeps the range aimed at the trade channel rather than getting diluted into mass retail.