

ASEC A8 Rim Release

Rim · Asec · 6 variants

PRICING

From £150.47 ex VAT

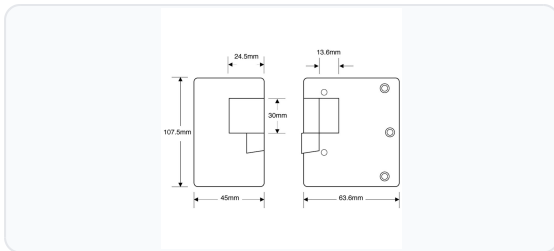
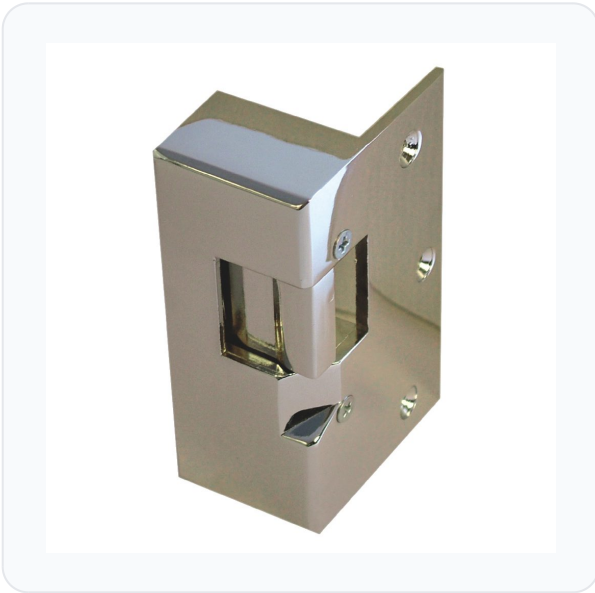
£180.56 inc VAT

6 variants available

VAT 20.00%

Range: £150.47 - £209.45 ex VAT

Product Imagery



Specification Summary

Brand Asec

Product type Rim

Product Description

The Asec A8 Rim Release is a low-duty electric strike specifically designed to work with Ingersoll SC71 and SC73 nightlatches. Designed for inward-opening doors, this rim-mounted release offers a secure and convenient way to integrate electronic access control with your existing Ingersoll lock.

To suit your specific security setup and aesthetic preferences, this release is available in a range of configurations. Please choose from the options below to select your preferred:

- **Operation:** Available in Fail Locked (fail secure) or Fail Unlocked (fail safe) modes.

- **Input Voltage & Current:** Choose between 12V AC (0.65A current consumption) or 12V DC (0.16A current consumption, continuously rated) models.
- **Finish:** Available in Polished Brass or Chrome Plated finishes to complement your door hardware.
- **Manufacturer Reference:** Select from references AS9551, AS9552, AS9553, AS9554, AS9555, or AS9556, with weights ranging from 530g to 550g.

Technical Specifications

- **Fitting:** Rim mounted
- **Compatibility:** Designed to suit Ingersoll SC71 & SC73 nightlatches
- **Body Dimensions:** 107mm (H) x 28mm (D)
- **Faceplate Dimensions:** 107mm (H) x 63mm (W)
- **Jaw Dimensions:** 30mm (H) x 15mm (W) x 14mm (D)
- **Holding Force:** 295kg (650lbs)
- **Handing:** Inward opening only
- **Input Voltage:** 12V AC or 12V DC (please choose from the options below)
- **Current Consumption:** 0.16A or 0.65A (please choose from the options below)
- **Operation:** Fail Locked or Fail Unlocked (please choose from the options below)
- **Finish:** Polished Brass or Chrome Plated (please choose from the options below)
- **Weight:** 530g to 550g (please choose from the options below)
- **Monitoring:** Non-monitored
- **Weather Resistance:** No (suitable for internal use)
- **Guarantee:** 1 Year

Key Features

- **Ingersoll Compatibility:** Specifically designed to work seamlessly with Ingersoll SC71 and SC73 nightlatches
- **Inward Opening:** Purpose-built for inward-opening doors
- **Continuous Rating:** 12V DC models are continuously rated for reliable performance
- **Flexible Operation:** Choose between fail-locked or fail-unlocked configurations to match your safety requirements
- **Aesthetic Options:** Available in polished brass or chrome plated finishes to match your door's style
- **Low Duty Design:** Ideal for standard, low-traffic internal access control applications

Variant Specifications And Pricing

Image	Part Number	Ex VAT	Inc VAT	Attributes / Specs
	AS9551	£166.05	£199.26	<p> Adjustable Jaw: No Barcode: 5055120629360 Body Depth: 28mm Body Height: 107mm Brand: Asec Current Consumption: 0.65A Faceplate Height: 107mm Faceplate Width: 63mm Finish: Polished Brass Fitting: Rim Guarantee: 1 Year Handed: Inward Opening Holding Force: 295Kg / 650Lbs Input Voltage: 12V AC Jaw Depth: 14mm Jaw Height: 30mm Jaw Width: 15mm Manufacturer Reference: AS9551 Monitored: No Notes: To Suit Ingersoll SC71 & SC73 Nightlatch Operation: Fail Locked Pack Quantity: 1 Packaging: Boxed Weather Resistant: No Weight: 530g </p>



Image	Part Number	Ex VAT	Inc VAT	Attributes / Specs
	AS9552	£150.47	£180.56	<p> Adjustable Jaw: No Barcode: 5055120629353 Body Depth: 28mm Body Height: 107mm Brand: Asec Current Consumption: 0.65A Faceplate Height: 107mm Faceplate Width: 63mm Finish: Chrome Plated Fitting: Rim Guarantee: 1 Year Handed: Inward Opening Holding Force: 295Kg / 650Lbs Input Voltage: 12V AC Jaw Depth: 14mm Jaw Height: 30mm Jaw Width: 15mm Manufacturer Reference: AS9552 Monitored: No Notes: To Suit Ingersoll SC71 & SC73 Nightlatch Operation: Fail Locked Pack Quantity: 1 Packaging: Boxed Weather Resistant: No Weight: 530g </p>

Image	Part Number	Ex VAT	Inc VAT	Attributes / Specs
	AS9553	£209.45	£251.34	<p> Adjustable Jaw: No Barcode: 5055120629346 Body Depth: 28mm Body Height: 107mm Brand: Asec Current Consumption: 0.16A Faceplate Height: 107mm Faceplate Width: 63mm Finish: Polished Brass Fitting: Rim Guarantee: 1 Year Handed: Inward Opening Holding Force: 295Kg / 650Lbs Input Voltage: 12V DC Jaw Depth: 14mm Jaw Height: 30mm Jaw Width: 15mm Manufacturer Reference: AS9553 Monitored: No Notes: To Suit Ingersoll SC71 & SC73 Nightlatch Operation: Fail Unlocked Pack Quantity: 1 Packaging: Boxed Weather Resistant: No Weight: 540g </p>

Image	Part Number	Ex VAT	Inc VAT	Attributes / Specs
	AS9554	£193.88	£232.66	<p> Adjustable Jaw: No Barcode: 5055120629339 Body Depth: 28mm Body Height: 107mm Brand: Asec Current Consumption: 0.16A Faceplate Height: 107mm Faceplate Width: 63mm Finish: Chrome Plated Fitting: Rim Guarantee: 1 Year Handed: Inward Opening Holding Force: 295Kg / 650Lbs Input Voltage: 12V DC Jaw Depth: 14mm Jaw Height: 30mm Jaw Width: 15mm Manufacturer Reference: AS9554 Monitored: No Notes: To Suit Ingersoll SC71 & SC73 Nightlatch Operation: Fail Unlocked Pack Quantity: 1 Packaging: Boxed Weather Resistant: No Weight: 530g </p>

Image	Part Number	Ex VAT	Inc VAT	Attributes / Specs
	AS9555	£189.39	£227.27	<p> Adjustable Jaw: No Barcode: 5055120629322 Body Depth: 28mm Body Height: 107mm Brand: Asec Current Consumption: 0.16A Faceplate Height: 107mm Faceplate Width: 63mm Finish: Polished Brass Fitting: Rim Guarantee: 1 Year Handed: Inward Opening Holding Force: 295Kg / 650Lbs Input Voltage: 12V DC Jaw Depth: 14mm Jaw Height: 30mm Jaw Width: 15mm Manufacturer Reference: AS9555 Monitored: No Notes: To Suit Ingersoll SC71 & SC73 Nightlatch Operation: Fail Locked Pack Quantity: 1 Packaging: Boxed Weather Resistant: No Weight: 550g </p>

Image	Part Number	Ex VAT	Inc VAT	Attributes / Specs
	AS9556	£173.78	£208.54	<p> Adjustable Jaw: No Barcode: 5055120629315 Body Depth: 28mm Body Height: 107mm Brand: Asec Current Consumption: 0.16A Faceplate Height: 107mm Faceplate Width: 63mm Finish: Chrome Plated Fitting: Rim Guarantee: 1 Year Handed: Inward Opening Holding Force: 295Kg / 650Lbs Input Voltage: 12V DC Jaw Depth: 14mm Jaw Height: 30mm Jaw Width: 15mm Manufacturer Reference: AS9556 Monitored: No Notes: To Suit Ingersoll SC71 & SC73 Nightlatch Operation: Fail Locked Pack Quantity: 1 Packaging: Boxed Weather Resistant: No Weight: 540g </p>

Brand Profile

Asec



ASEC is a **trade-focused security hardware brand** built around the “everyday kit” locksmiths and installers reach for, with a big emphasis on **breadth, availability, and value** rather than boutique-only spec pieces. The brand was **established in 2003** and was created specifically to **support independent retailers and security professionals** with products that *“would never become available through the large multiple retailers.”*

Where ASEC gets especially interesting (and why it tends to become a “default stock brand”) is the **scale of the range**:

- ASEC positions itself as having a portfolio of **2,000+ individual products**, described as one of the **largest ranges under a single security brand name** in the industry.
- Coverage is intentionally broad across the core trade categories: **Access Control, Architectural Hardware, Key Cutting, Locking Products, UPVC, Tools & Accessories.**

ASEC is **exclusive to Aldridge Security** (whom we distribute) in the UK trade ecosystem (Aldridge explicitly calls itself the **exclusive distributor of ASEC Security Products worldwide**). That exclusivity is a big part of the brand's identity: it keeps the range aimed at the trade channel rather than getting diluted into mass retail.