

# ALPRO IB1 Interlock Board

Interlocking · Alpro · 1 variant

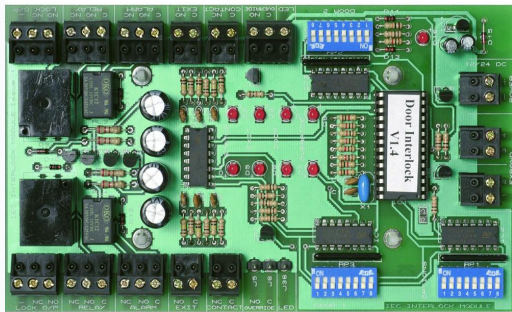
## PRICING

**From £505.34 ex VAT**

£606.41 inc VAT

1 variant available  
VAT 20.00%

## Product Imagery



## Specification Summary

Brand	Alpro
Product type	Interlocking

## Product Description

The Alpro IB1 Interlock Board is a high-performance 2-door interlock controller designed for access control systems where controlled door sequencing is essential, such as in clean rooms, airlocks, and secure lobbies. This microprocessor-controlled unit ensures that when one door is open, the other remains securely locked, preventing simultaneous opening.

Operating on a dual-voltage 12V or 24V DC input, the IB1 offers exceptional flexibility and high-load capability with a 5 Amp double-pole changeover relay per door. It features independent controls for each door, including adjustable door-open times (0 - 62 seconds) and alarm delays (0 - 45 seconds) managed via precise DIP switches.

Installation is straightforward thanks to pluggable terminal blocks and supplied nylon stick-on mountings. For larger security setups, the system is fully expandable to an infinite number of doors simply by cross-wiring additional IB1 boards together.

## Technical Specifications

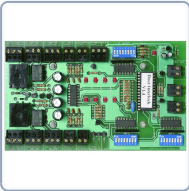
- **Brand:** Alpro
- **Manufacturer Reference:** IB1-PCB
- **Input Voltage:** 12/24V DC

- **Outputs:** 1 Output Volt-Free NO & NC Per Door
- **Rating:** 5 Amp (Double Pole)
- **Time Delay:** 0 - 62 seconds adjustable & 0 - 45 seconds adjustable
- **Width:** 101mm
- **Depth:** 30mm
- **Weight:** 350g
- **Pack Quantity:** 1

## Key Features

- **Microprocessor Controlled Logic:** Ensures reliable, true interlocking where only one door can be operated at a time.
- **Fully Expandable:** Easily scale your system to support an infinite number of doors by cross-wiring additional IB1 boards.
- **Independent Door Controls:** Separate settings for each door, including individual timers and override inputs.
- **On-Board Diagnostics:** Features 9 engineering LEDs for rapid diagnostic testing and troubleshooting.
- **Simple Installation:** Supplied with pluggable terminal blocks and nylon stick-on mountings for flexible mounting.
- **Dual Alarm Output:** Selectable door forced or door left open alarm outputs to enhance site security.

**Variant Specifications And Pricing**

Image	Part Number	Ex VAT	Inc VAT	Attributes / Specs
	L13896	£505.34	£606.41	<p><b>Barcode:</b> 5055120686752  <b>Brand:</b> Alpro  <b>Depth:</b> 30mm  <b>Input Voltage:</b> 12/24V DC  <b>Manufacturer Reference:</b> IB1-PCB  <b>Outputs:</b> 1 Output V Free NO &amp; NC Per Door  <b>Pack Quantity:</b> 1  <b>Rating:</b> 5 Amp (Double Pole)  <b>Time Delay:</b> 0 - 62 sec adj. &amp; 0 - 45 sec adj.  <b>Weight:</b> 350g  <b>Width:</b> 10.1cm</p>

## Brand Profile

Alpro



**Alpro (Alpro Architectural Hardware)** is a UK supplier of **architectural door hardware and access-control components**, focused heavily on the **commercial aluminium door (OEM) market** and the wider **access control** environment. It operates as a **division of IEC Limited**, an **independent, family-owned** company founded in **1938** to supply quality mechanical components.

Alpro's catalogue spans both **mechanical** and **electro-mechanical** products: contemporary **pull handles, lever/paddle handles, deadlocks/deadlatches, cylinders, transom door closers**, and hardware like **flushbolts** and **armoured strikes**, alongside access-control staples such as **electric strikes, deadlocking/solenoid bolts, shearlocks, cabinet locks**, and **IP-rated keypads and exit switches**.

The company also highlights **BS EN ISO 9001:2015 approval**, technical support, CAD/design capability, and a stock-led operation aimed at quick dispatch - positioning Alpro as a practical "solve the door problem" brand for installers and fabricators rather than a consumer retail name.