

# ALPRO AL110 Series Extension Lip

Alpro · Alpro · 2 variants

PRICING

**From £50.39 ex VAT**

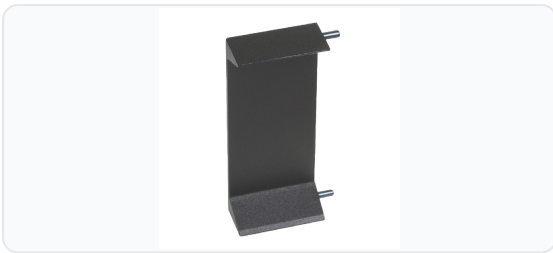
£60.47 inc VAT

2 variants available

VAT 20.00%

Range: £50.39 - £62.99 ex VAT

## Product Imagery



## Specification Summary

Brand Alpro

Product type Alpro

## Product Description

The Alpro AL110 Series Extension Lip is designed to facilitate the installation of Alpro AL110 series electric strikes on door frames of varying thicknesses. Ideal for deeper frames or recessed door profiles, this extension lip ensures proper alignment between the electric strike and the latch bolt, maintaining the security and functionality of your door entry system.

These extension lips are suitable for use in both timber and metal door applications. They are available in multiple widths (including 25mm and 50mm) and with different barcodes. Please select your required width and barcode from the options below to ensure the perfect fit for your installation.


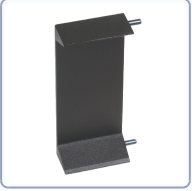
## Technical Specifications

- **Brand:** Alpro
- **Compatibility:** Designed to suit Alpro AL110 series electric strikes
- **Available Widths:** 25mm and 50mm (please select from the options below)
- **Weight:** 40g
- **Barcodes:** Multiple options available (please select from the options below)

## Key Features

- **Versatile Installation:** Enables the fitting of AL110 series electric strikes on different thickness door frames and recessed profiles.
- **Improved Alignment:** Ensures correct alignment between the strike and the latch bolt for reliable operation.
- **Multiple Options:** Available in different widths and barcodes to suit your specific installation requirements - please choose from the options below.
- **Robust Construction:** High-quality design from Alpro, suitable for both timber and metal door applications.

### Variant Specifications And Pricing

| Image                                                                             | Part Number | Ex VAT | Inc VAT | Attributes / Specs                                                                                                                                                                              |
|-----------------------------------------------------------------------------------|-------------|--------|---------|-------------------------------------------------------------------------------------------------------------------------------------------------------------------------------------------------|
|  | L18079      | £50.39 | £60.47  | <b>Barcode:</b> 5055120698892<br><b>Brand:</b> Alpro<br><b>Manufacturer Reference:</b> ALEX1125<br><b>Suits Product:</b> To Suit Alpro AL110 Series<br><b>Weight:</b> 40g<br><b>Width:</b> 25mm |
|  | L18080      | £62.99 | £75.59  | <b>Barcode:</b> 5055120698908<br><b>Brand:</b> Alpro<br><b>Manufacturer Reference:</b> ALEX1125<br><b>Suits Product:</b> To Suit Alpro AL110 Series<br><b>Weight:</b> 40g<br><b>Width:</b> 50mm |

## Brand Profile

Alpro



**Alpro (Alpro Architectural Hardware)** is a UK supplier of **architectural door hardware and access-control components**, focused heavily on the **commercial aluminium door (OEM) market** and the wider **access control** environment. It operates as a **division of IEC Limited**, an **independent, family-owned** company founded in **1938** to supply quality mechanical components.

Alpro's catalogue spans both **mechanical** and **electro-mechanical** products: contemporary **pull handles**, **lever/paddle handles**, **deadlocks/deadlatches**, **cylinders**, **transom door closers**, and hardware like **flushbolts** and **armoured strikes**, alongside access-control staples such as **electric strikes**, **deadlocking/solenoid bolts**, **shearlocks**, **cabinet locks**, and **IP-rated keypads and exit switches**.

The company also highlights **BS EN ISO 9001:2015 approval**, technical support, CAD/design capability, and a stock-led operation aimed at quick dispatch - positioning Alpro as a practical "solve the door problem" brand for installers and fabricators rather than a consumer retail name.